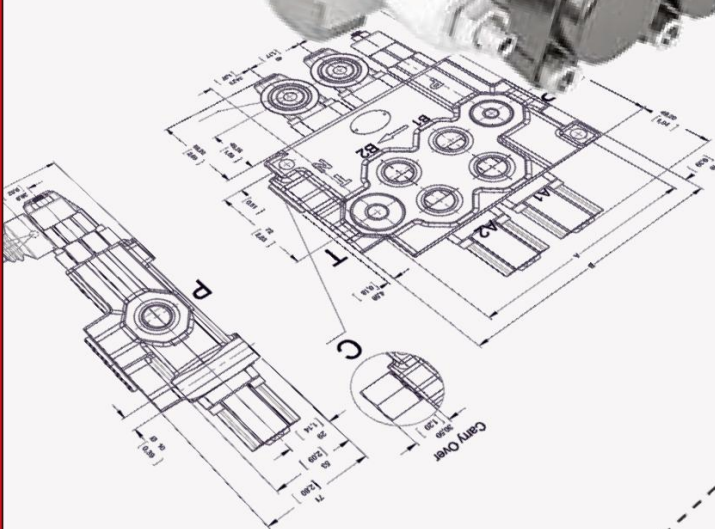
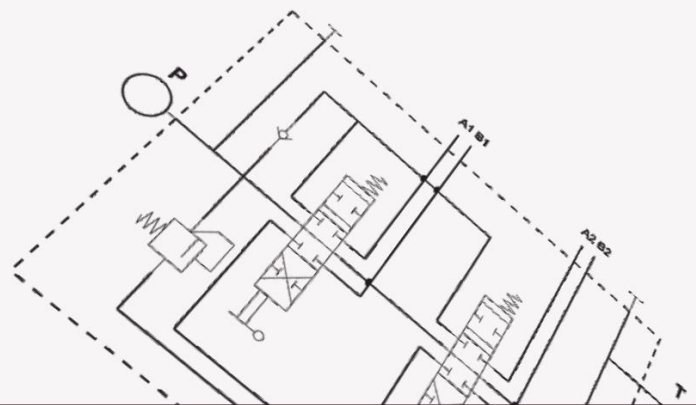


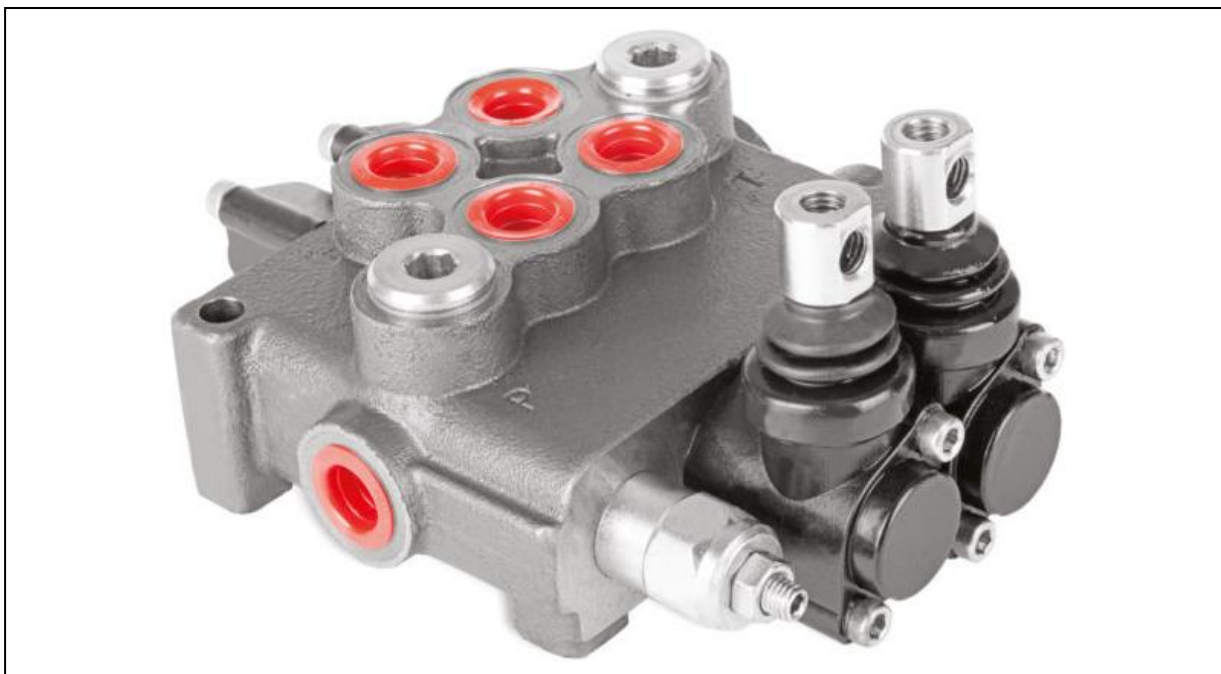
DETAILED TECHNICAL CATALOGUE

MONOBLOCK DIRECTIONAL
CONTROL VALVES



GM-MS45





Contents

<i>Working Conditions</i> _____	3
<i>Dimensional Data</i> _____	4
<i>Hydraulic Circuit</i> _____	5
<i>Performance Data And Curve</i> _____	6
<i>Inlet Relief Options</i> _____	7
<i>Ordering Codes</i> _____	8
<i>Spool Options</i> _____	10
<i>Spool Positioners – Side of Return</i> _____	13
<i>Spool Positioners – Side of Lever Control</i> _____	15
<i>Spool Positioners – Side of Lever Control</i> _____	16
<i>Spool Positioners – Side of Lever Control</i> _____	17
<i>Outlet Port Options</i> _____	18
<i>Outlet Port Options</i> _____	19
<i>Installation and Maintenance</i> _____	20
<i>Technical Data</i> _____	21

Additional Informations

Note:This catalog shows the product in the most standard configurations. For Other Configurations, more detailed information or special request, Please contact Customer Service Dpt.

Warning! :All specifications of this catalog refer to the standard product at this date (12/2014) . GEMMA, oriented to a continuous improvement, reserves the right to discontinue, modify or revise the specifications, without notice.

GEMMA IS NOT RESPONSIBLE FOR ANY DAMAGE CAUSED BY AN INCORRECT USE OF THE PRODUCT.

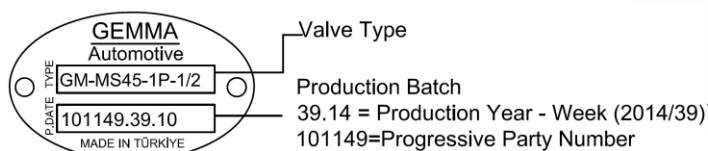
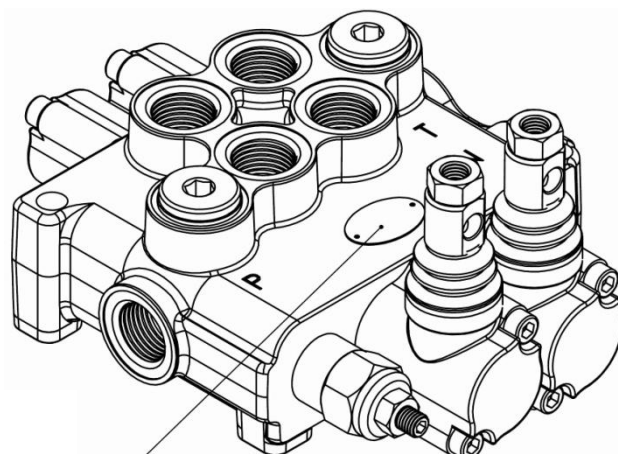
Working Conditions

Nominal Flow Rating / Displacement	45 l/min	12 U.S.G.P.M
Maximum Working Pressure (Parallel Circuit)	315 Bar	4600 PSI
(Series Circuit)	250 Bar	3600 PSI
Max. Back Pressure	25 Bar	360 PSI
Oil Temperature with NBR Seals	-20 to 80 C°	-4 to 176 F°
with FPM (Viton) Seals	-20 to 100 C°	-4 to 212 F°
Oil Viskosity – Operating Range	From 10 to 75 mm2/s	From 10 to 75 cSt
Minumum / Maximum	10 / 400 mm2/s	10 / 400 cSt
Oil Filtration	≤30 μ	
Ambiant Temperature Range	-35 to 60 C°	-31 to 140 F°
Number Of Spools	1 to 7	
Internal Leakage (at 100 bar (1450 PSI), 40C° (110 F°), 46 cSt – A(B)—T)	3 cm3/min	0,18 in3/min
Max. Level Of Contamination	19/16 - ISO 4406	

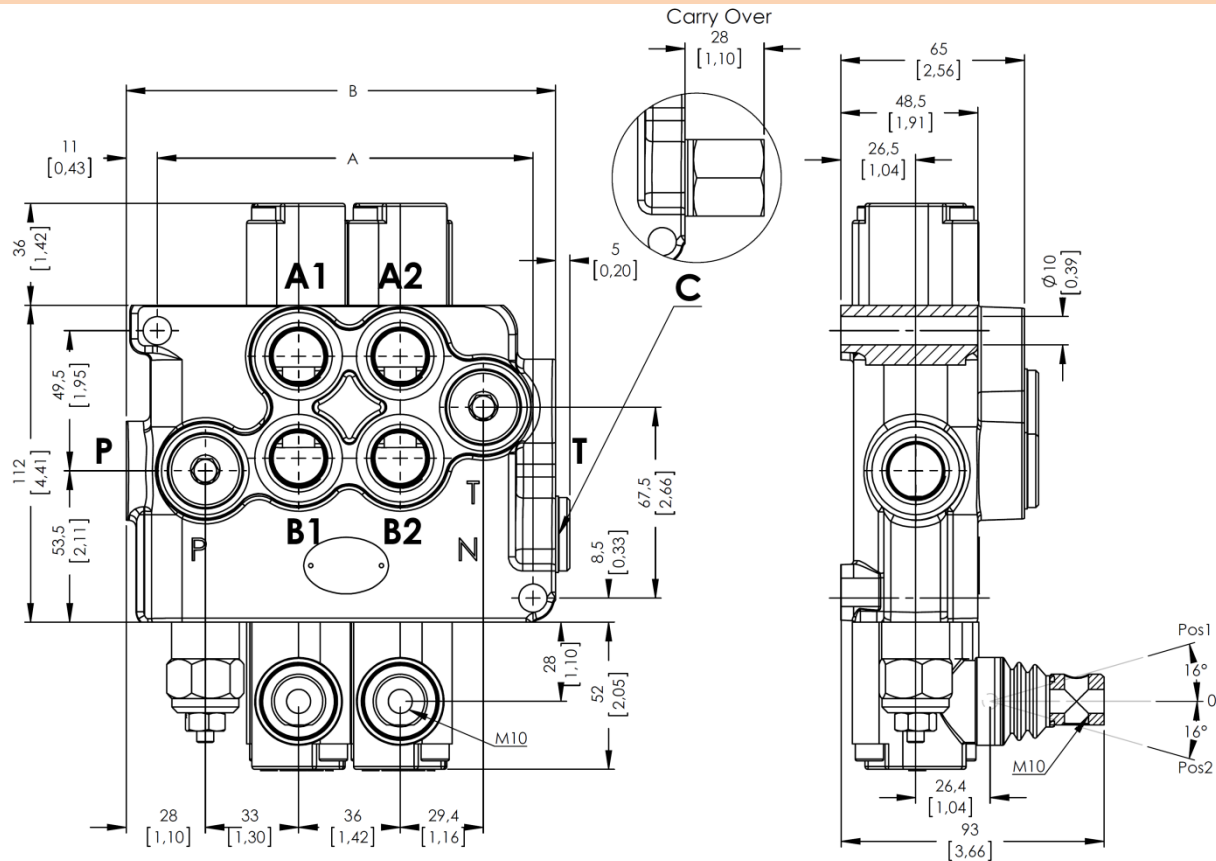
Not: This catalogue shows technical specifications measured with mineral oil of 46 mm2/s-46 cSt viscosity at 40 C° temparture.

Features

- Simple, compact and heavy duty designed monoblock valves from 1 to 7 sections for open and closed center hydraulic systems.
- Fitted with a main pressure relief valve and a load check valve.
- Optionaly Carry-Over port only parallel circuit.
- Interchangeable spool diameter is 16 mm – 0,63 in.
- Available manual, pneumatic, hydraulic and electro-pneumatic spool control kits.



Dimensional Data



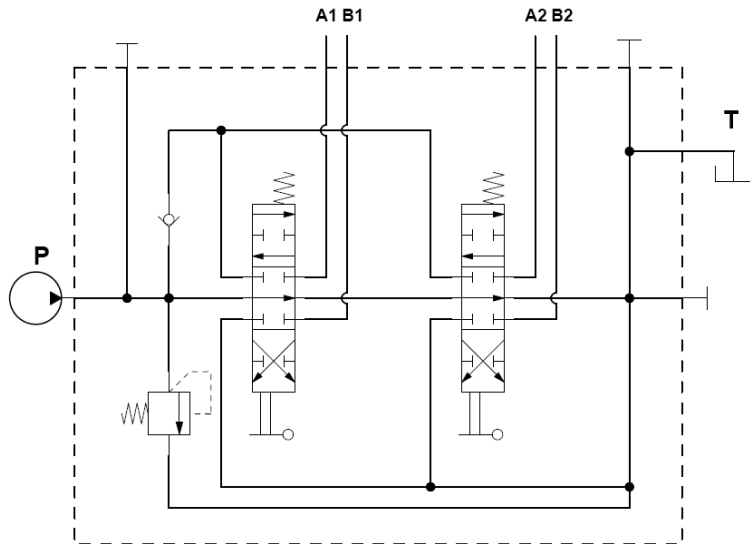
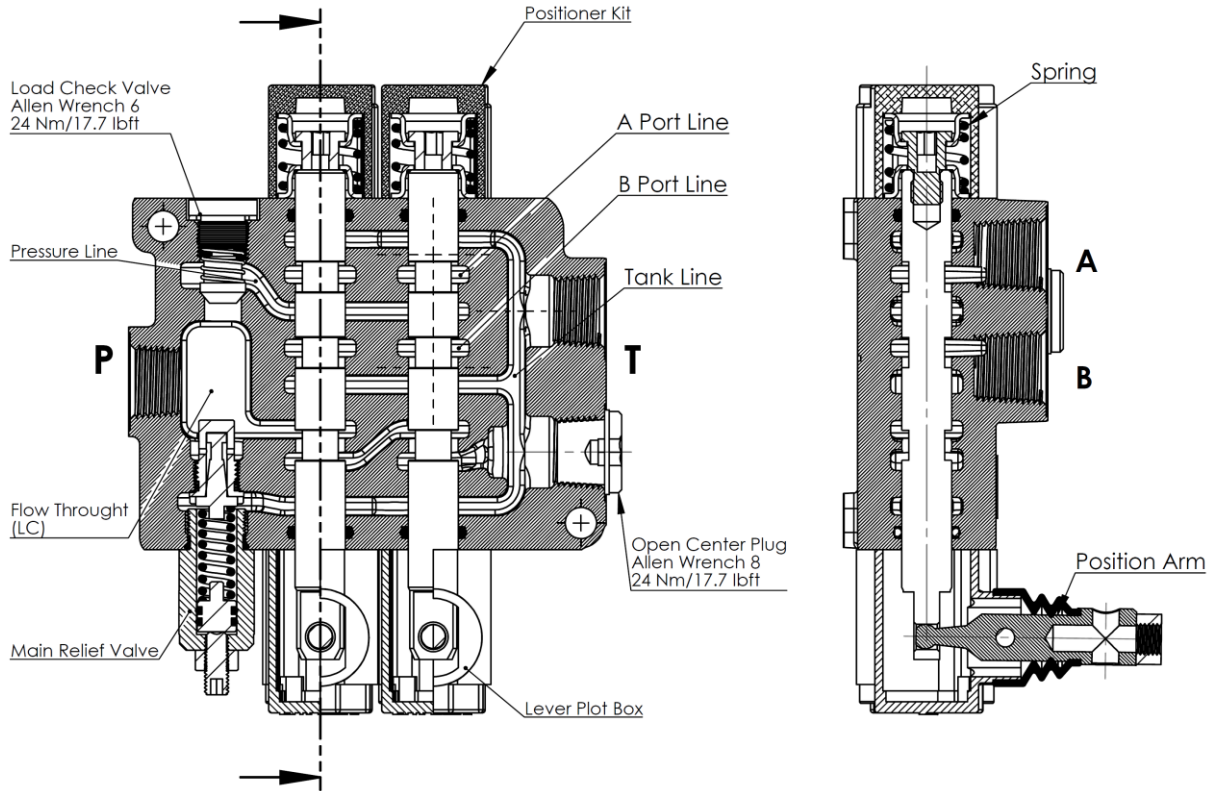
TYPE	A		B		Weight	
	mm	in	mm	in	Kg	lb
GM -MS45-1P	97	4,25	116	4,56	4,00	8,18
GM -MS45-2P	133	5,23	152	5,98	6,00	13,23
GM -MS45-3P	169	6,65	188	7,40	7,40	16,31
GM -MS45-4P	205	8,07	224	8,82	9,00	19,84
GM -MS45-5P	241	9,49	260	10,23	10,60	23,37
GM -MS45-6P	277	10,90	296	11,65	12,30	27,12
GM -MS45-7P	313	12,32	332	13,07	14,00	30,86

Standard Threads

PORT	BSP (Iso 228)		UN-UNF (Iso 11926-1)	Metric (Iso 262)
	3/8" Series	1/2" Series		
P Inlet	G 3/8	G 1/2	3/4-16 UNF	M18x1.5
A-B Ports	G 3/8	G 1/2	9/16-18 UNF	M18x1.5
T Outlet	G 1/2	G 1/2	3/4-16 UNF	M18x1.5
Pneumatic	G 1/4	G 1/4	NPTF 1/8 - 27	NPTF 1/8 - 27
Carry-Over	G 1/2	G 1/2	3/4-16 UNF	G 1/2

Hydraulic Circuit

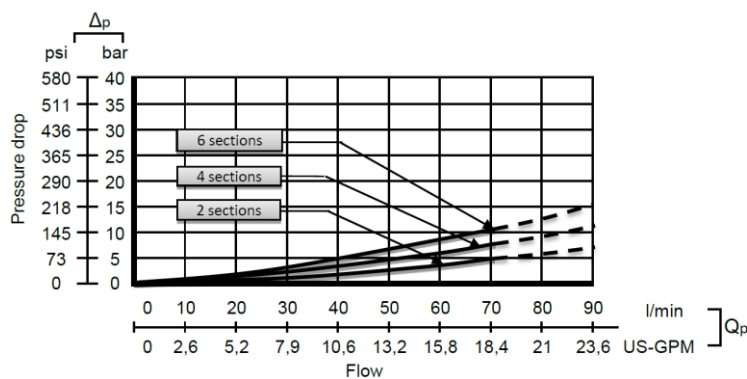
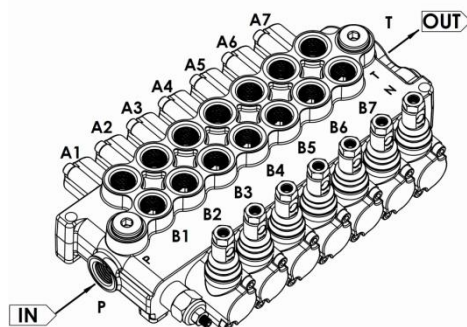
Parallel - Standard Configurations With Side Inlet And Outlet Open Center



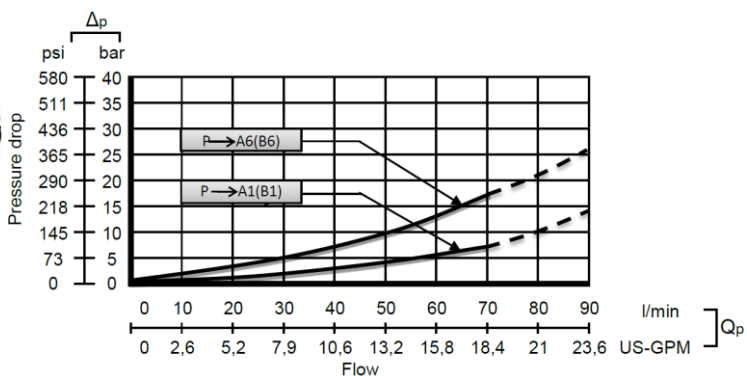
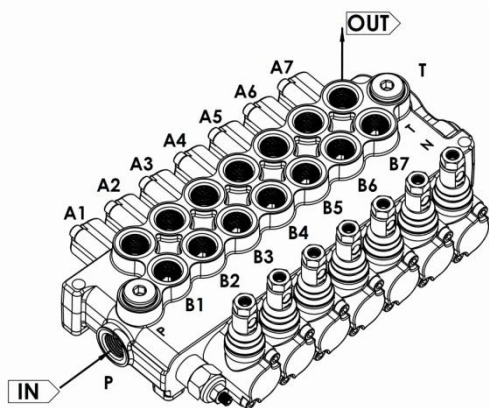
Code:GM - MS45-2P / SMR2-120 / 1A-SR-STL/1A-SR-STL/PA1/SGT

Performance Data And Curve

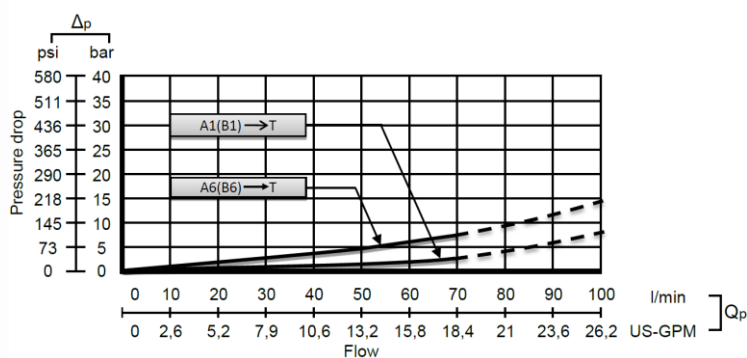
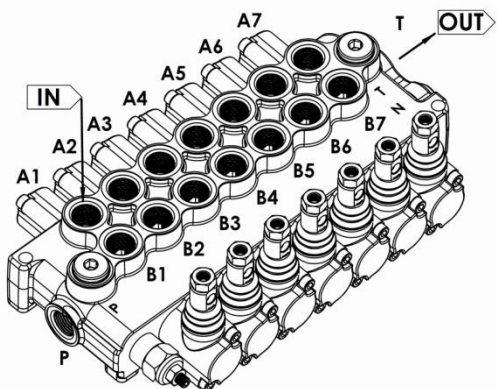
Open Center - Pressure Drop (P-T)



Inlet to Work Port - Pressure Drop (P-A/B)



Work Port to Outlet - Pressure Drop (A/B-T)



Note: Measured and chart value with spool type 1A.

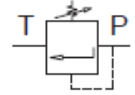
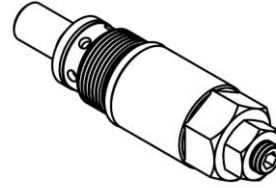
Inlet Relief Options

Direct Pressure Relief Valve

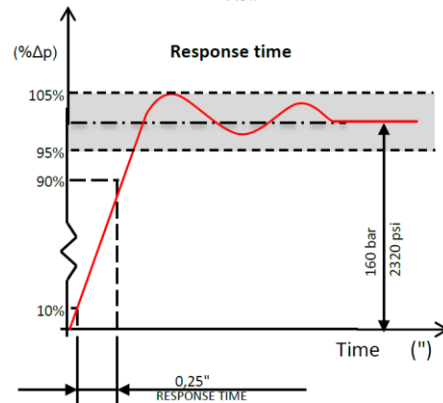
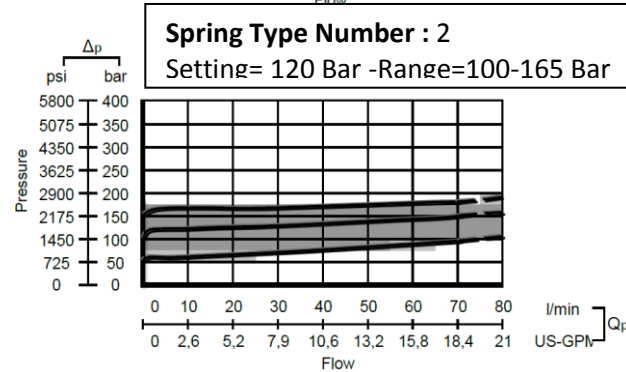
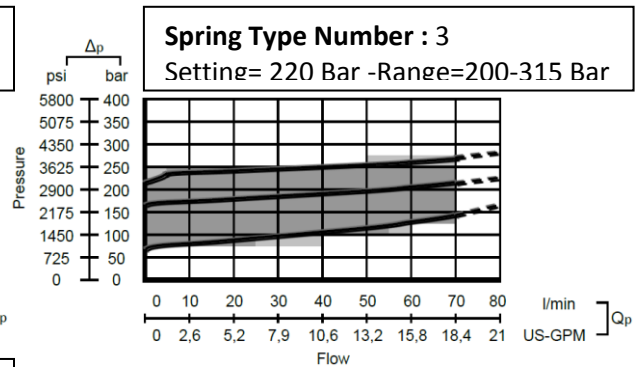
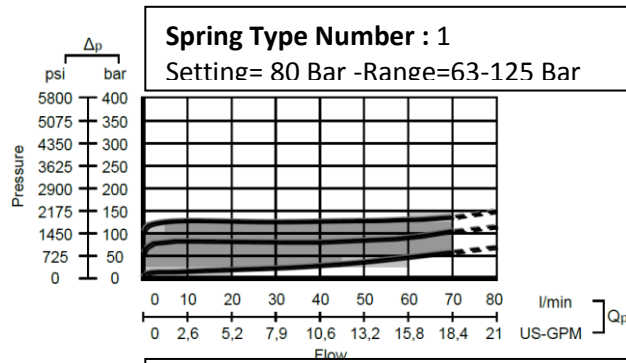
Code: _____

SMR2 – 120

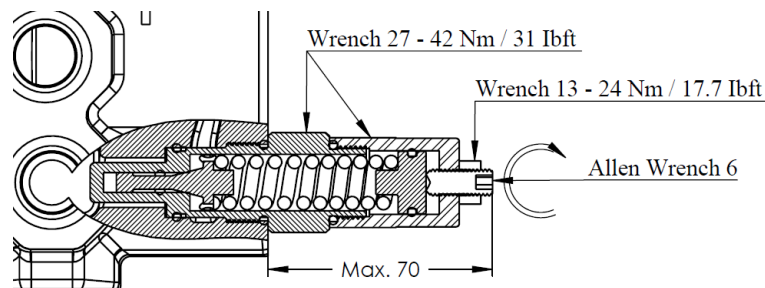
- Pressure Setting Bar in (Standard 120 bar)
- Standard Main Relief Spring Type -2



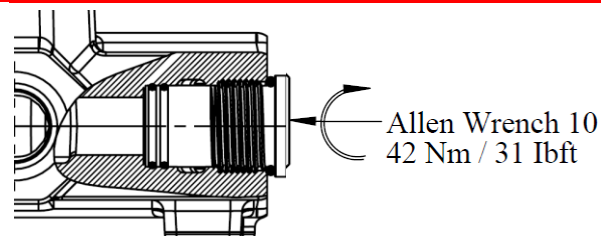
Performance Data: _____



Adjustment Type on Valve: _____



Relief Blanking Plug - WM



Ordering Codes

Order example

GM MS45-1P /SMR2-120 /1A-SR-STL/ 1A-45P-STL/ CO-PL1-P1 / SGT

1

2

3

4

5

6

7

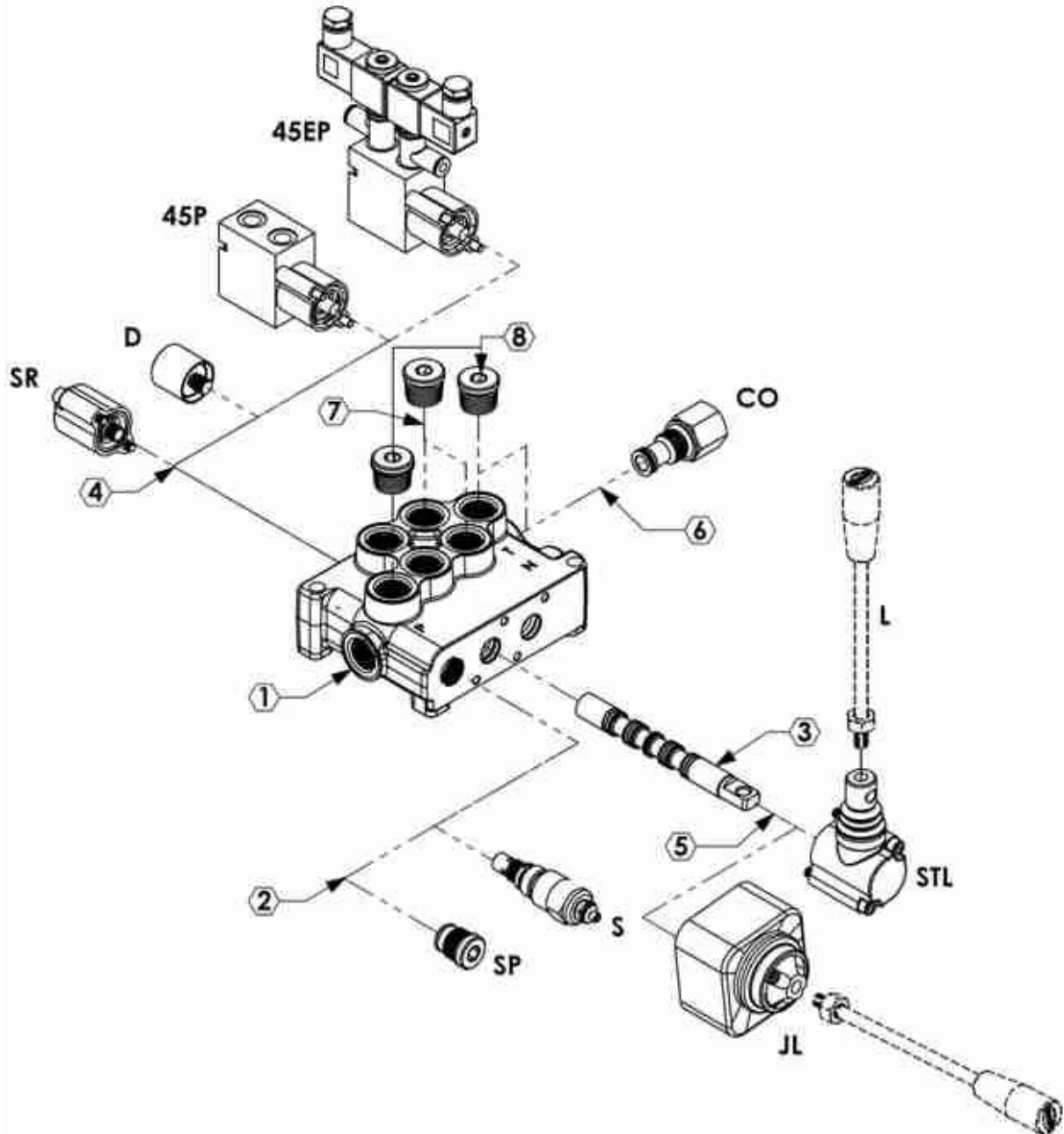
8

9

1 st Section

Following Section

Output Section



Ordering Codes

1-Valve Type and Body

M45 =Valve Type - (MS) - Monoblok
(45) - Max. Flow Rate

1P =Body for 1 Section - (1BMS145100)
2P =Body for 2 Sections - (1BMS245100)
3P =Body for 3 Sections - (1BMS345100)
4P =Body for 4 Sections - (1BMS445100)
5P =Body for 5 Sections - (1BMS545100)
6P =Body for 6 Sections - (1BMS645100)

2-Pressure Relief Options

SMR = Standard direct pressure relief valve

SMR1-080 – (2SMR145080)–Range 0-80 bar
Setting 80 bar

SMR2-120 – (2SMR245120)–Range 60-200 bar
Setting 120 bar

SMR3-220 – (2SMR345220)–Range 160-315 bar
Setting 220 bar

SP =Standard relief plug – (2SP045100)

3-Spool Options

1A -(3SMS145110) – 3 Positions ,Double acting
2A -(3SMS145120) – 3 Positions ,Double acting
A to tank B Blocked

3A -(3SMS145130) – 3 Positions ,Double acting
B to tank A blocked

4A -(3SMS145140) – 3 Positions ,Double acting
A and B tank

5A -(3SMS145150) – 3 Positions ,Single acting
on A (A to tank)

6A -(3SMS145160) – 3 Positions ,Single acting
on B (B to tank)

4- Spool Positioners

SR=Spring Return in neutral position –
(4SR045100)

D =Detent in position 1, neutral and 2 -
(4D045100)

45P=ON/OFF Pneumatic – (445P045100)

45EP=12 VDC ON/OFF electro-pneumatic –
(445EP045112)

24 VDC ON/OFF electro-pneumatic –
(445EP045124)

5-Lever Options

STL=Standard Lever –(5STL045100)

JL=Joystick lever for two sections operation
- (5JL 080100)

6- Output Options

PA1(T) =G1/2" Top output plug-
(6PL1040112)

PA1(S) =G1/2" Side output plug-
(6PL1040112)

CO =G1/2" Carry-Over Connector –
(6CO045100)

7-Ports Plug Options "If Required"

PL1(5A) =Plug for single action spool for 5A
G1/2 –(6PL1040112)

PL1(6A) =Plug for single action spool for 6A
G1/2 –(6PL1040112)

PL2(5A)=Plug for single action spool for 5A
G3/8- (7PL2045138)

PL2(6A)=Plug for single action spool for 6A
G3/8- (7PL2045138)

*Page 13 for detail spool options.

8- Ports Input Plug Options

PI1(T) = G1/2 Top input – (6PL1040112)

PI1(S) = G1/2 Side input – (6PL1040112)

PI2(T) = G3/8 Top input – (7PL2045138)

PI2(S) = G3/8 Side input – (7PL2045138)

9- Ports Thread Options

SGT1 =1/2" Series Port Options - (9P045112)

SGT2 =3/8" Series Port Options - (9P045138)

UNF =UNF Series Port Options - (9U045138)

M =Metric Series Port Options -
(9M045138)

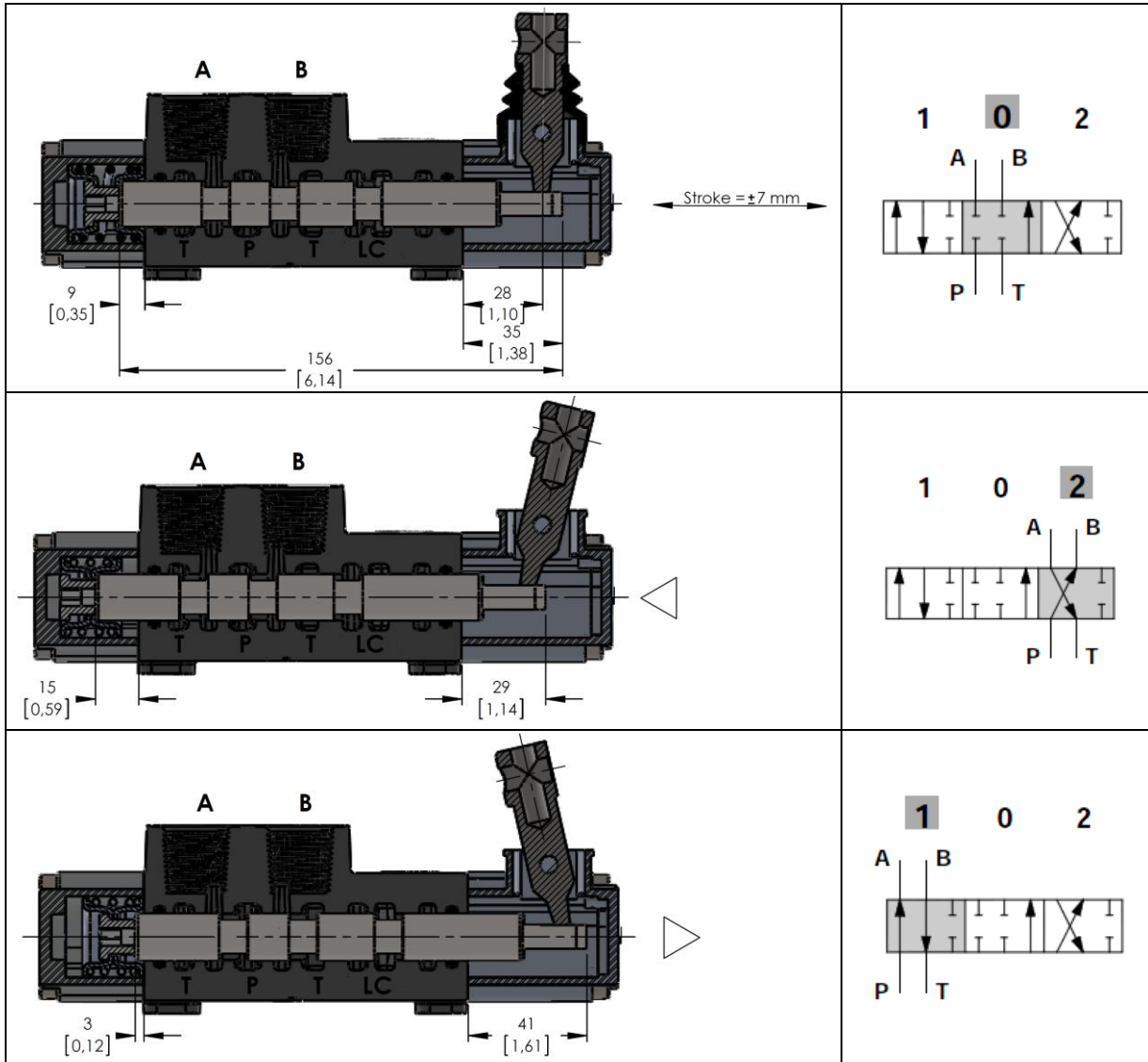
*Page 4 for detail port information.

HandLever

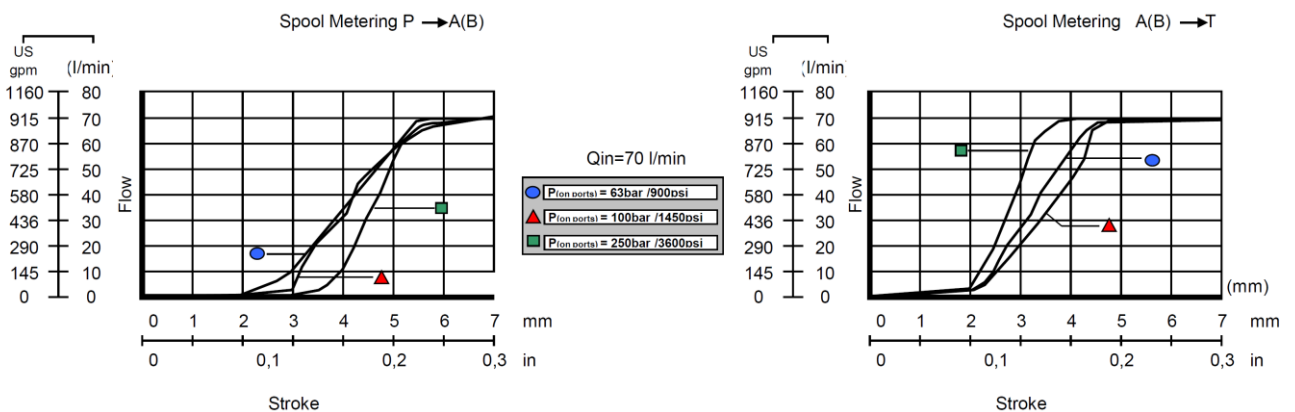
L =Standard HandLever (L=120mmxM10) -
(7L040100)

Spool Options

Spool Type - 1A

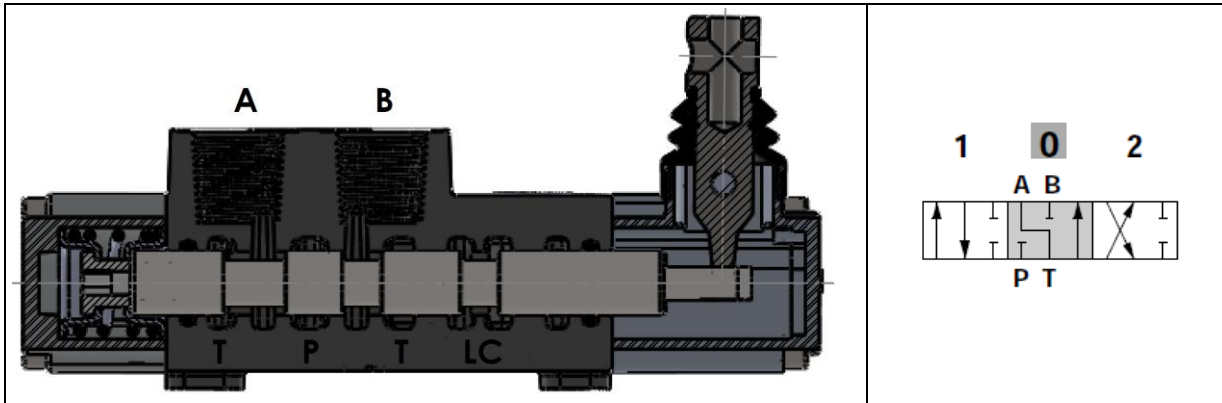


Performance Curve And Data:

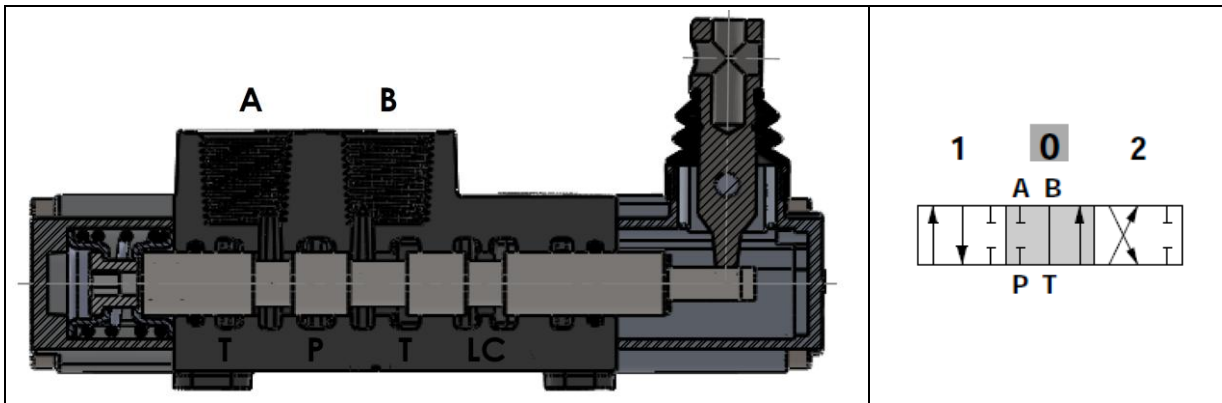


Spool Options

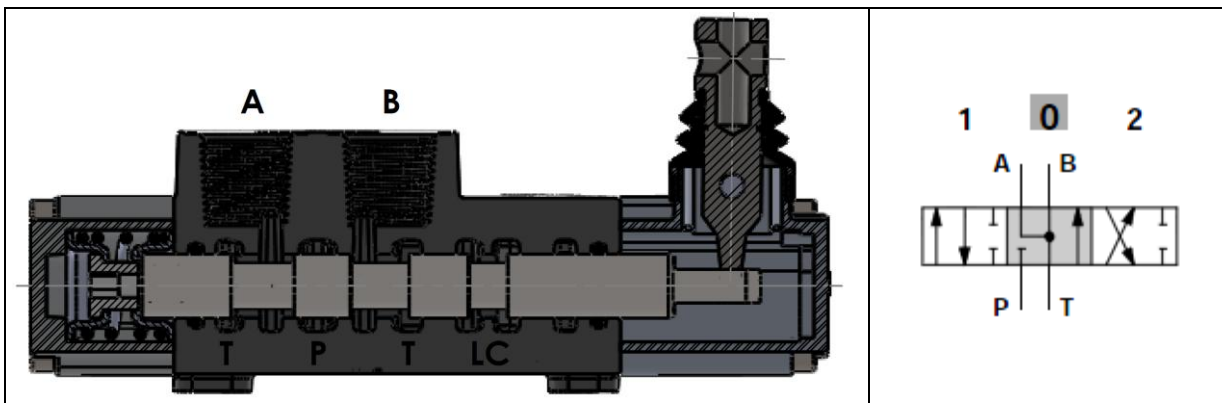
Spool Type - 2A



Spool Type - 3A

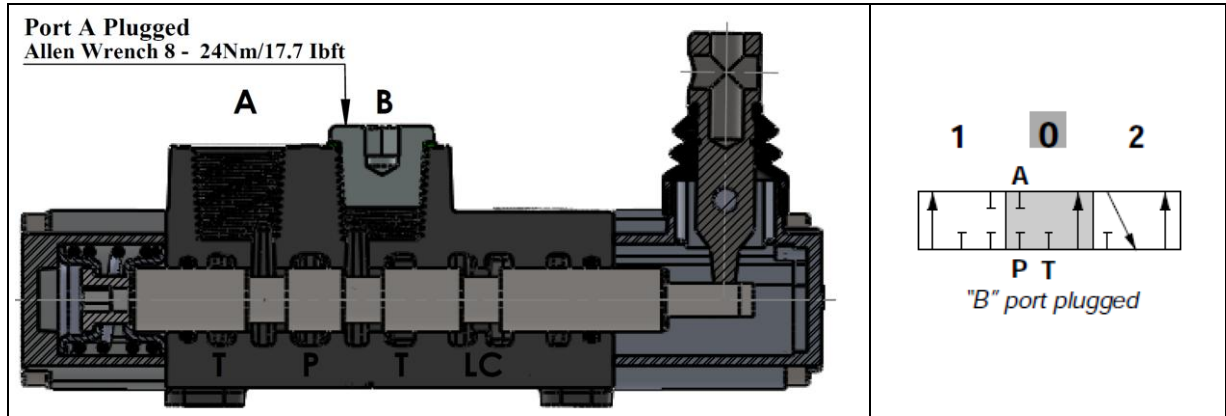


Spool Type - 4A

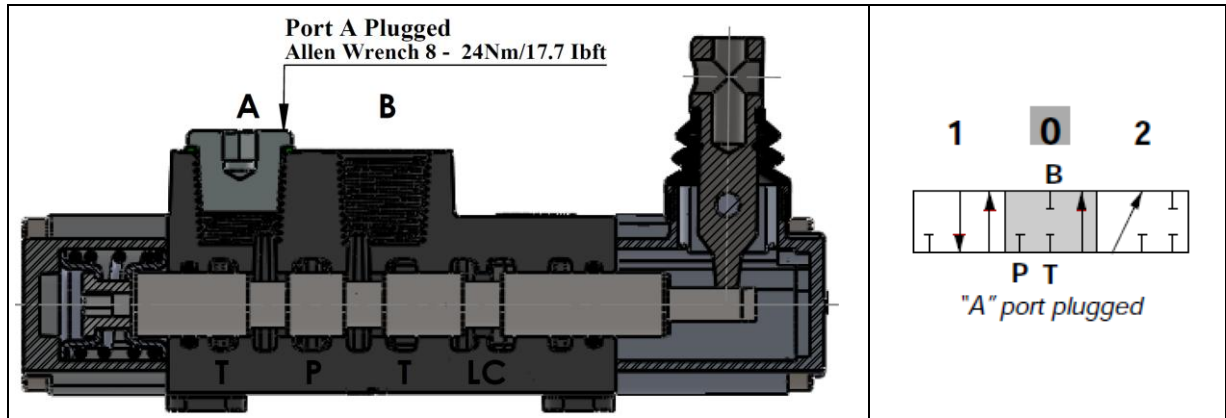


Spool Options

Spool Type - 5A



Spool Type - 6A



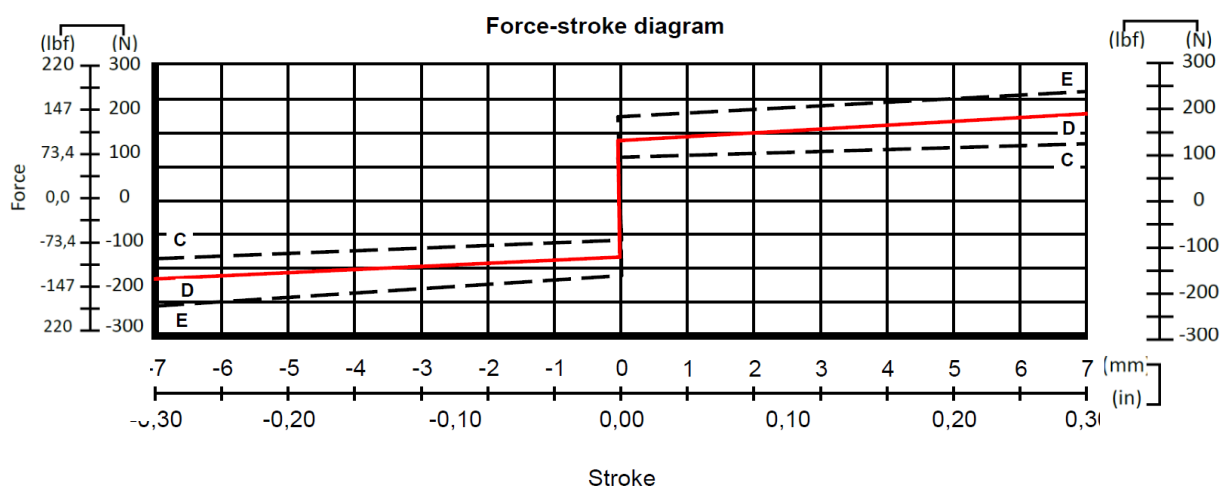
Spool Positioners – Side of Return

With Spring Return in Neutral Position

Kit No: SR	
Sectional Appearance	Diagram

With Detent

Kit No: D	
Sectional Appearance	Diagram



Spool Positioners – Side of Return

ON/OFF Pneumatic Control

Kit No: 80P	
Sectional Appearance	Diagram
Operatig Features Pilot Pressure: 6 Bar (Max. 10) / 87 Psi (Max. 145)	

ON/OFF Electro-Pneumatic Control

Kit No: 80EP	
Sectional Appearance	Diagram
Operatig Features Pilot Pressure: 6 Bar (Max. 10) / 87 Psi (Max. 145)	
Selonoid Operating Features Nominal Voltage.....: 12VDC / 24 VDC Power Rating.....: 6 W	

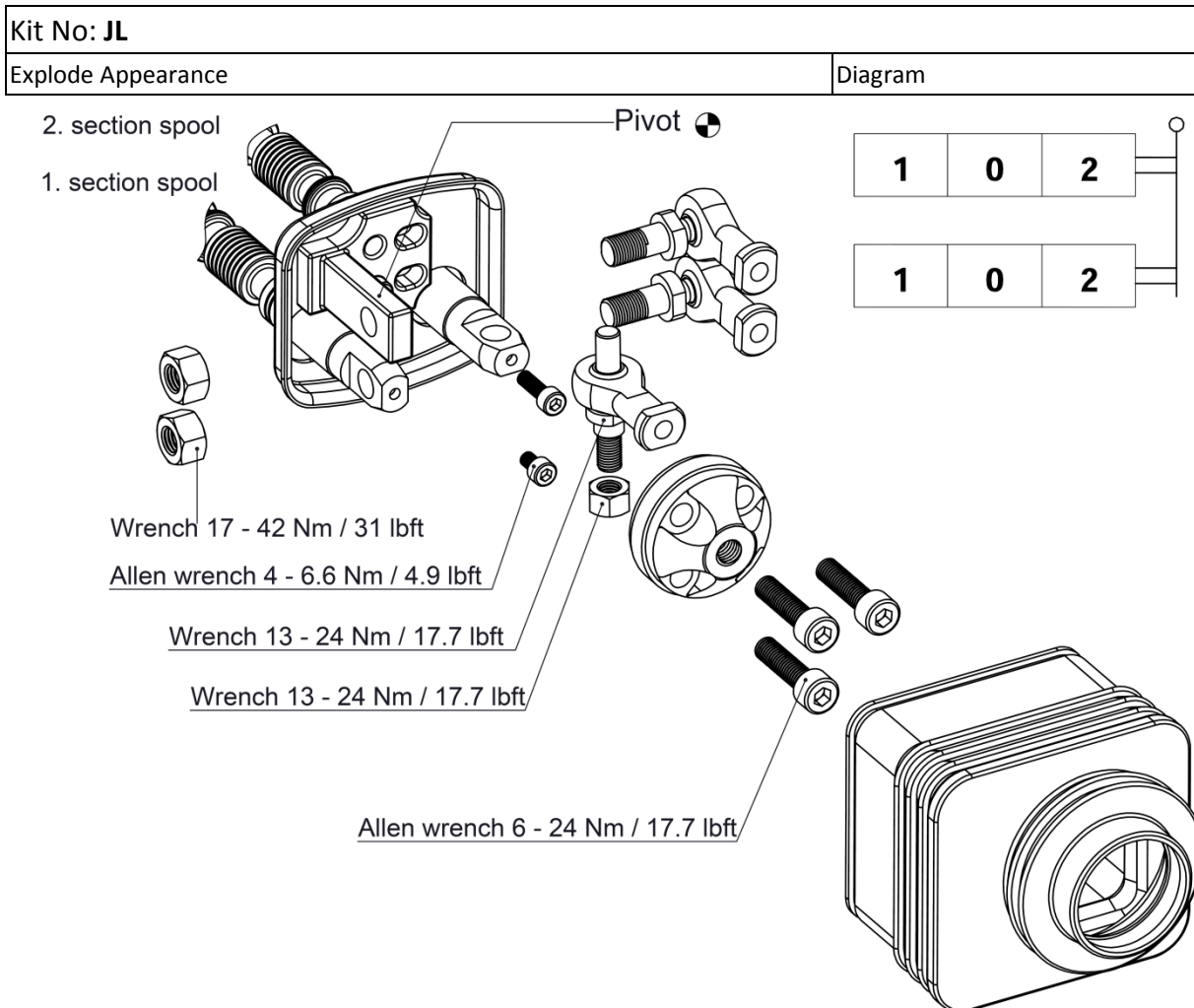
Spool Positioners – Side of Lever Control

Lever Controls

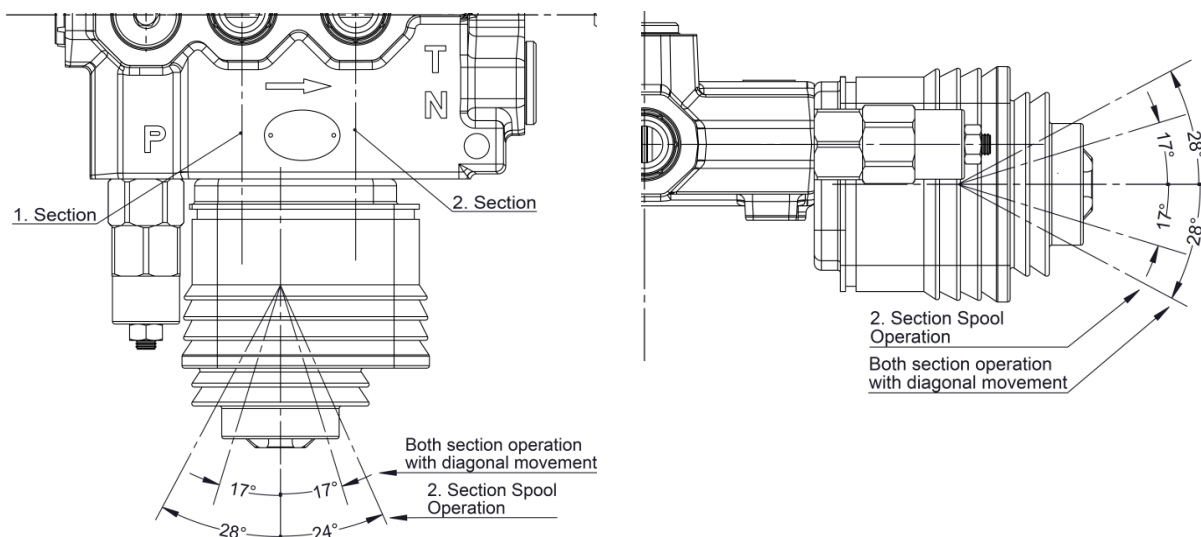
<p>Kit No: STL - L0</p>	
<p>Sectional Appearance</p>	<p>Diagram</p>
<p>Kit No: STL - L180</p>	
<p>Sectional Appearance</p>	<p>Diagram</p>
<p>Note: Aluminium with protection arm lever pivot box, it can be rotated 180°.</p>	

Spool Positioners – Side of Lever Control

Lever Controls - Joystick



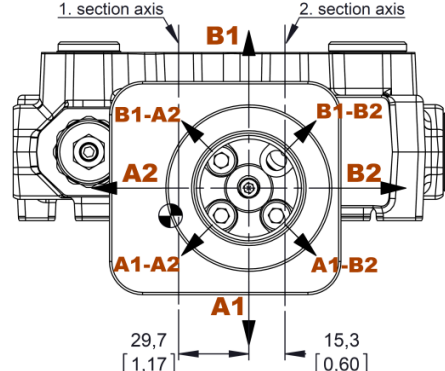
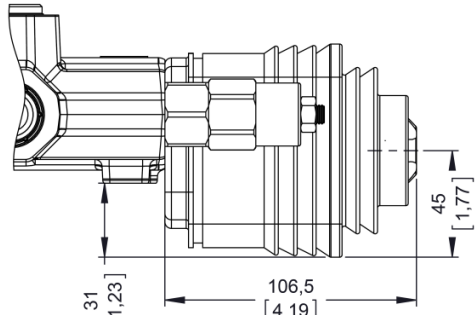
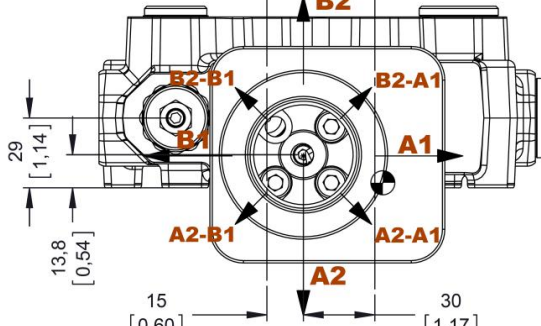
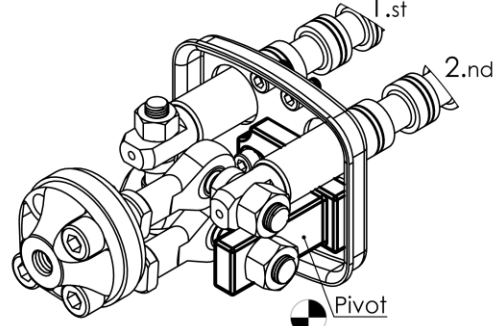
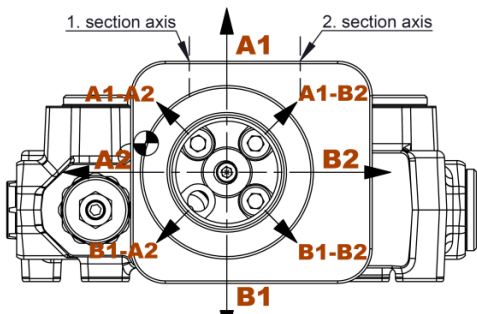
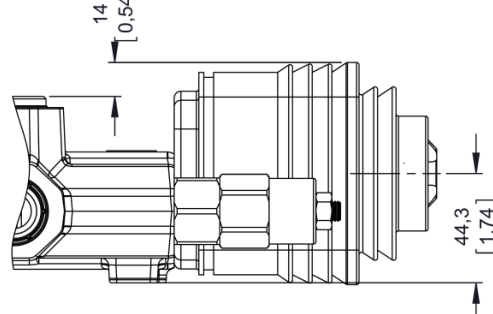
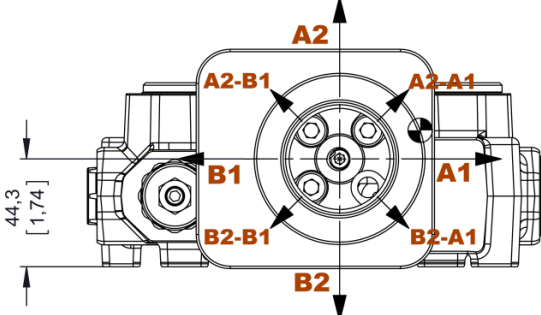
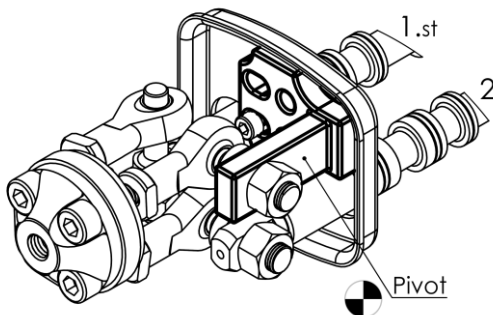
Operation Angle:



Spool Positioners – Side of Lever Control

Lever Controls - Joystick

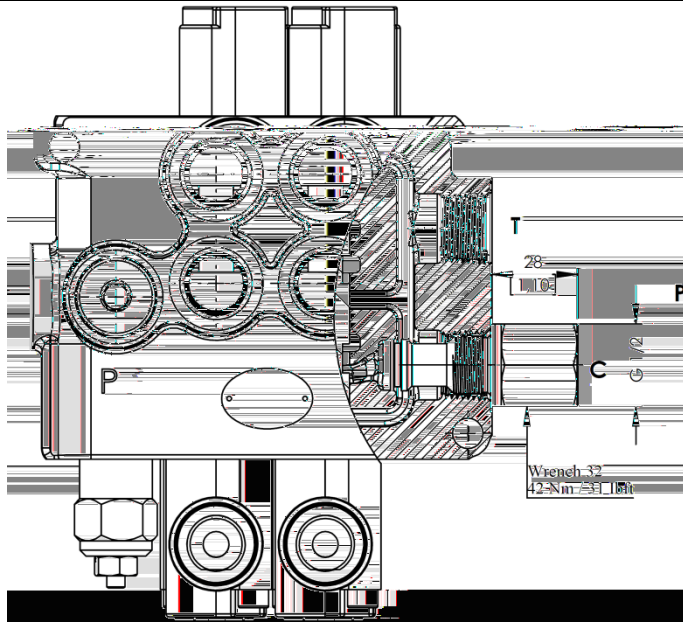
Dimensions and movement scene

<p>Type No:JL1</p>	<p>Execution: Pivod placed down on the Left</p>
 <p>1. section axis 2. section axis</p> <p>B1, B1-A2, B1-B2, A2, B2, A1-A2, A1, A1-B2</p> <p>29,7 [1,17] 15,3 [0,60]</p>	 <p>31 [1,23] 106,5 [4,19] 45 [1,77]</p>
<p>Type No:JL2</p>	<p>Execution: Pivod placed down on the right</p>
 <p>B2, B2-B1, B2-A1, B1, A1, A2-B1, A2, A2-A1</p> <p>29 [1,14] 13,8 [0,54] 15 [0,60] 30 [1,17]</p>	 <p>1.st 2.nd Pivot</p>
<p>Type No:JL3</p>	<p>Execution: Pivod placed above on the Left</p>
 <p>1. section axis 2. section axis</p> <p>A1, A1-A2, A1-B2, A2, B2, B1-A2, B1, B1-B2</p>	 <p>14 [0,54] 44,3 [1,74]</p>
<p>Type No:JL4</p>	<p>Execution: Pivod placed above on the right</p>
 <p>A2, A2-B1, A2-A1, B1, A1, B2-B1, B2, B2-A1</p> <p>44,3 [1,74]</p>	 <p>1.st 2.nd Pivot</p>

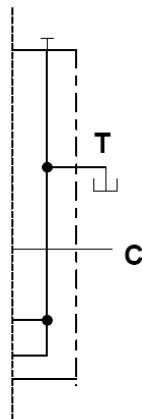
Outlet Port Options

Carry - Over Connection

Kit No: CO

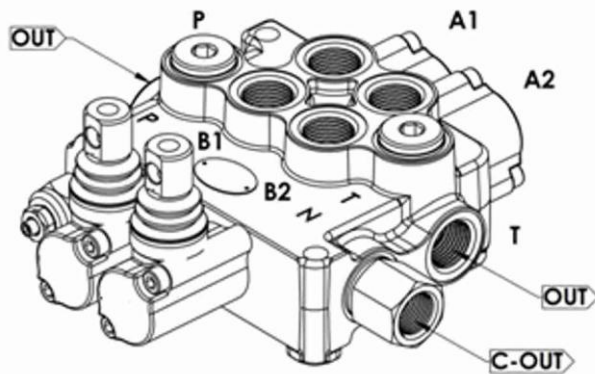


Sectional Appearance



Hydraulic Circuit

Code:GM - MS45-2P / SMR2-120 / 1A-SR-STL/1A-SR-STL/CO-PA1/SGT

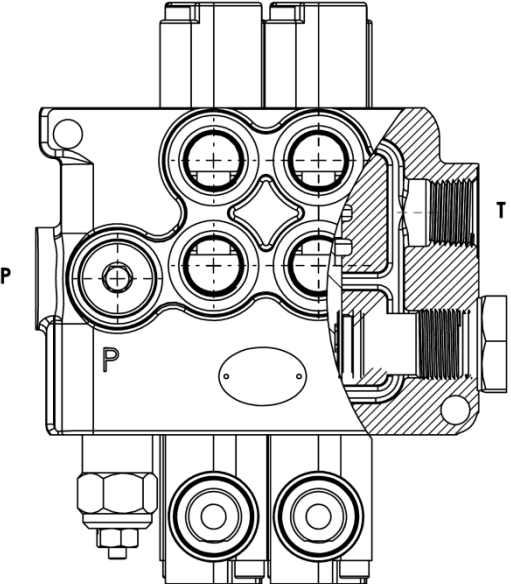
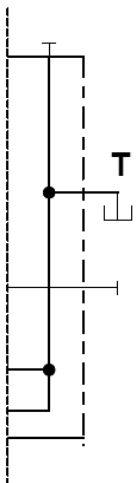


Direction of Port Connected

SGT : See page 5 for Standard center

Outlet Port Options

Closed Center

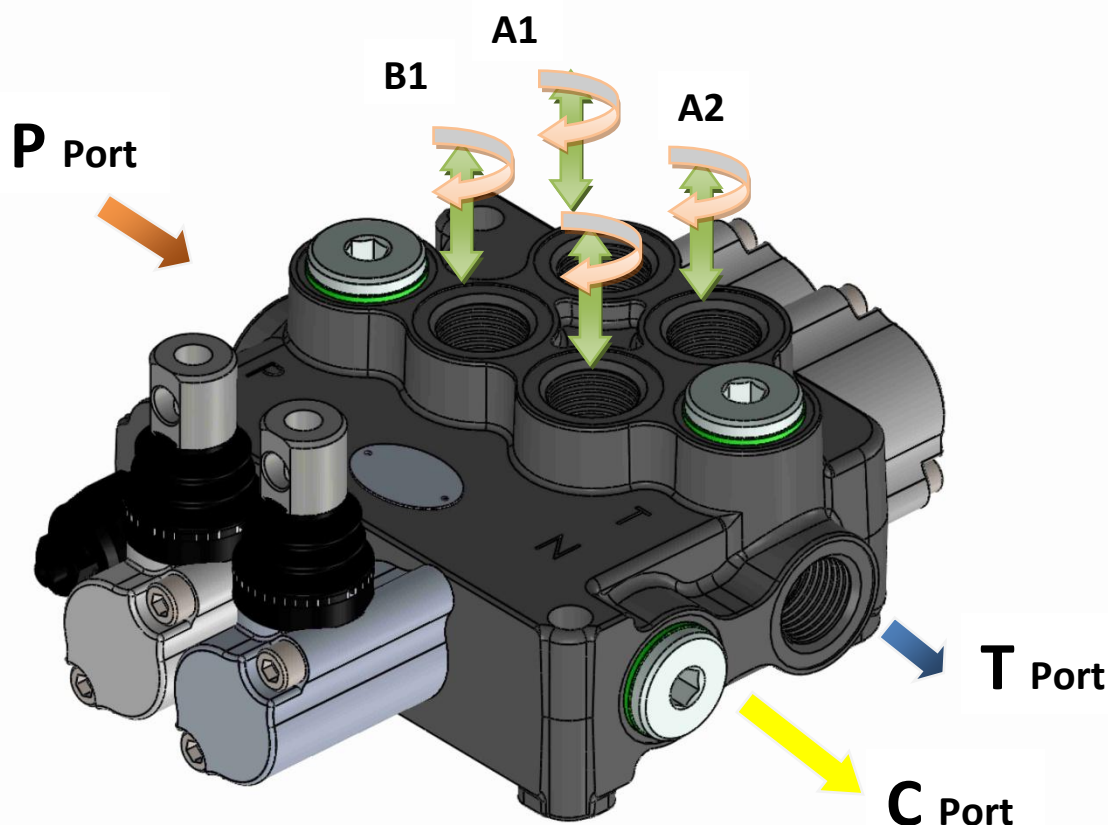
<p>Kit No: CS</p>	
 <p>A detailed technical drawing showing a cross-section of a hydraulic valve. The valve has a complex internal structure with multiple ports. Two ports on the left are labeled 'P', and a port on the right is labeled 'T'. The drawing shows the internal spool and valve seats, illustrating the closed-center configuration.</p>	<p>Sectional Appearance</p>
 <p>A schematic hydraulic circuit diagram. It shows a vertical line representing the valve's internal passage. A horizontal line from the top represents the pressure (P) port, and a horizontal line from the right represents the tank (T) port. The diagram shows the valve in a closed-center position, where the P and T ports are not connected to the main passage.</p>	<p>Hydraulic Circuit</p> <p>Code:GM - MS45-2P / SMR2-120 / 1A-SR-STL/1A-SR-STL/CT-PA1/SGT</p>

Installation and Maintenance

The GM - MS45 valve is assembled and tested as per the technical specification of this catalog.

Before the final installation on your equipment, follow the below recommendation:

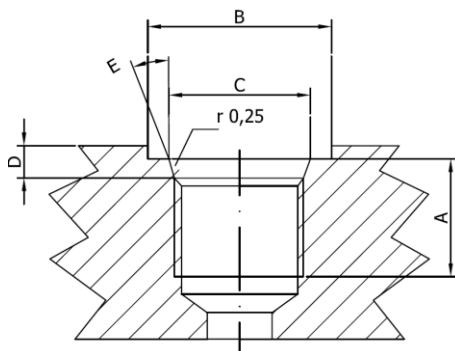
- The valve can be assembled in any position, in order to prevent body deformation and spool sticking mount the product on a flat surface;
- In order to prevent the possibility of water entering the lever box and spool control kit, do not use high pressure wash down directly on the valve;
- Prior to painting, ensure plastic port plugs are tightly in place.



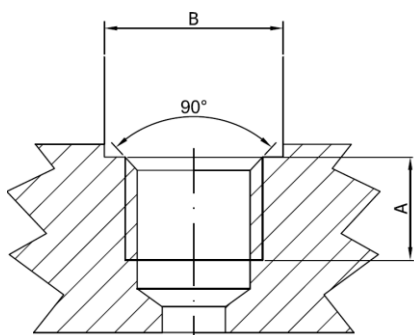
Threads Type (Nm / lbft)	P Port	A and B Port	T and CPort
BSP (ISO 228/1)	G 3/8	G 3/8	G 1/2
With O--Ring seal	35 / 25.8	35 / 25.8	50 / 36.9
With copper washer	40 / 29.5	40 / 29.5	60 / 44.3
With steel and rubber washer	30 / 22.1	30 / 22.1	60 / 44.3
BSP (ISO 228/1)	G 1/2	G 1/2	G 1/2
With O--Ring seal	50 / 36.9	50 / 36.9	50 / 36.9
With copper washer	60 / 44.3	60 / 44.3	60 / 44.3
With steel and rubber washer	60 / 44.3	60 / 44.3	60 / 44.3
UN--UNF (ISO 11926--1)	3/4--16 UNF--2B	9/16--18 UNF--2B	3/4--16 UNF--2B
With O--Ring seal	50 / 36.9	30 / 22.1	50 / 36.9
METRIC (ISO 262)	M18 x 1.5	M18 x 1.5	M18 x 1.5
With O--Ring seal	35 / 25.8	35 / 25.8	35 / 25.8
With copper washer	40 / 29.5	40 / 29.5	40 / 29.5
With steel and rubber washer	40 / 29.5	40 / 29.5	40 / 29.5

Technical Data

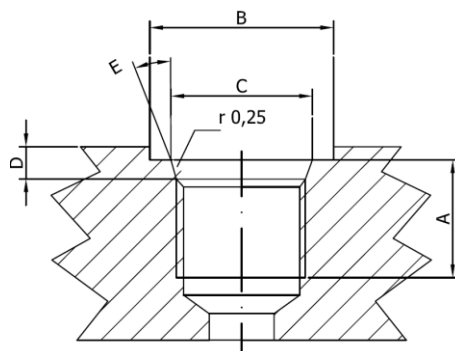
Ports Dimensional Data



SAE UN-UNF (ISO 725)							
Dimensions		9/16-18 UNF SAE6		3/4-16 UNF SAE8		7/8-14 UNF SAE10	
mm	in						
A		13	0,51	15	13	0,51	15
B		25	0,83	30	25	0,83	30
C		13,6	0,61	20,6	13,6	0,61	20,6
D		2,5	0,10	2,5	2,5	0,10	2,5
E		15°		15°		15°	



BSP (ISO 228)							
Dimensions		G1/4		G3/8		G1/2	
mm							
A		14	0,55	14	14	0,55	14
B		19	0,75	23	19	0,75	23



METRIC (ISO 262)							
Dimensions		M18x1,5 ISO 262		M22x1,5 ISO 262			
mm	in						
A		14	0,55	14	0,55		
B		27,5	1,08	27,5	1,08		