



ÇİFT YÖNLÜ POMPA -
20 SERİSİ DİŞLİ POMPA-

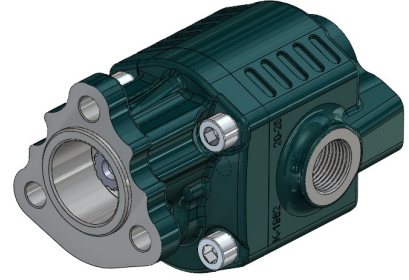
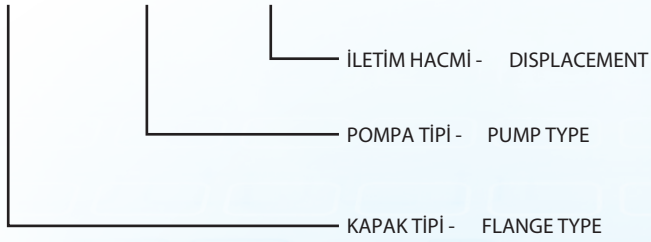
BIDIRECTIONAL PUMP
20 SERIES GEAR PUMP

UNI SERIE

KODLAMA SİSTEMİ - CODE SYSTEMS

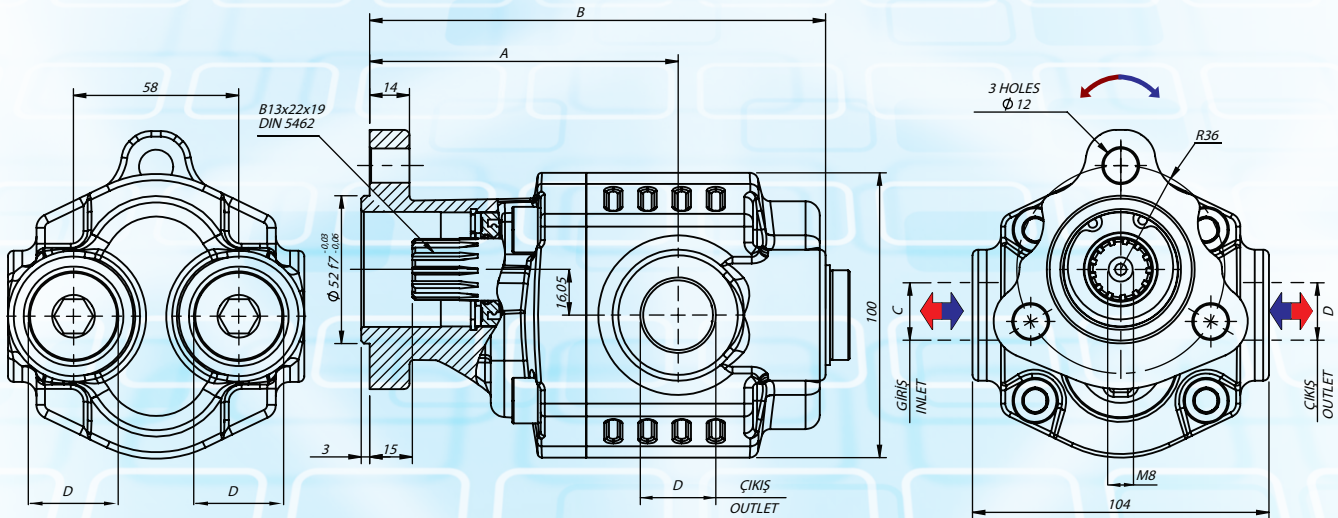
XXX - XXX - XX

DIN 5462



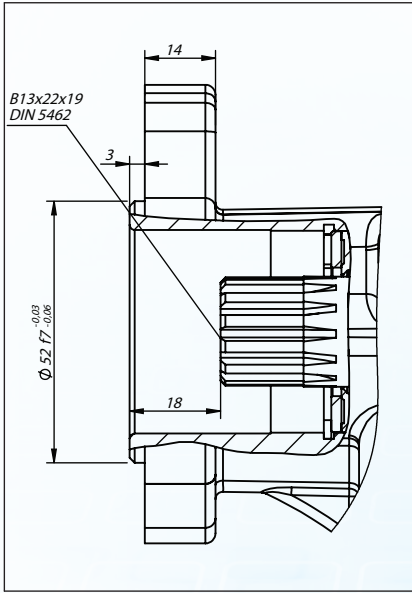
Hidrolik pompa sembolü
Hydraulic pump symbol

ÇİFT YÖNLÜ
BI-DIRECTIONAL



TEKNİK DATA - TECHNICAL DATA

Kod Code	İletim Hacmi Displacement cm ³ /rev	A mm	B mm	C GİRİŞ INLET	D ÇIKIŞ OUTLET	AĞIRLIK WEIGHT kg
UNI -6 BD	6.10	78	130	G1/2"	G1/2"	4
UNI -10 BD	10.02	84	136	G1/2"	G1/2"	4.5
UNI -16 BD	16.20	93.5	145.5	G1/2"	G1/2"	4.9
UNI -20 BD	20.12	100	152	G1/2"	G1/2"	5.3
UNI -25 BD	25.05	108	160	G3/4"	G3/4"	5.5
UNI -32 BD	32.18	119	171	G3/4"	G3/4"	6
UNI -40 BD	40.15	132	184	G3/4"	G3/4"	6.5



ŞAFT ÖZELLİKLERİ
SHAFT FEATURES

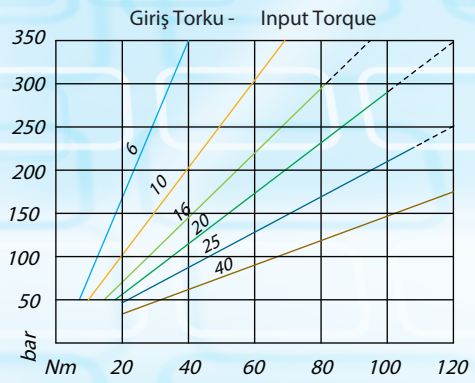
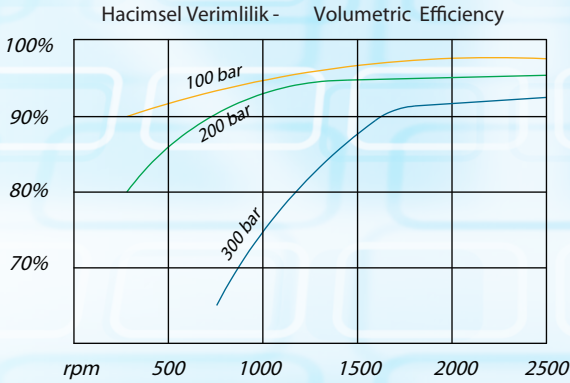
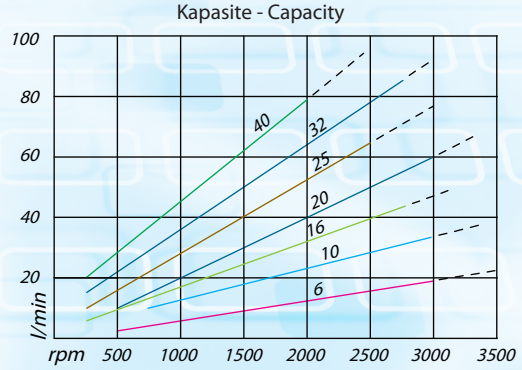
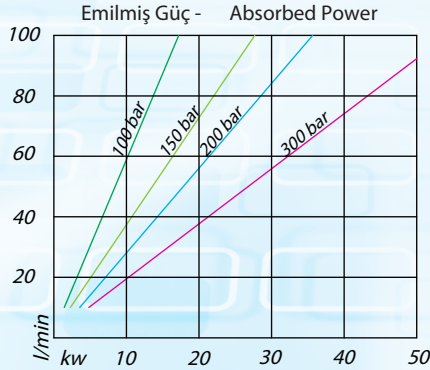
TEKNİK DATA - TECHNICAL DATA

Giriş Basıncı Inlet Pressure	0.7 ÷ 1.5 bar
Çalışma Viskozite Seviyesi Operating Viscosity Range	-12 : 100 st
Sıvı Sıcaklığı °C (t) Fluid Temperature °C (t)	-10° +80°C

TAVSİYE EDİLEN FİLTRE (Geri Dönüş)
RECOMMENDED FILTER (Return Or Outlet)

Çalışma Basıncı Working Pressure	Kirlilik - Contamination NAS 1638 ISO 4406	Filtre- Filter βx=75
≤ 200 bar	12 21/18	40µm
≥ 200 bar	11 20/17	25µm

DİYAGRAMLAR- DIAGRAMS



TİP - TYPE		6	10	16	20	25	32	40
Yer Değişirme Displacement	cm/n ³ cm/ rev. ³	6.1	10.20	16.20	20.12	25.05	32.18	40.15
Maksimum Sürekli Çalışma Basıncı Max. Continuous Operating Pressure	bar	280	280	280	260	220	190	180
Max. Hız Max. Speed	min ⁻¹	3000	3000	3000	3000	3000	2800	2800

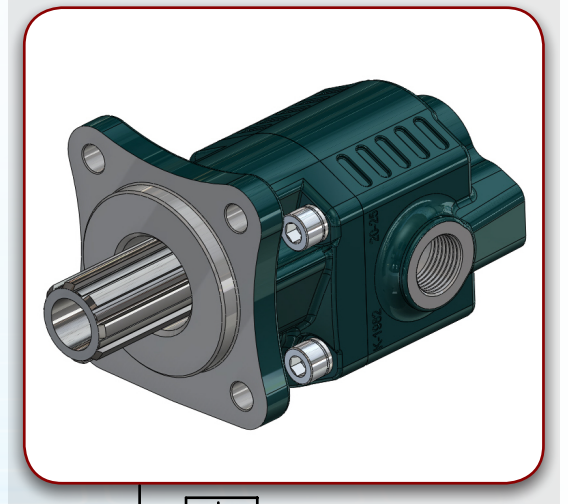
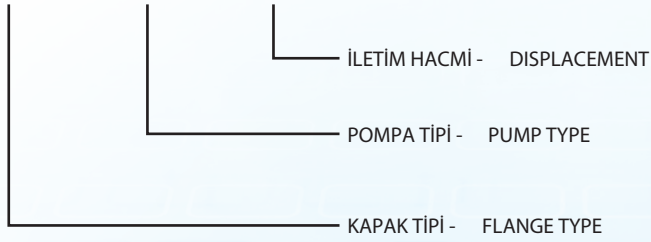
ÇİFT YÖNLÜ POMPA - BIDIRECTIONAL PUMP
20 SERİSİ DİŞLİ POMPA- 20 SERIES GEAR PUMP

ISO SERIE

DIN 5462

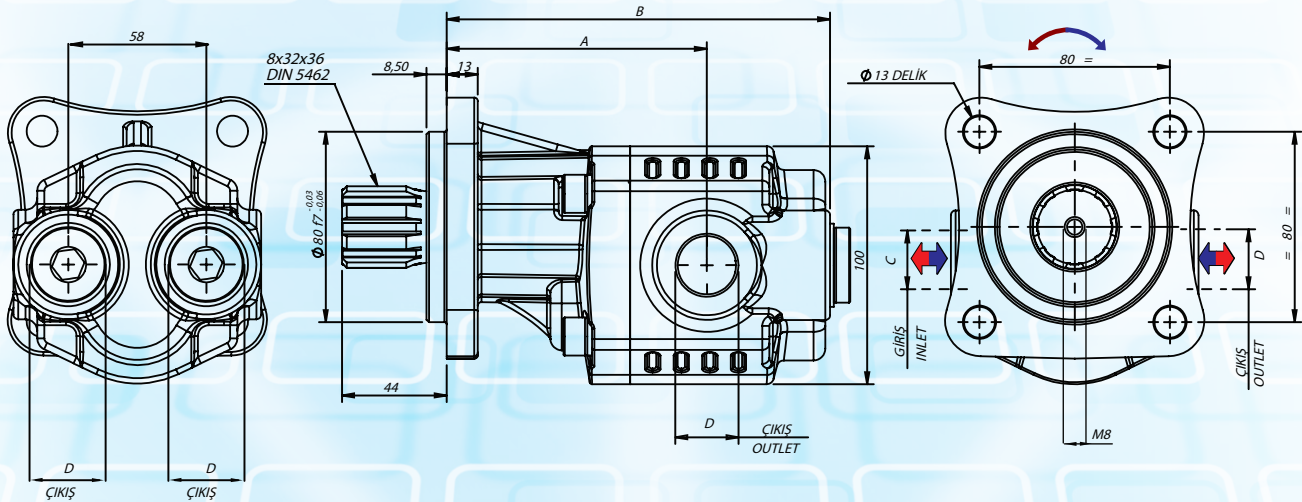
KODLAMA SİSTEMİ - CODE SYSTEMS

XXX - XXX - XX



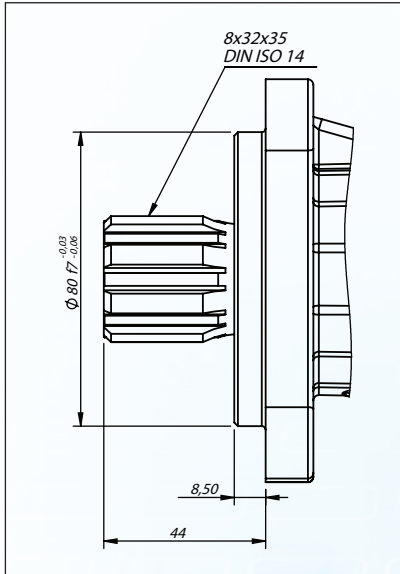
Hidrolik pompa sembolü
Hydraulic pump symbol

ÇİFT YÖNLÜ
BI-DIRECTIONAL



TEKNİK DATA - TECHNICAL DATA

Kod Code	İletim Hacmi Displacement cm ³ /rev	A mm	B mm	C GİRİŞ INLET	D ÇIKIŞ OUTLET	AĞIRLIK WEIGHT kg
ISO -6 BD	6.10	80	132	G1/2"	G1/2"	6
ISO -10 BD	10.02	86	138	G1/2"	G1/2"	6.5
ISO -16 BD	16.20	95.5	147.5	G1/2"	G1/2"	6.9
ISO -20 BD	20.12	102	152	G1/2"	G1/2"	7.3
ISO -25 BD	25.05	110	162	G3/4"	G3/4"	7.5
ISO -32 BD	32.18	121	173	G3/4"	G3/4"	8
ISO -42 BD	40.15	134	186	G3/4"	G3/4"	8.5



ŞAFT ÖZELLİKLERİ
SHAFT FEATURES

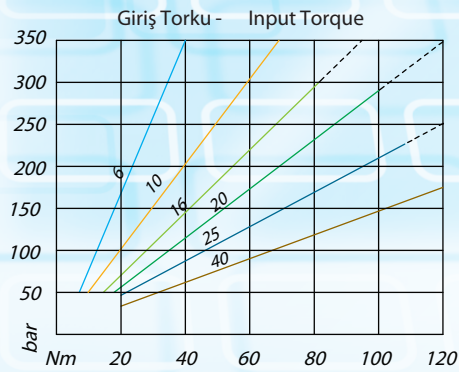
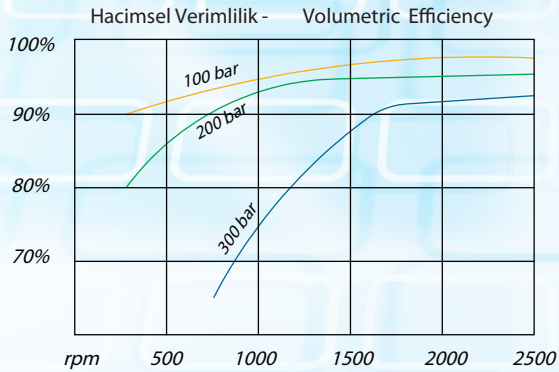
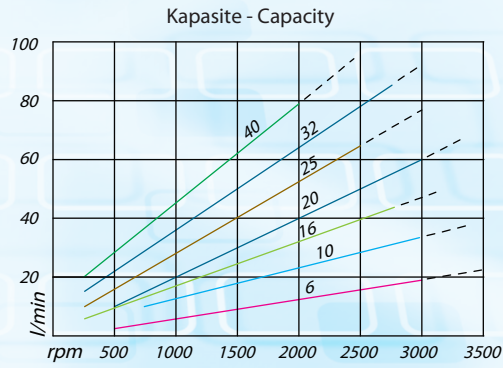
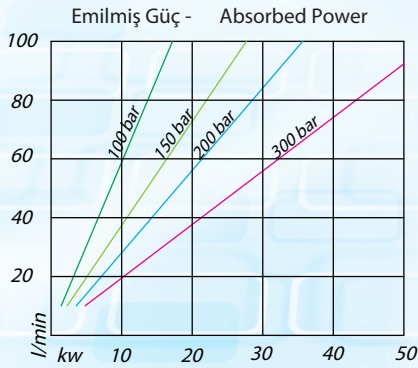
TEKNİK DATA - TECHNICAL DATA

Giriş Basıncı Inlet Pressure	0.7 ÷ 1.5 bar
Çalışma Viskozite Seviyesi Operating Viscosity Range	-12 : 100 st
Sıvı Sıcaklığı °C (t) Fluid Temperature °C (t)	-10° +80°C

TAVSİYE EDİLEN FİLTRE (Geri Dönüş) RECOMMENDED FILTER (Return Or Outlet)

Çalışma Basıncı Working Pressure	Kirlilik - Contamination NAS 1638 ISO 4406	Filtre - Filter βx=75
≤ 200 bar	12	21/18
≥ 200 bar	11	20/17

DIYAGRAMLAR- DIAGRAMS



TİP - TYPE		6	10	16	20	25	32	40
Yer Değiştirme Displacement	cm/n ³ cm/rev. ³	6.1	10.20	16.20	20.12	25.05	32.18	40.15
Maksimum Sürekli Çalışma Basıncı Max. Continuous Operating Pressure	bar	280	280	280	260	220	190	180
Max. Hız Max. Speed	min ⁻¹	3000	3000	3000	3000	3000	2800	2800

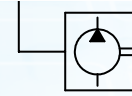
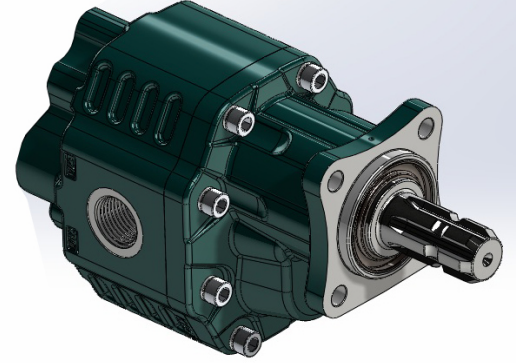
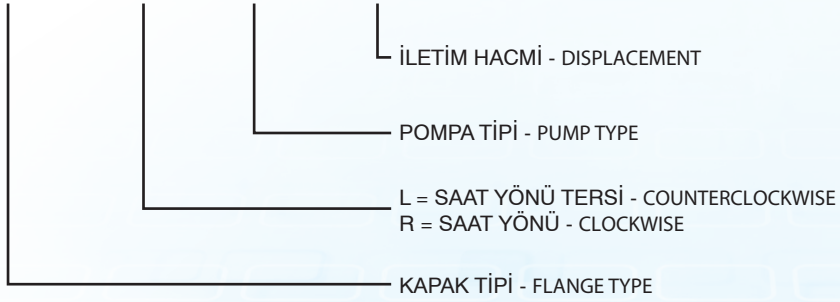
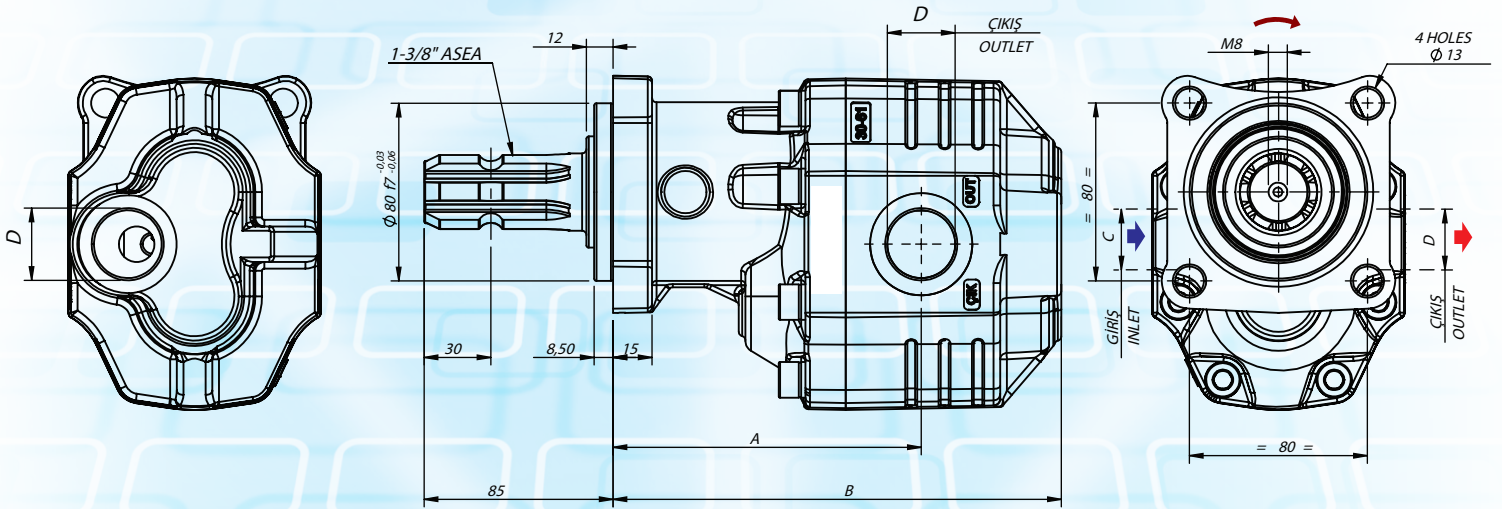
30 SERİSİ DİŞLİ POMPA- 30 SERIES GEAR PUMP

ASEA SERIE

KODLAMA SİSTEMİ - CODE SYSTEMS

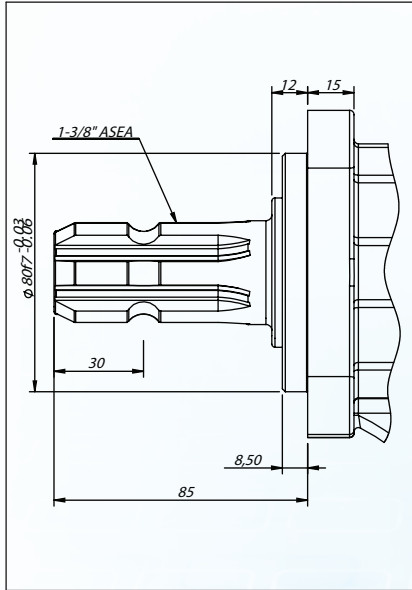
XXX - R(L) XXX - XX

1-3/8"

Hidrolik pompa sembolü
Hydraulic pump symbol

TEKNİK DATA - TECHNICAL DATA

Kod Code	İletim Hacmi Displacement cm ³ /rev	A mm	B mm	C GİRİŞ INLET	D ÇIKIŞ OUTLET	AĞIRLIK WEIGHT kg
ASEA R (L)-17	17.20	124.5	171.5	G1/2"	G1/2"	10.5
ASEA R (L)-27	27.30	126.5	177.5	G3/4"	G3/4"	10.9
ASEA R (L)-34	33.80	128.5	182.5	G3/4"	G3/4"	11.6
ASEA R (L)-43	43.80	133	188.5	G1"	G3/4"	12
ASEA R (L)-51	51.73	134.5	193.5	G1"	G1"	12.4
ASEA R (L)-61	61.95	138.5	201.5	G1"	G1"	13
ASEA R (L)-82	82.13	143.5	212.5	G1 1/4"	G1"	14



ŞAFT ÖZELLİKLERİ
SHAFT FEATURES

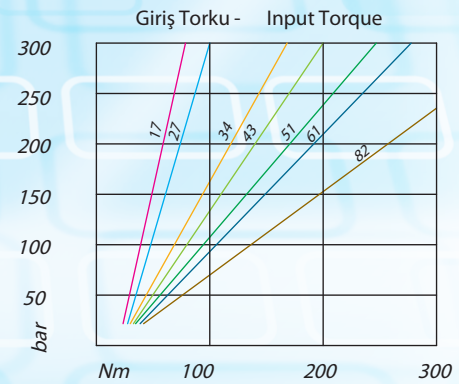
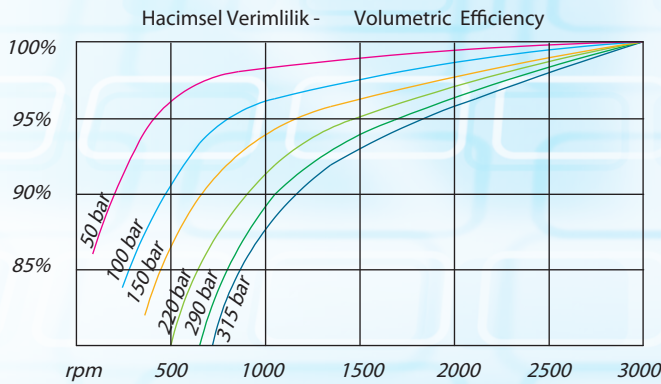
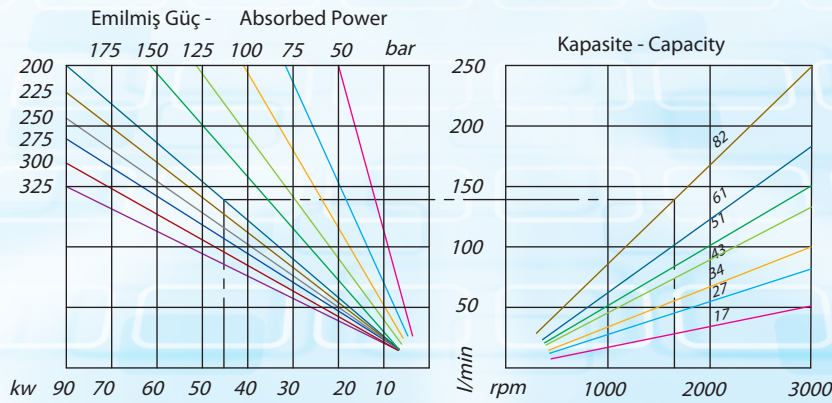
TEKNİK DATA - TECHNICAL DATA

Giriş Basıncı Inlet Pressure	0.7 ÷ 1.5 bar
Çalışma Viskozite Seviyesi Operating Viscosity Range	-12 : 100 st
Sıvı Sıcaklığı °C (t) Fluid Temperature °C (t)	-10° +80°C

TAVSİYE EDİLEN FİLTRE (Geri Dönüş)
RECOMMENDED FILTER (Return Or Outlet)

Çalışma Basıncı Working Pressure	Kirlilik - Contamination NAS 1638 ISO 4406	Filtre - Filter βx=75
≤ 200 bar	12	21/18
≥ 200 bar	11	20/17

DİYAGRAMLAR- DIAGRAMS



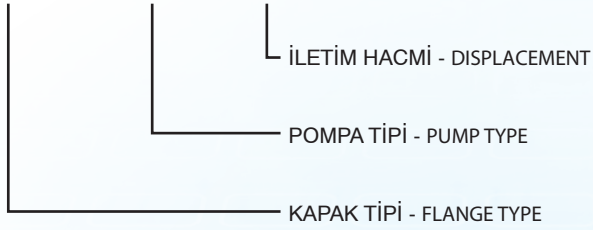
TIP - TYPE		17	27	34	43	51	61	82
Yer Değiştirme Displacement	cm/n ³ cm/rev. ³	17.20	27.30	33.80	43.80	51.73	61.95	82.13
Maksimum Sürekli Çalışma Basıncı Max. Continuous Operating Pressure	bar	300	300	285	280	230	225	200
Max. Hız Max. Speed	min ⁻¹	3000	3000	2700	2400	2400	2100	1900

ÇİFT YÖNLÜ POMPA -
30 SERİSİ DİŞLİ POMPA-

BIDIRECTIONAL PUMP
30 SERIES GEAR PUMP

KODLAMA SİSTEMİ - CODE SYSTEMS

XXX - XXX - XX



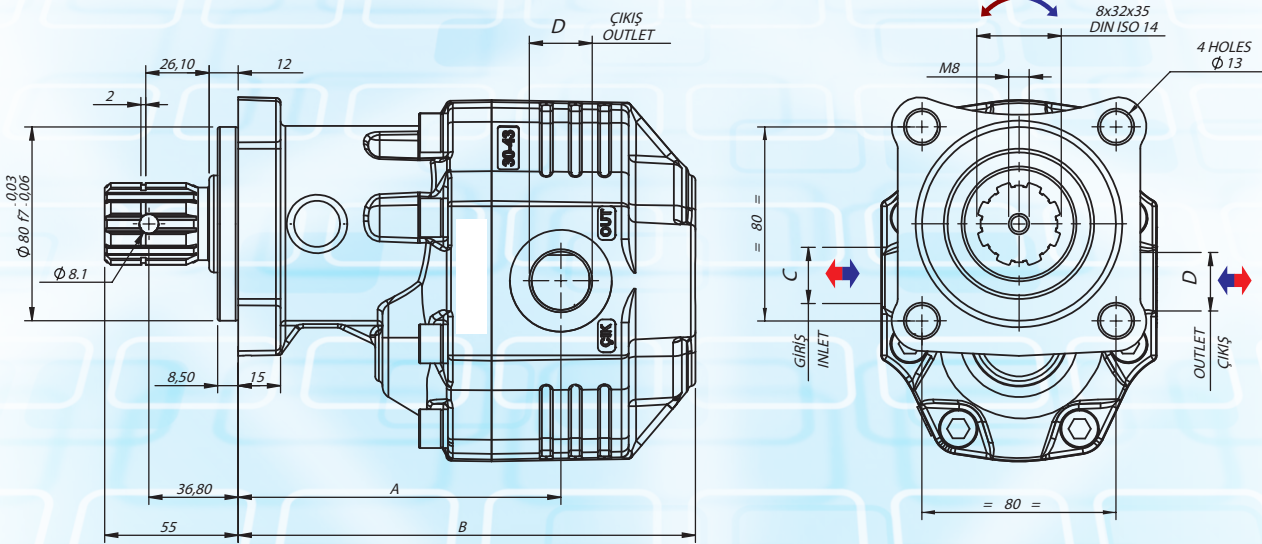
DIN 5462



Hidrolik pompa sembolü
Hydraulic pump symbol



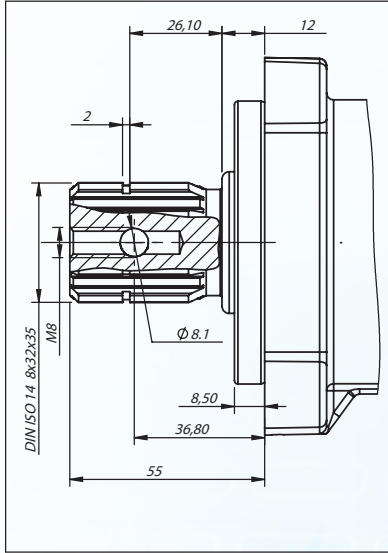
ÇİFT YÖNLÜ
BI-DIRECTIONAL



TEKNİK DATA - TECHNICAL DATA

Kod Code	İletim Hacmi Displacement cm ³ /rev	A mm	B mm	C GİRİŞ INLET	D ÇIKIŞ OUTLET	AĞIRLIK WEIGHT kg
ISO -17 BD	17.20	124.5	171.5	G1/2"	G1/2"	11
ISO -27 BD	27.30	126.5	177.5	G3/4"	G3/4"	11.5
ISO -34 BD	33.80	128.5	182.5	G3/4"	G3/4"	12
ISO -43 BD	43.80	133	188.5	G1"	G1"	12.5
ISO -51 BD	51.73	134.5	193.5	G1"	G1"	13
ISO -61 BD	61.95	138.5	201.5	G1"	G1"	13.3
ISO -82 BD	82.13	143.5	212.5	G1 1/4"	G1"	14

TEKNİK DATA - TECHNICAL DATA



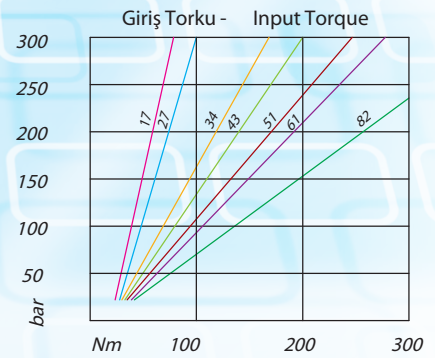
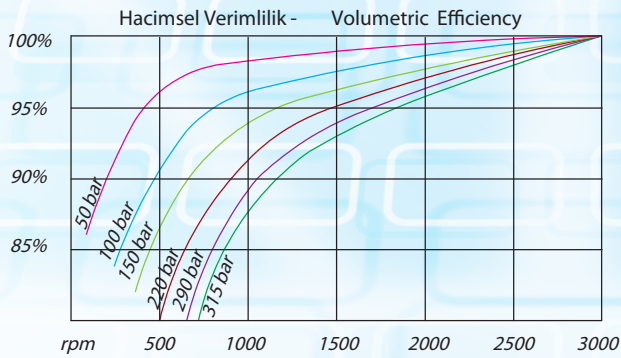
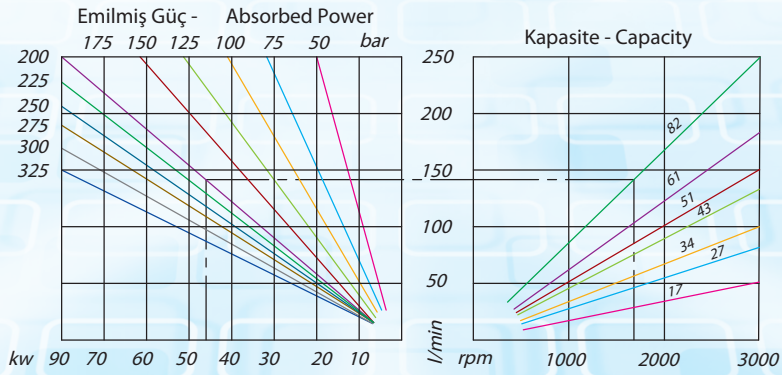
ŞAFT ÖZELLİKLERİ
SHAFT FEATURES

Giriş Basıncı Inlet Pressure	0.7 ÷ 1.5 bar
Çalışma Viskozite Seviyesi Operating Viscosity Range	-12 : 100 cSt
Sıvı Sıcaklığı °C (t) Fluid Temperature °C (t)	-10°+80°C

TAVSİYE EDİLEN FİLTRE (Geri Dönüş)
RECOMMENDED FILTER (Return Or Outlet)

Çalışma Basıncı Working Pressure	Kirlilik - Contamination NAS 1638 ISO 4406	Filtre- Filter βx=75
≤ 200 bar	12	21/18
≥ 200 bar	11	20/17

DİYAGRAMLAR- DIAGRAMS



TİP - TYPE		17	27	34	43	51	61	82
Yer Değiştirme Displacement	cm/n ³ cm/rev. ³	17.20	27.30	33.80	43.80	51.73	61.95	82.13
Maksimum Sürekli Çalışma Basıncı Max. Continuous Operating Pressure	bar	300	300	285	280	230	225	200
Max. Hız Max. Speed	min ⁻¹	2800	2800	2600	2300	2300	1900	1700

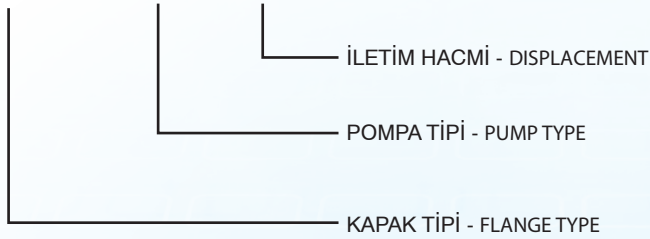
ÇİFT YÖNLÜ POMPA- BI-DIRECTIONAL PUMP
30 SERİSİ DİŞLİ POMPA- 30 SERIES GEAR PUMP

UNI SERIE

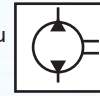
KODLAMA SİSTEMİ - CODE SYSTEMS

XXX - XXX - XX

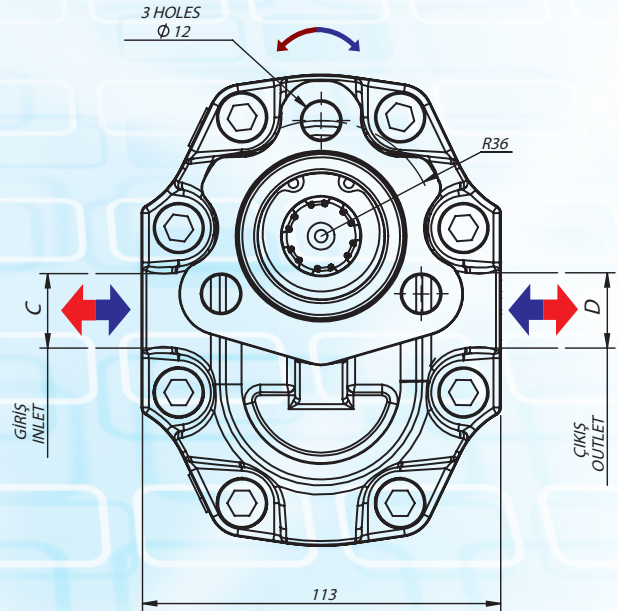
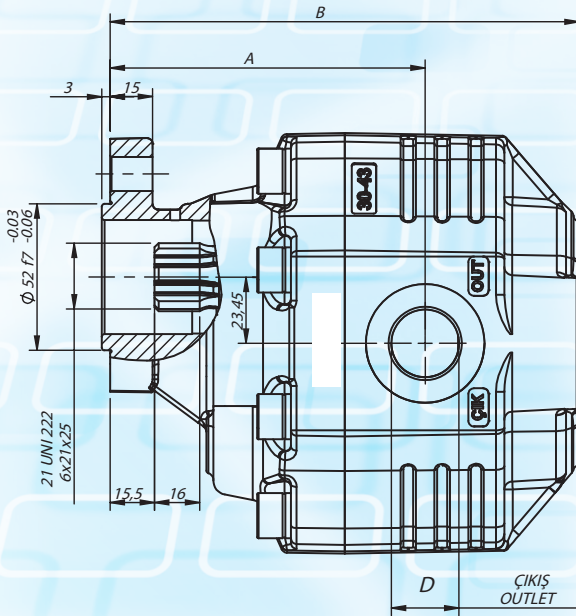
UNI 21-222



Hidrolik pompa sembolü
Hydraulic pump symbol



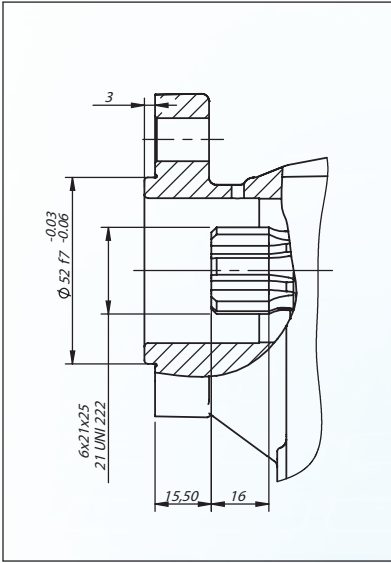
ÇİFT YÖNLÜ
BI-DIRECTIONAL



TEKNİK DATA - TECHNICAL DATA

Kod Code	İletim Hacmi Displacement cm ³ /rev	A mm	B mm	C GİRİŞ INLET	D ÇIKIŞ OUTLET	AĞIRLIK WEIGHT kg
UNI - 17 BD	17.20	106	153	G1/2"	G1/2"	9
UNI - 27 BD	27.30	108	159	G3/4"	G3/4"	9.5
UNI - 34 BD	33.80	108	159	G3/4"	G3/4"	10
UNI - 43 BD	43.80	114.50	170	G1"	G3/4"	10.5
UNI - 51 BD	51.73	116	175	G1"	G1"	11
UNI - 61 BD	61.95	120	183	G1"	G1"	11.5
UNI - 82 BD	82.13	125	194	G1 1/4"	G1"	12

TEKNİK DATA - TECHNICAL DATA



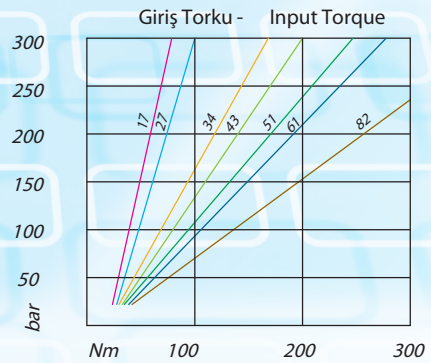
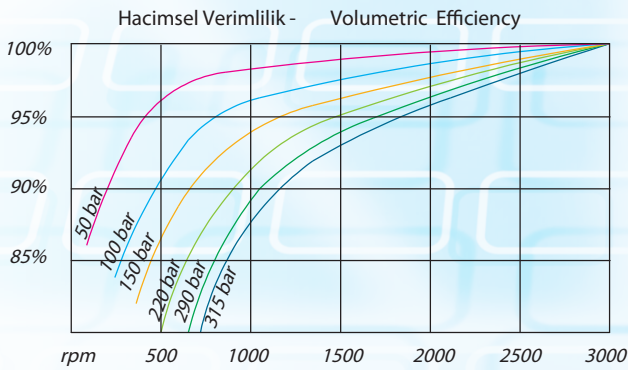
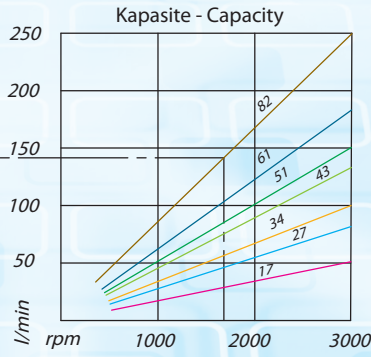
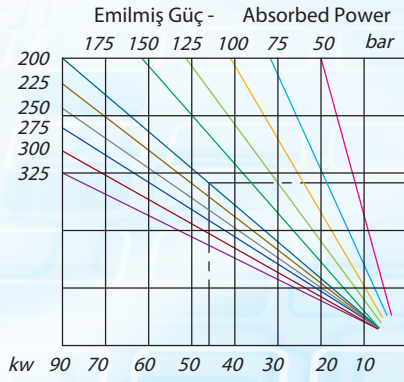
ŞAFT ÖZELLİKLERİ
SHAFT FEATURES

Giriş Basıncı Inlet Pressure	0.7 ÷ 1.5 bar
Çalışma Viskozite Seviyesi Operating Viscosity Range	-12 : 100 cSt
Sıvı Sıcaklığı °C (t) Fluid Temperature °C (t)	-10°+80°C

TAVSİYE EDİLEN FİLTRE (Geri Dönüş)
RECOMMENDED FILTER (Return Or Outlet)

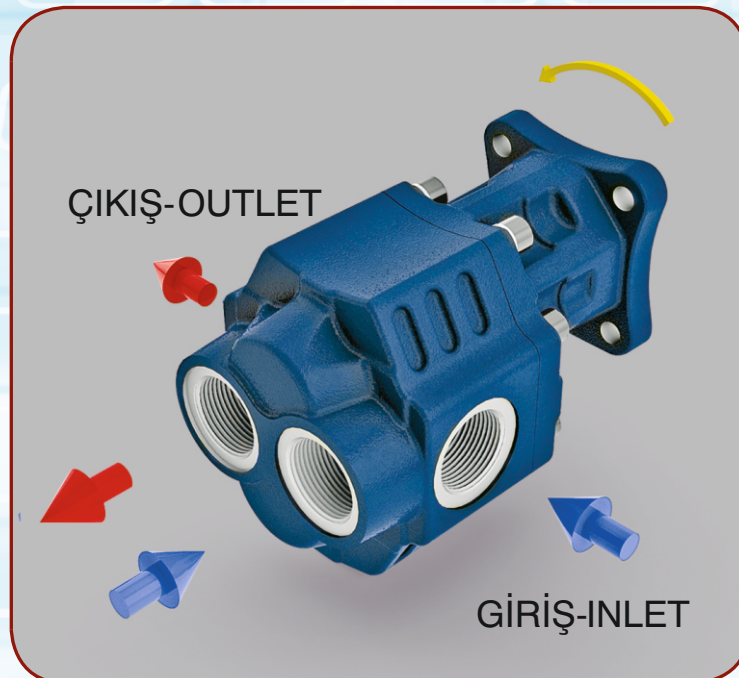
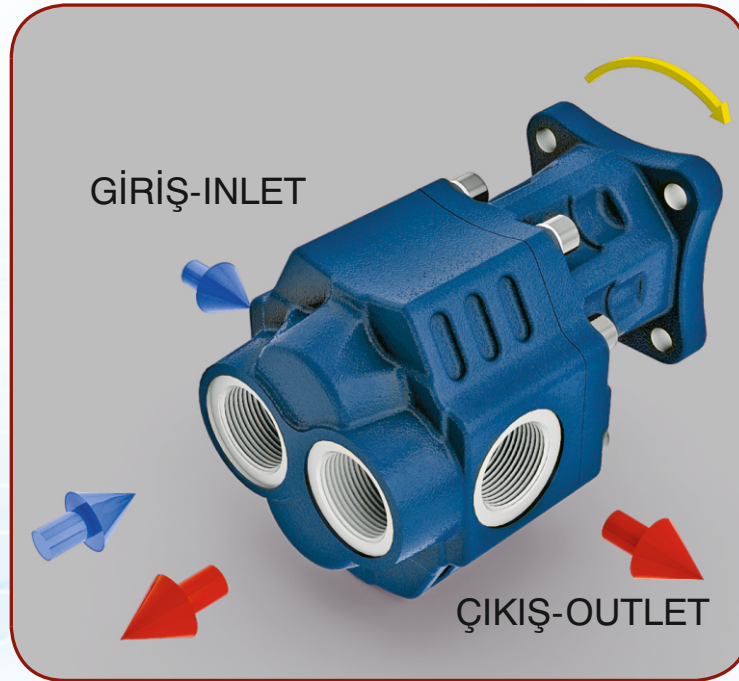
Çalışma Basıncı Working Pressure	Kirlilik - Contamination NAS 1638 ISO 4406	Filtre- Filter βx=75
≤ 200 bar	12	21/18
≥ 200 bar	11	20/17

DİYAGRAMLAR- DIAGRAMS



TİP - TYPE		17	27	34	43	51	61	82
Yer Değiştirme Displacement	cm/n ³ cm/rev. ³	17.20	27.30	33.80	43.80	51.73	61.95	82.13
Maksimum Sürekli Çalışma Basıncı Max. Continuous Operating Pressure	bar	300	300	285	280	230	225	200
Max. Hız Max. Speed	min ⁻¹	2800	2800	2600	2300	2300	1900	1700

35 SERIES ISO BIDIRECTIONAL GEAR PUMP INLET-OUTLET PORT CHANGE



35 SERIES UNI BIDIRECTIONAL GEAR PUMP INLET-OUTLET PORT CHANGE



ÇİFT YÖNLÜ POMPA-
35 SERİSİ DIŞLI POMPA -

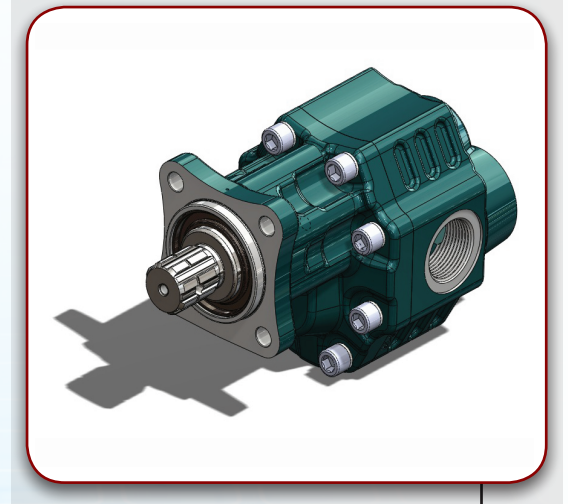
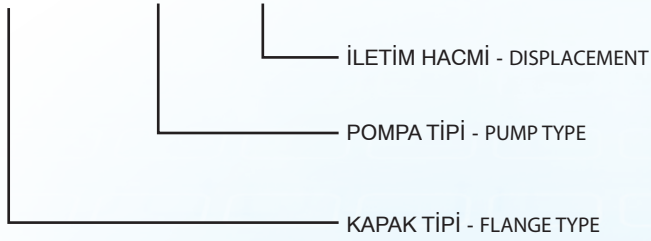
BIDIRECTIONAL PUMP
35 SERIES GEAR PUMP

ISO SERIE

KODLAMA SİSTEMİ - CODE SYSTEMS

XXX - XXX - XX

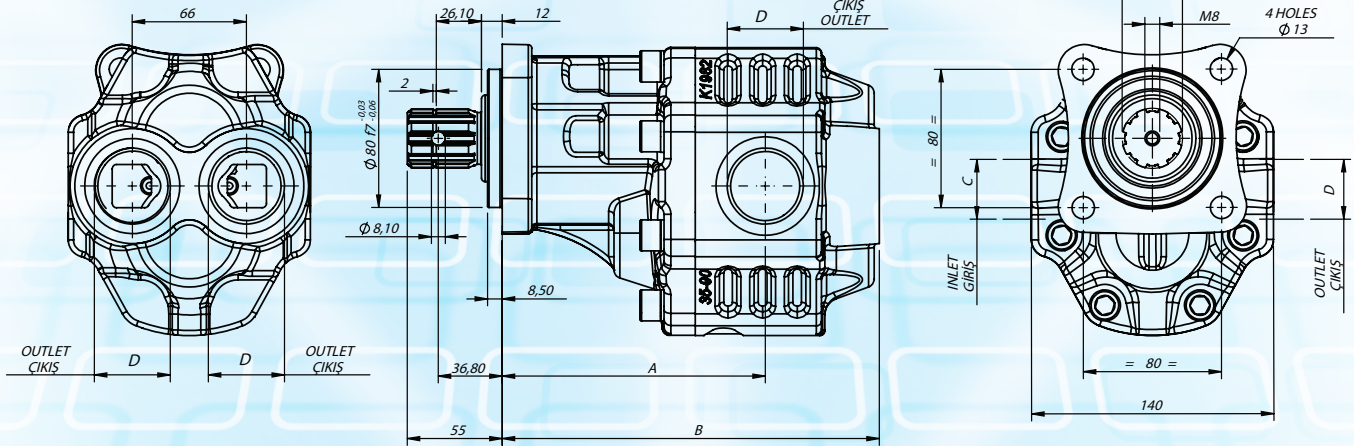
DIN 5462



Hidrolik pompa sembolü
Hydraulic pump symbol

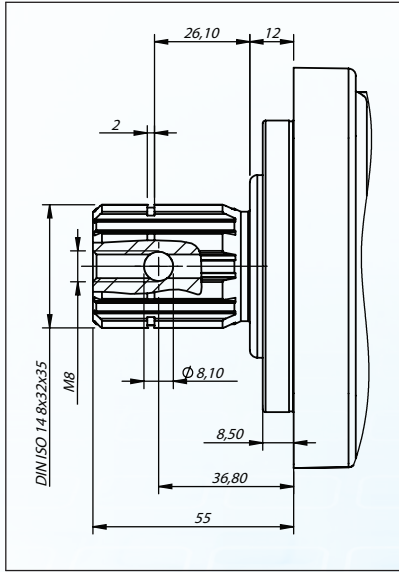


ÇİFT YÖNLÜ
BI-DIRECTIONAL



TEKNİK DATA - TECHNICAL DATA

Kod Code	İletim Hacmi Displacement cm ³ /rev	A mm	B mm	C GİRİŞ INLET	D ÇIKIŞ OUTLET	AĞIRLIK WEIGHT kg
ISO -60	63.50	149	224.5	G1"	G1"	17
ISO -90	90.20	162	237.5	G1 1/4"	G1 1/4"	19
ISO -110	114.50	172	247.5	G1 1/4"	G1 1/4"	19



ŞAFT ÖZELLİKLERİ
SHAFT FEATURES

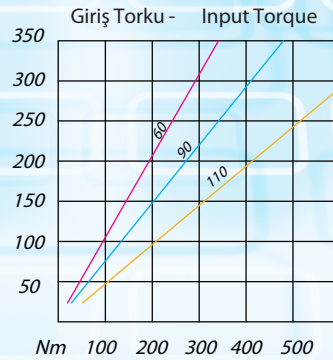
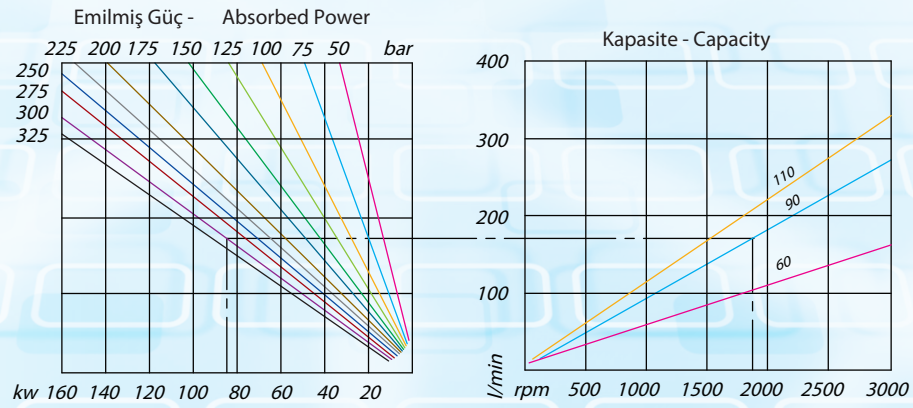
TEKNİK DATA - TECHNICAL DATA

Giriş Basıncı Inlet Pressure	0.7 ÷ 1.5 bar
Çalışma Viskozite Seviyesi Operating Viscosity Range	-12 : 100 cSt
Sıvı Sıcaklığı °C (t) Fluid Temperature °C (t)	-10°+80°C

TAVSİYE EDİLEN FİLTRE (Geri Dönüş)
RECOMMENDED FILTER (Return Or Outlet)

Çalışma Basıncı Working Pressure	Kirlilik - Contamination NAS 1638 ISO 4406	Filtre- Filter βx=75
≤ 200 bar	12	21/18
≥ 200 bar	11	20/17

DİYAGRAMLAR- DIAGRAMS



TİP - TYPE		60	90	110
Yer Değiştirme Displacement	cm/n ³ cm/rev. ³	63.50	90.20	110.50
Maksimum Sürekli Çalışma Basıncı Max. Continuous Operating Pressure	bar	230	230	205
Max. Hız Max. Speed	min ⁻¹	2250	2250	2250

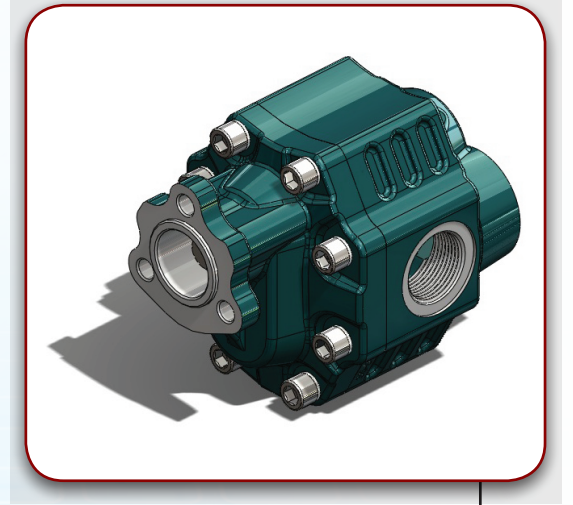
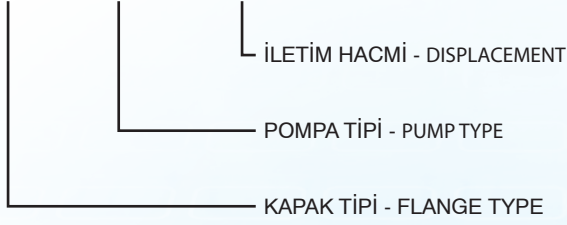
ÇİFT YÖNLÜ POMPA- BIDIRECTIONAL PUMP
35 SERİSİ DİŞLİ POMPA - 35 SERIES GEAR PUMP

UNI SERIE

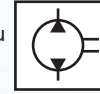
KODLAMA SİSTEMİ - CODE SYSTEMS

XXX - XX - XXX

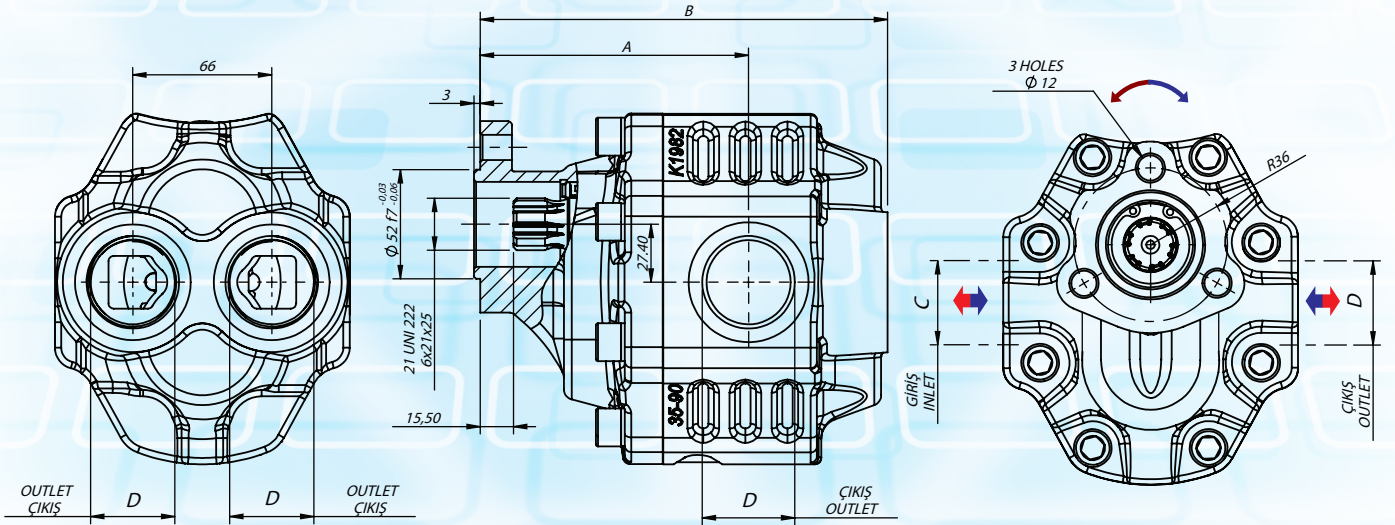
UNI 21-222



Hidrolik pompa sembolü
Hydraulic pump symbol



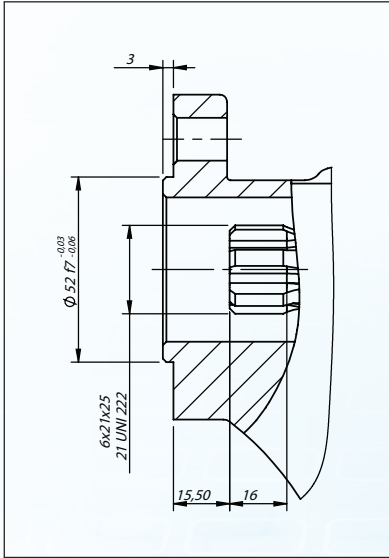
ÇİFT YÖNLÜ
BI-DIRECTIONAL



TEKNİKDATA - TECHNICAL DATA

Kod Code	İletim Hacmi Displacement cm ³ /rev	A mm	B mm	C GİRİŞ INLET	D ÇIKIŞ OUTLET	AĞIRLIK WEIGHT kg
ISO -60	63.50	130.5	199	G1"	G1"	17
ISO -90	90.20	136.5	212	G1 1/4"	G1 1/4"	17
ISO -110	114.50	146.5	222	G1 1/4"	G1 1/4"	18

TEKNİK DATA - TECHNICAL DATA



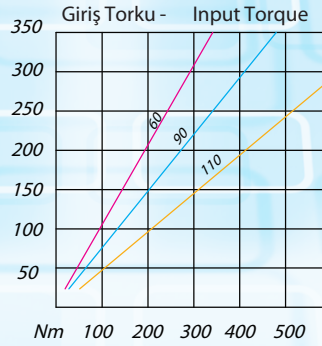
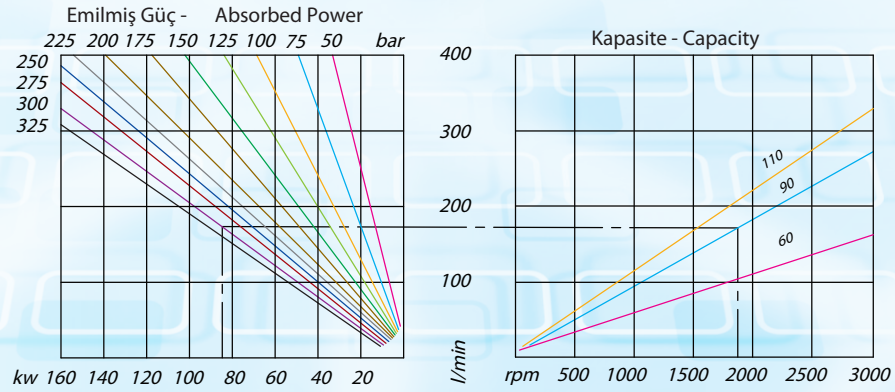
ŞAFT ÖZELLİKLERİ
SHAFT FEATURES

Giriş Basıncı Inlet Pressure	0.7 ÷ 1.5 bar
Çalışma Viskozite Seviyesi Operating Viscosity Range	-12 : 100 cSt
Sıvı Sıcaklığı °C (t) Fluid Temperature °C (t)	-10°+80°C

TAVSİYE EDİLEN FİLTRE (Geri Dönüş)
RECOMMENDED FILTER (Return Or Outlet)

Çalışma Basıncı Working Pressure	Kirlilik - Contamination NAS 1638 ISO 4406	Filtre- Filter $\beta_x=75$
≤ 200 bar	12	21/18
≥ 200 bar	11	20/17

DİYAGRAMLAR- DIAGRAMS



TİP - TYPE		63	90	110
Yer Değiştirme Displacement	cm/n ³ cm/rev. ³	63.50	90.20	110.50
Maksimum Sürekli Çalışma Basıncı Max. Continuous Operating Pressure	bar	230	230	205
Max. Hız Max. Speed	min ⁻¹	2250	2250	2250

40 SERİSİ DİŞLİ POMPA -

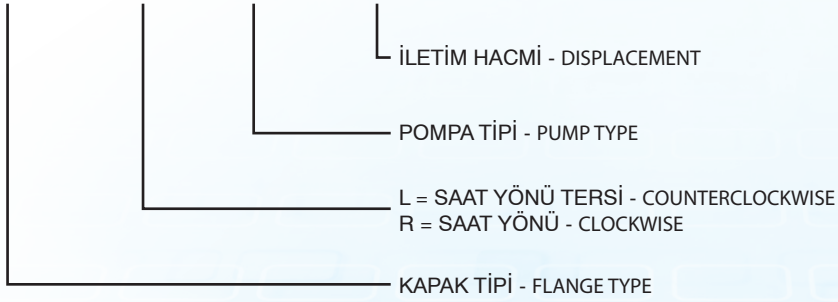
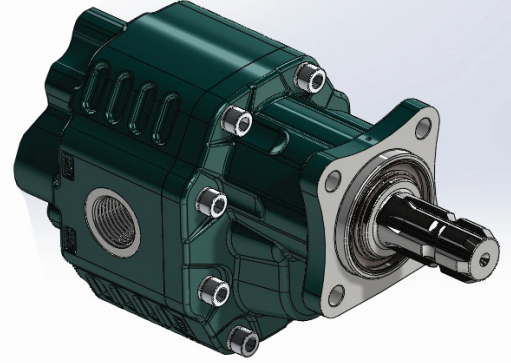
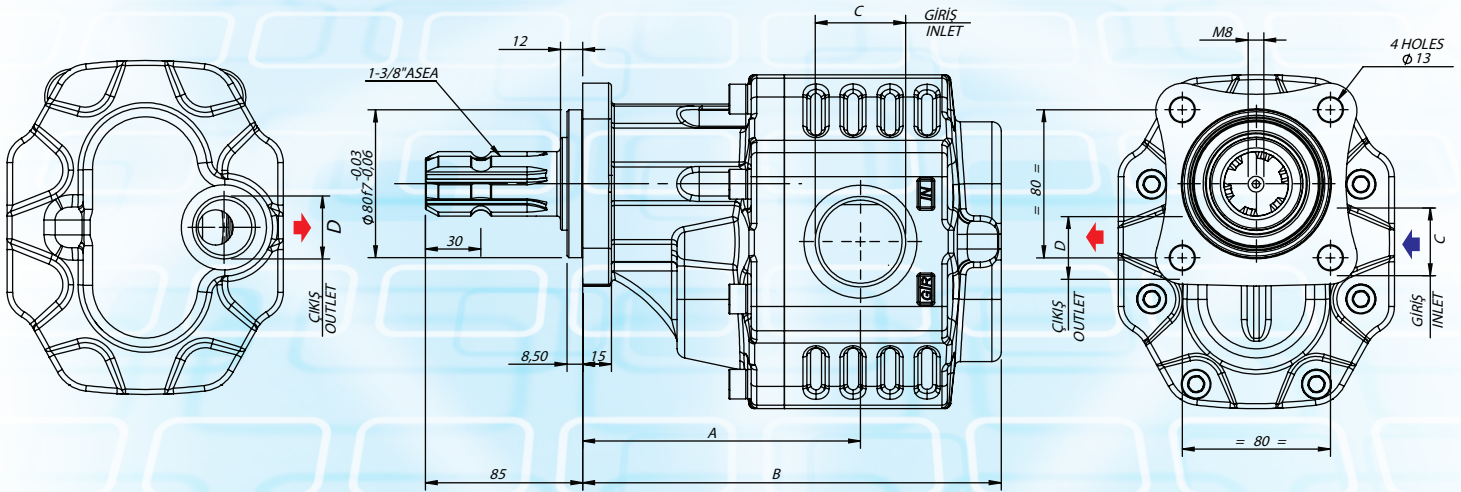
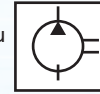
40 SERIES GEAR PUMP

ASEA SERIE

KODLAMA SİSTEMİ - CODE SYSTEMS

XXX - R(L) XXX - XX

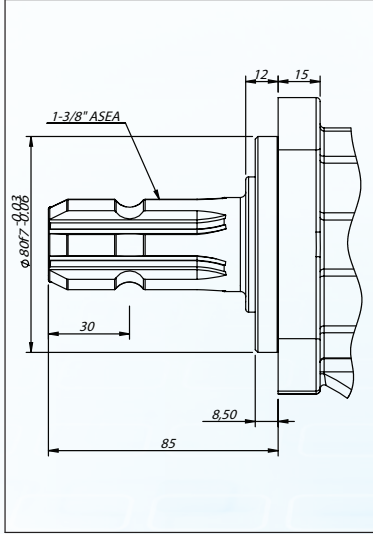
1-3/8"

Hidrolik pompa sembolü
Hydraulic pump symbol

TEKNİK DATA - TECHNICAL DATA

Kod Code	İletim Hacmi Displacement cm ³ / rev	A mm	B mm	C GİRİŞ INLET	D ÇIKIŞ OUTLET	AĞIRLIK WEIGHT kg
ASEA R (L) -63	63.20	139	204	G1"	G3/4"	19
ASEA R (L) -73	73.10	139	211.50	G1"	G3/4"	20
ASEA R (L) -87	87.25	143	214	G1 1/4"	G1"	21.2
ASEA R (L) -109	108.90	149	222	G1 1/4"	G1"	22.4
ASEA R (L) -133	132.95	150	231	G1 1/2"	G1"	23.6
ASEA R (L) -151	151.10	152.5	235	G1 1/2"	G1"	23.8

TEKNİK DATA - TECHNICAL DATA



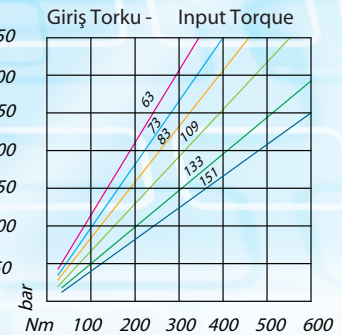
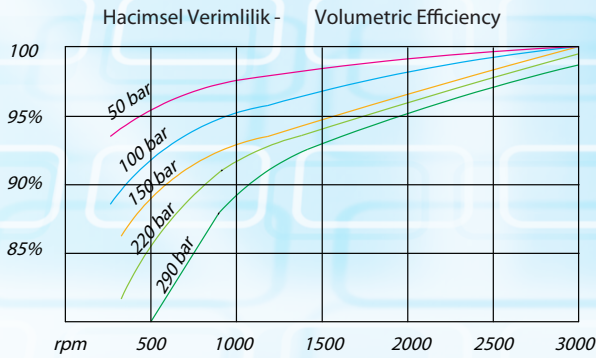
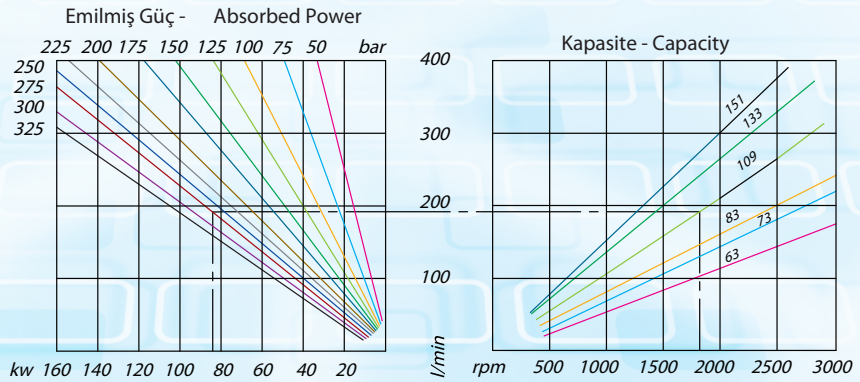
ŞAFT ÖZELLİKLERİ
SHAFT FEATURES

Giriş Basıncı Inlet Pressure	0.7 ÷ 1.5 bar
Çalışma Viskozite Seviyesi Operating Viscosity Range	-12 : 100 cSt
Sıvı Sıcaklığı °C (t) Fluid Temperature °C (t)	-10°+80°C

TAVSİYE EDİLEN FİLTRE (Geri Dönüş)
RECOMMENDED FILTER (Return Or Outlet)

Çalışma Basıncı Working Pressure	Kirlilik - Contamination NAS 1638 ISO 4406	Filtre- Filter βx=75
≤ 200 bar	12	21/18
≥ 200 bar	11	20/17

DİYAGRAMLAR- DIAGRAMS



TİP - TYPE		63	73	87	109	133	151
Yer Değiştirme Displacement	cm/n ³ cm/rev. ³	63.20	73.10	87.25	108.90	132.95	151.10
Maksimum Sürekli Çalışma Basıncı Max. Continuous Operating Pressure	bar	280	275	265	240	230	180
Max. Hız Max. Speed	min ⁻¹	2600	2600	2600	2600	2400	2400

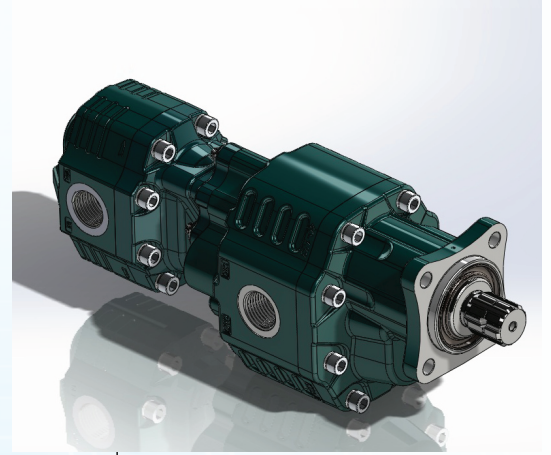
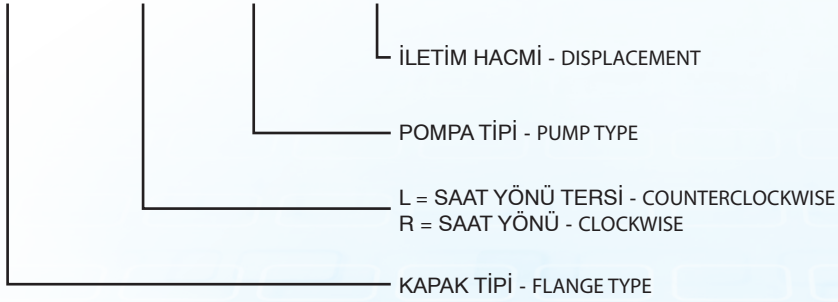
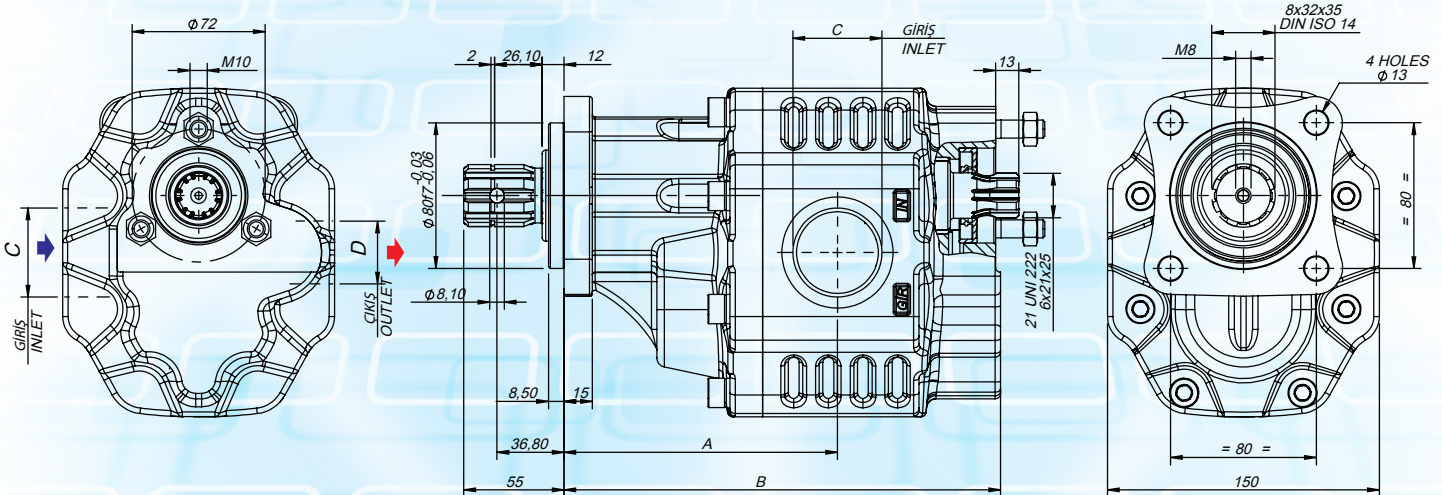
TANDEM DİŞLİ POMPA - TANDEM GEAR PUMP

ISO SERIE TANDEM

KODLAMA SİSTEMİ - CODE SYSTEMS

DIN 5462

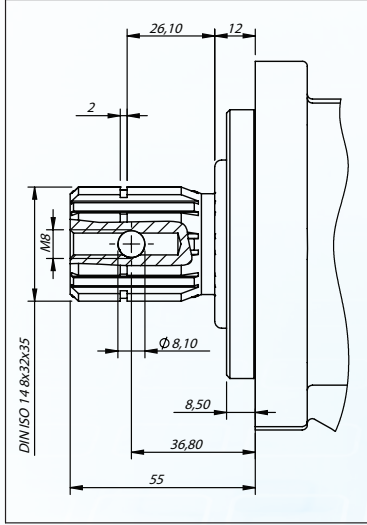
XXX - R(L) XXX - XX

Hidrolik pompa sembolü
Hydraulic pump symbol

TEKNİK DATA - TECHNICAL DATA

TANDEM	Kod Code	İletim Hacmi Displacement cm ³ /rev	A mm	B mm	C GİRİŞ INLET	D ÇIKIŞ OUTLET
		ISO R(L) TANDEM-63	63.20	139	211	G1Ó
	ISO R(L) TANDEM-73	73.10	139	215	G1Ó	G3/4Ó
	ISO R(L) TANDEM-87	87.25	143	224	G1 1/4Ó	G1Ó
	ISO R(L) TANDEM-109	108.90	149	230	G1 1/4Ó	G1Ó
	ISO R(L) TANDEM-133	132.95	150	239.5	G1 1/2Ó	G1Ó
	ISO R(L) TANDEM-151	151.10	152.5	243	G1 1/2Ó	G1Ó

TEKNİK DATA - TECHNICAL DATA



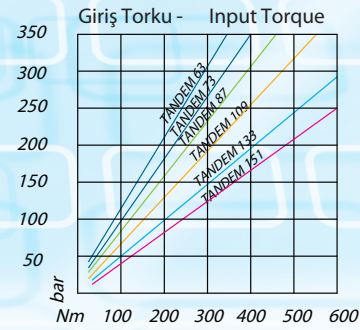
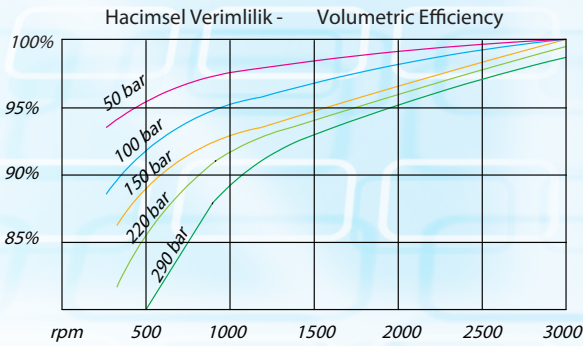
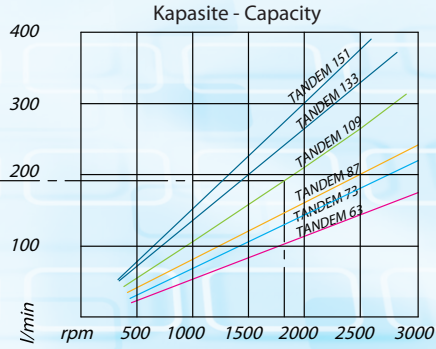
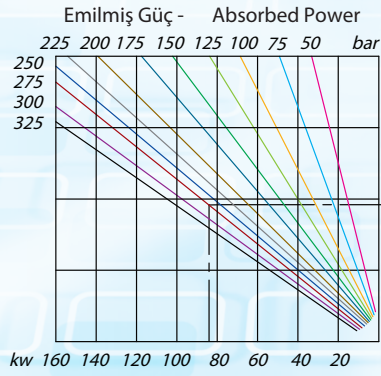
ŞAFT ÖZELLİKLERİ
SHAFT FEATURES

Giriş Basıncı Inlet Pressure	0.7 ÷ 1.5 bar
Çalışma Viskozite Seviyesi Operating Viscosity Range	-12 : 100 cSt
Sıvı Sıcaklığı °C (t) Fluid Temperature °C (t)	-10 _i +80 _j C

TAVSİYE EDİLEN FİLTRE (Geri Dönüş)
RECOMMENDED FILTER (Return Or Outlet)

Çalışma Basıncı Working Pressure	Kirlilik - Contamination NAS 1638 ISO 4406	Filtre- Filter βx=75
≤ 200 bar	12	21/18
≥ 200 bar	11	20/17

DİYAGRAMLAR- DIAGRAMS



TİP - TYPE		TANDEM 63	TANDEM 73	TANDEM 87	TANDEM 109	TANDEM 133	TANDEM 151
Yer Değiştirme Displacement	cm/n ³ cm/rev. ³	63.20	73.10	87.25	108.90	132.95	151.10
Maksimum Sürekli Çalışma Basıncı Max. Continuous Operating Pressure	bar	280	275	265	240	230	180
Max. Hız Max. Speed	min ⁻¹	2600	2600	2600	2600	2400	2400



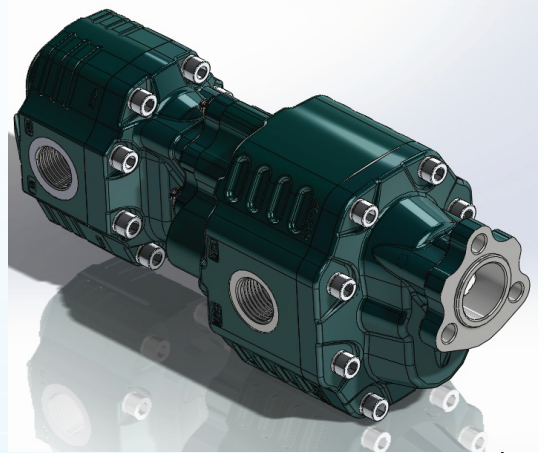
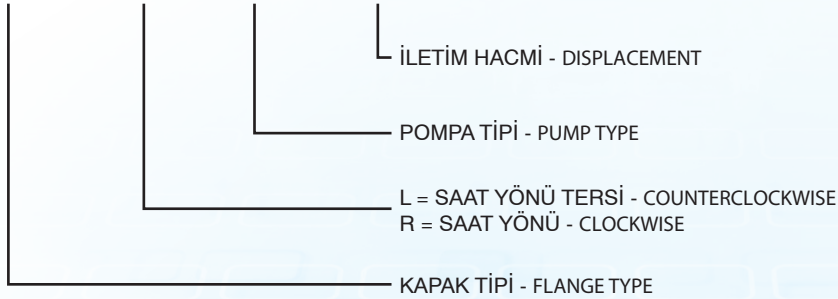
TANDEM DİŞLİ POMPA - TANDEM GEAR PUMP

UNI SERIE TANDEM

KODLAMA SİSTEMİ - CODE SYSTEMS

UNI 21-222

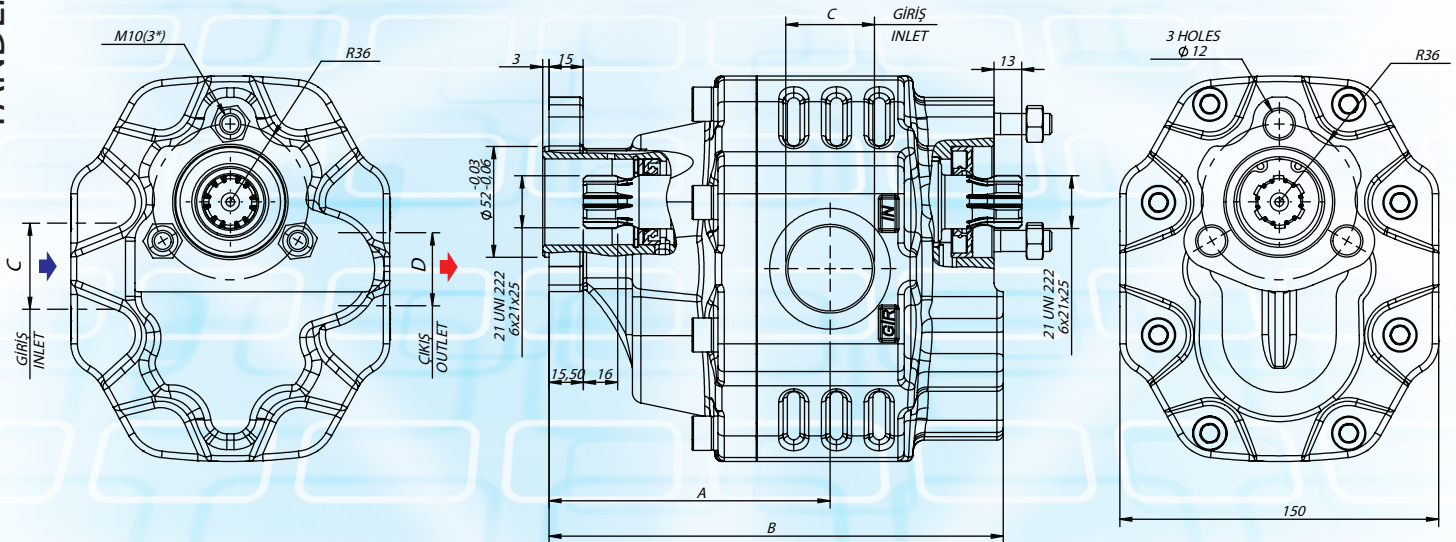
XXX - R(L) XXX - XX



Hidrolik pompa sembolü
Hydraulic pump symbol



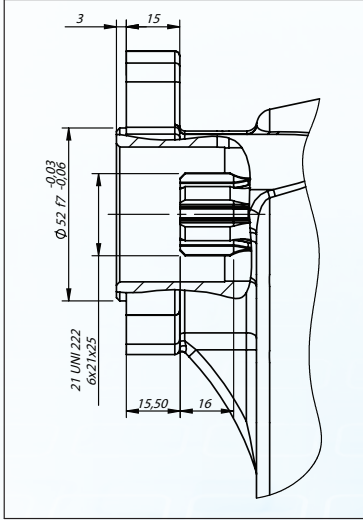
TANDEM SERIES



TEKNİK DATA - TECHNICAL DATA

TANDEM	Kod Code	İletim Hacmi Displacement cm ³ /rev	A mm	B mm	C GİRİŞ INLET	D ÇIKIŞ OUTLET
		UNI R (L) TANDEM-63	63.20	139	211	G1Ó
	UNI R (L) TANDEM-73	73.10	139	215	G1Ó	G3/4Ó
	UNI R (L) TANDEM-87	87.25	143	224	G1 1/4Ó	G1Ó
	UNI R (L) TANDEM-109	108.90	149	230	G1 1/4Ó	G1Ó
	UNI R (L) TANDEM-133	132.95	150	239.5	G1 1/2Ó	G1Ó
	UNI R (L) TANDEM-151	151.10	152.5	243	G1 1/2Ó	G1Ó

TEKNİKDATA - TECHNICAL DATA



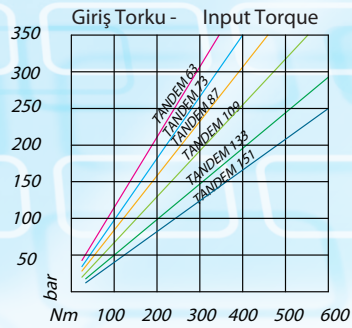
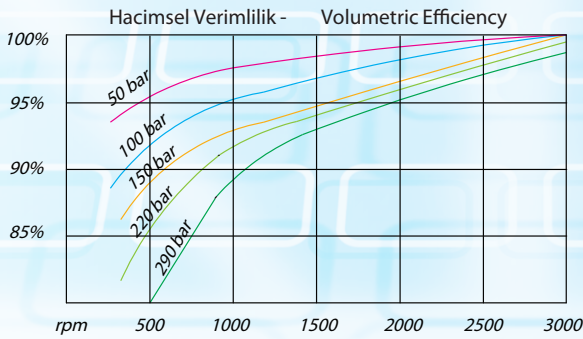
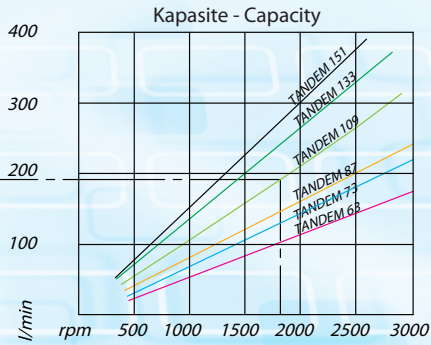
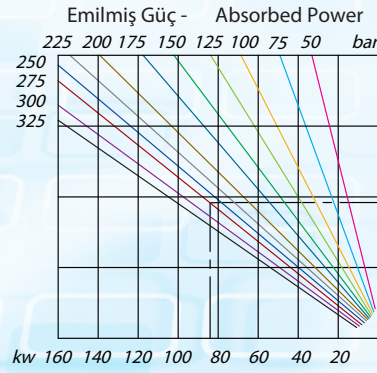
ŞAFT ÖZELLİKLERİ
SHAFT FEATURES

Giriş Basıncı Inlet Pressure	0.7 ÷ 1.5 bar
Çalışma Viskozite Seviyesi Operating Viscosity Range	-12 : 100 cSt
Sıvı Sıcaklığı °C (t) Fluid Temperature °C (t)	-10 _i +80 _j C

TAVSİYE EDİLEN FİLTRE (Geri Dönüş) RECOMMENDED FILTER (Return Or Outlet)

Çalışma Basıncı Working Pressure	Kirlilik - Contamination NAS 1638 ISO 4406	Filtre- Filter β _x =75
≤ 200 bar	12 21/18	40µm
≥ 200 bar	11 20/17	25µm

DİYAGRAMLAR- DIAGRAMS



TİP - TYPE		TANDEM 63	TANDEM 73	TANDEM 87	TANDEM 109	TANDEM 133	TANDEM 151
Yer Değiştirme Displacement	cm/n ³ cm/rev. ³	63.20	73.10	87.25	108.90	132.95	151.10
Maksimum Sürekli Çalışma Basıncı Max. Continuous Operating Pressure	bar	280	275	265	240	230	180
Max. Hız Max. Speed	min ⁻¹	2600	2600	2600	2600	2400	2400

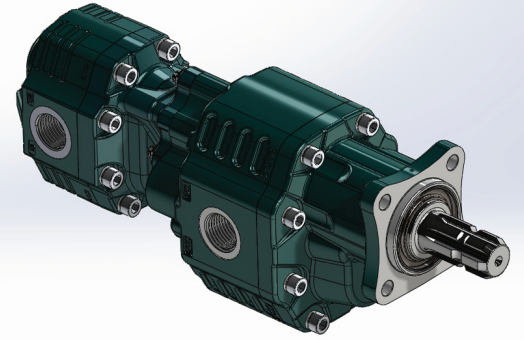
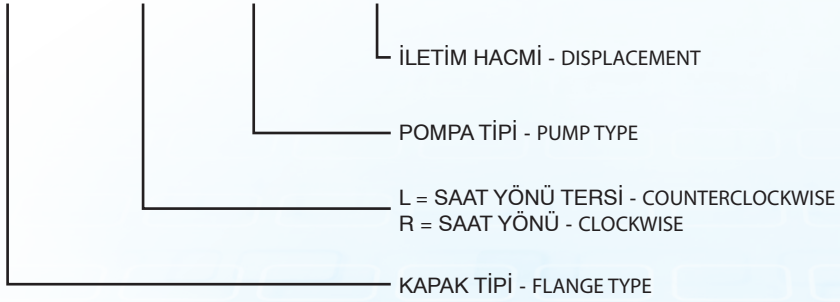
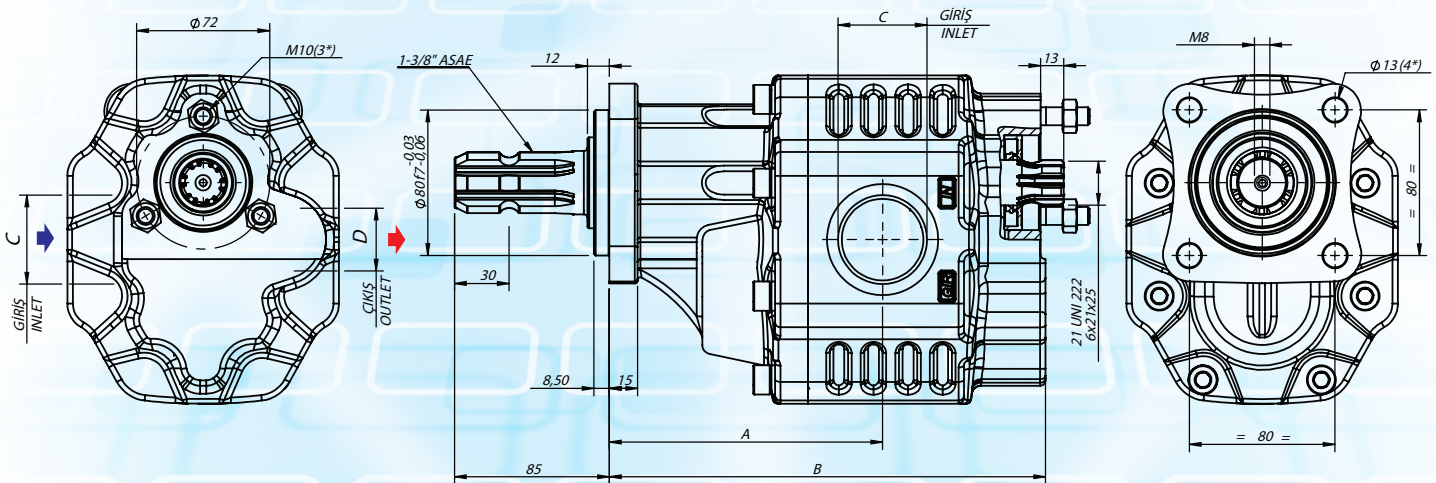
TANDEM DİŐLİ POMPA - TANDEM GEAR PUMP

ASEA SERIE TANDEM

KODLAMA SİSTEMİ - CODE SYSTEMS

ASEA 1-3/8"

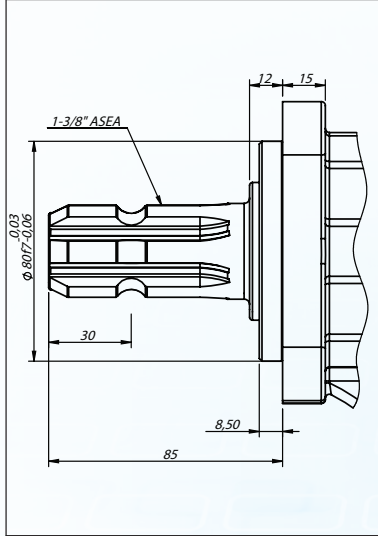
XXX - R(L) XXX - XX

Hidrolik pompa sembolü
Hydraulic pump symbol

TEKNİK DATA - TECHNICAL DATA

TANDEM	Kod Code	İletim Hacmi Displacement cm ³ /rev	A mm	B mm	C GİRİŐ INLET	D ÇIKIŐ OUTLET
		ASEA R(L) TANDEM-63	63.20	139	215	G1Ó
	ASEA R(L) TANDEM-73	73.10	139	219	G1Ó	G3/4Ó
	ASEA R(L) TANDEM-87	87.25	143	224	G1 1/4Ó	G1Ó
	ASEa R(L) TANDEM-109	108.90	149	230	G1 1/4Ó	G1Ó
	ASEA R(L) TANDEM-133	132.95	150	239.5	G1 1/2Ó	G1Ó
	ASEA R(L) TANDEM-151	151.10	152.5	247	G1 1/2Ó	G1Ó

TEKNİK DATA - TECHNICAL DATA



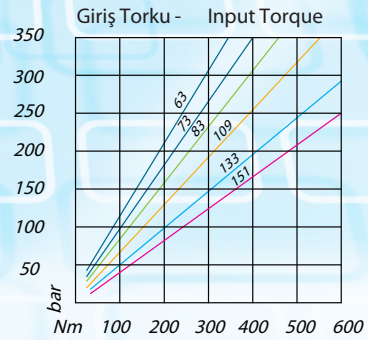
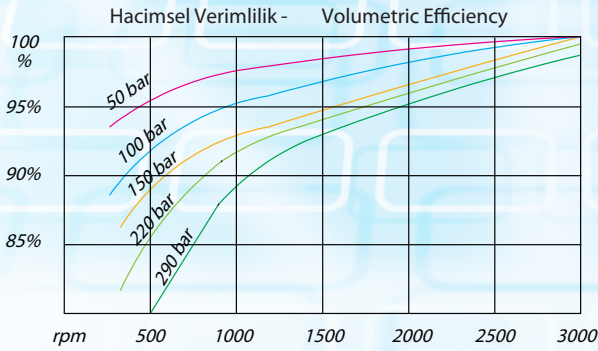
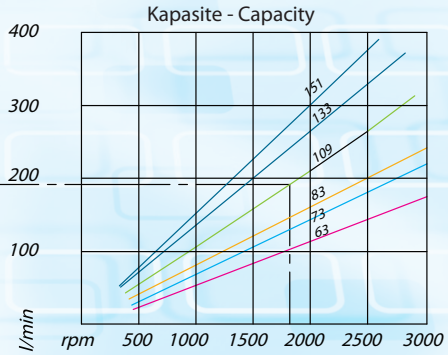
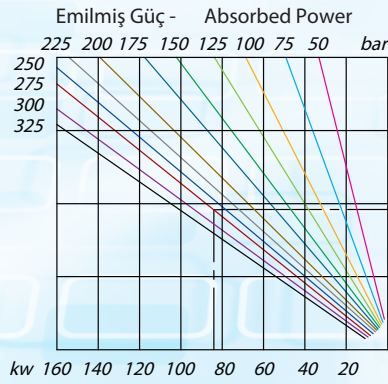
ŞAFT ÖZELLİKLERİ
SHAFT FEATURES

Giriş Basıncı Inlet Pressure	0.7 ÷ 1.5 bar
Çalışma Viskozite Seviyesi Operating Viscosity Range	-12 : 100 cSt
Sıvı Sıcaklığı °C (t) Fluid Temperature °C (t)	-10 _j +80 _j C

TAVSİYE EDİLEN FİLTRE (Geri Dönüş)
RECOMMENDED FILTER (Return Or Outlet)

Çalışma Basıncı Working Pressure	Kirlilik - Contamination NAS 1638 ISO 4406	Filtre- Filter βx=75
≤ 200 bar	12	21/18
≥ 200 bar	11	20/17

DİYAGRAMLAR- DIAGRAMS

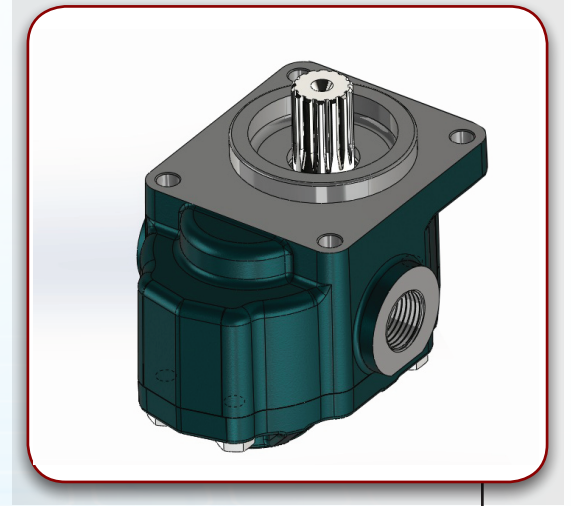


TİP - TYPE		TANDEM 63	TANDEM 73	TANDEM 87	TANDEM 109	TANDEM 133	TANDEM 151
Yer Değiştirme Displacement	cm/n ³ cm/rev. ³	63.20	73.10	87.25	108.90	132.95	151.10
Maksimum Sürekli Çalışma Basıncı Max. Continuous Operating Pressure	bar	280	275	265	240	230	180
Max. Hız Max. Speed	min ⁻¹	2600	2600	2600	2600	2400	2400

KAWASAKI B 70 İŞ MAKİNESİ YÜRÜTÜCÜ POMPASI
KAWASAKI B 70 WORKING MACHINE PROPELLENT PUMP

KAWASAKI

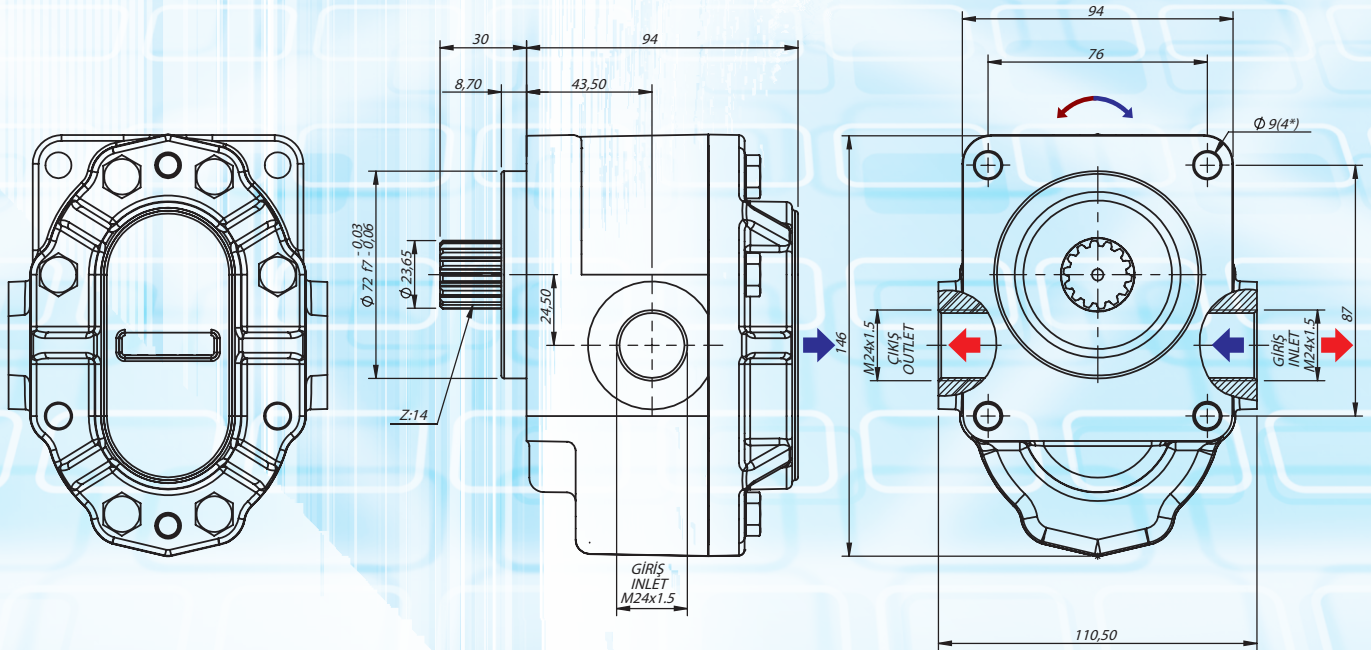
KODLAMA SİSTEMİ - CODE SYSTEMS **SERIE B-70**
XXX - XX - XXX



Hidrolik pompa sembolü
Hydraulic pump symbol



ÇİFT YÖNLÜ
BI-DIRECTIONAL



TEKNİK DATA - TECHNICAL DATA

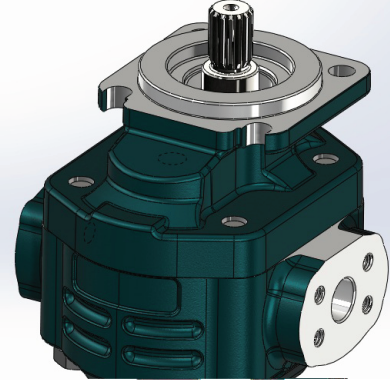
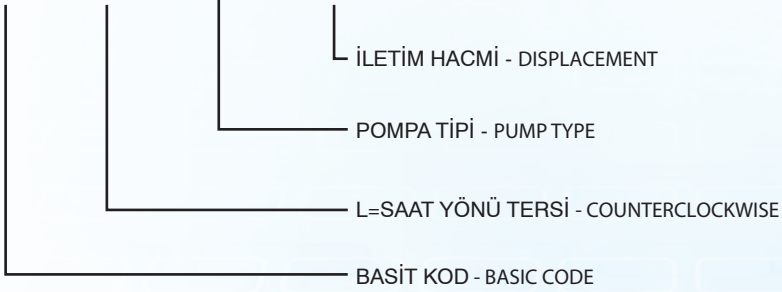
Kod Code	İletim Hacmi Displacement cm ³ /rev	Max. Sürekli Çalışma Basıncı Max. Continuous Operating Pressure	Max. Sürekli Hız Max. Continuous Speed	Min. Aralıklı Hız Min. Intermitt Speed	Ağırlık Weight (kg)
KVS 40	40	280	2500	450	6.2

KAWASAKI B 70 İŞ MAKİNESİ POMPASI
KAWASAKI B 70 WORKING MACHINE MAIN PUMP

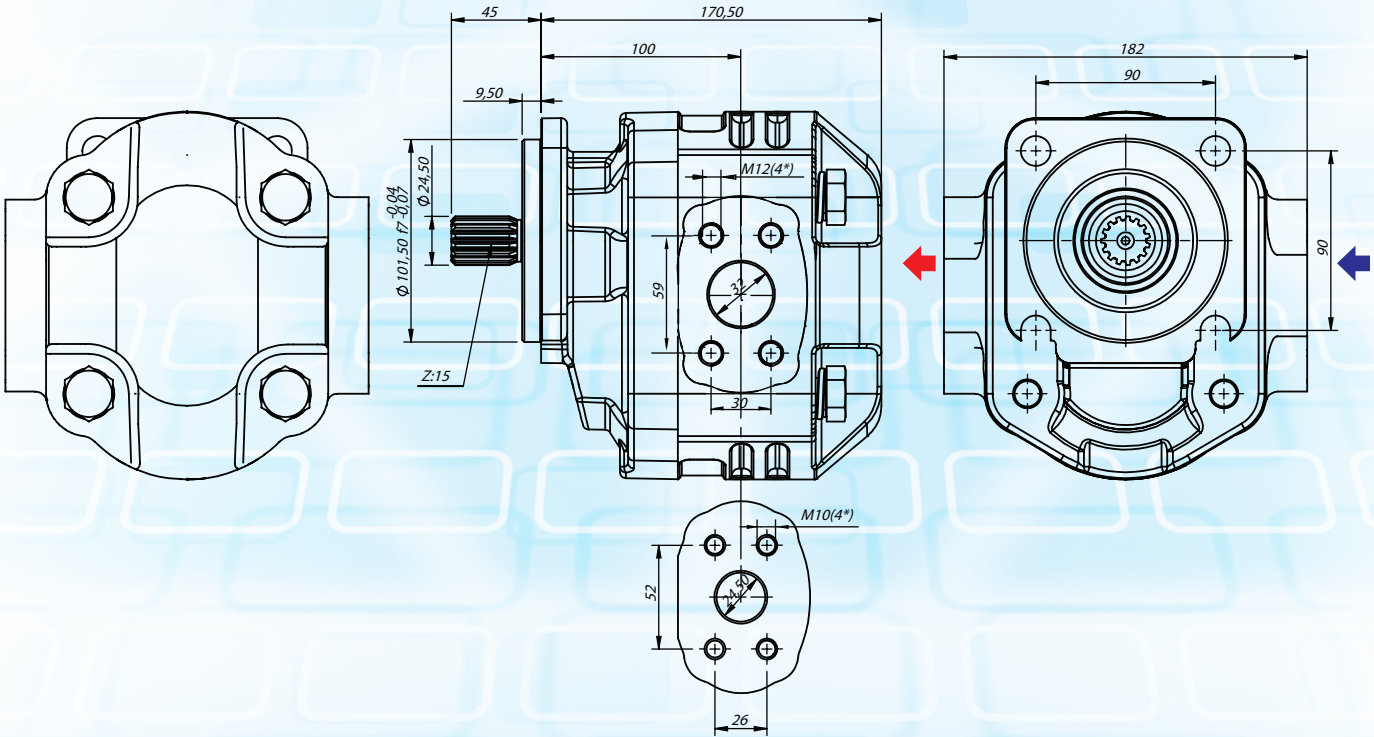
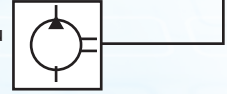
KAWASAKI
SERIE B-70

KODLAMA SİSTEMİ - CODE SYSTEMS

XXX - L - XXX - XX



Hidrolik pompa sembolü
Hydraulic pump symbol



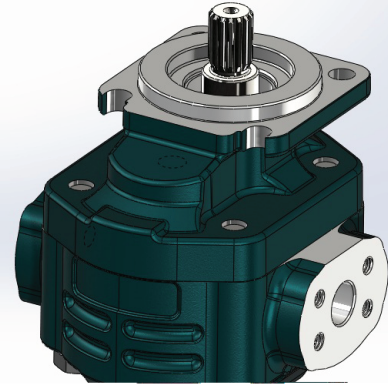
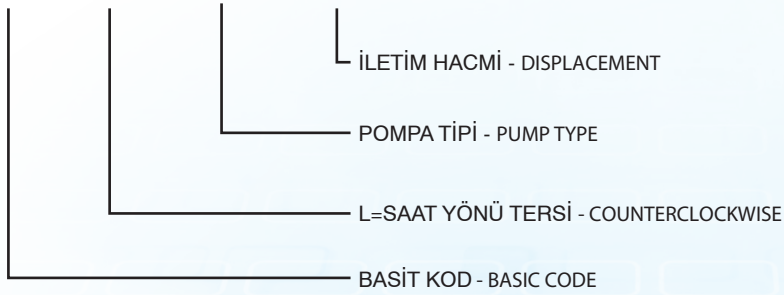
TEKNİK DATA - TECHNICAL DATA

Kod Code	İletim Hacmi Displacement cm ³ /rev	Max. Sürekli Çalışma Basıncı Max. Continuous Operating Pressure	Max. Sürekli Hız Max. Continuous Speed	Min. Aralıklı Hız Min. Intermitt Speed	Ağırlık Weight (kg)
(L)-KVO 55	55	230	1500	250	17

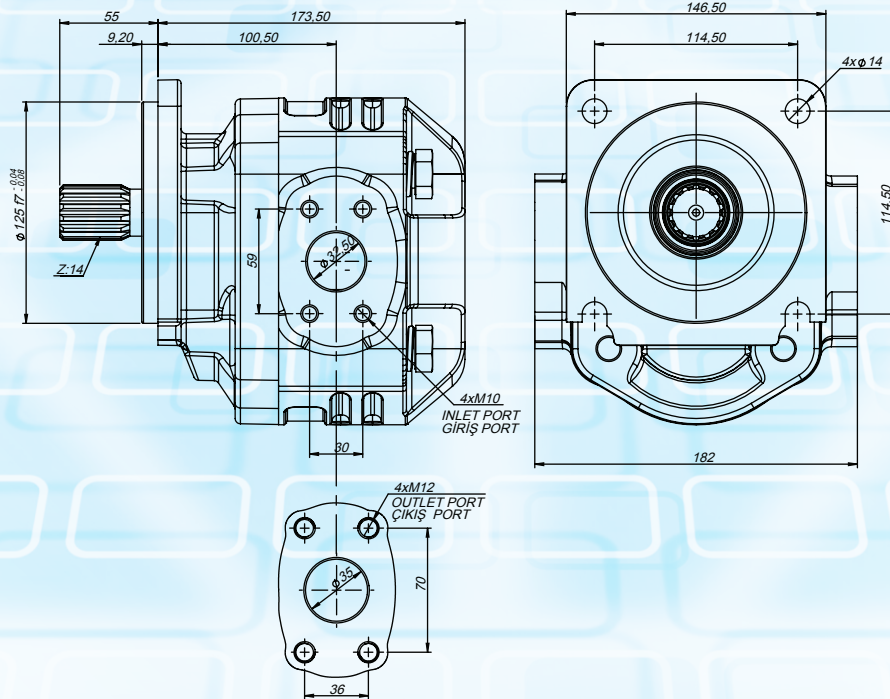
KAWASAKI B 70 İŞ MAKİNESİ POMPASI
KAWASAKI B 70 WORKING MACHINE MAIN PUMP

KAWASAKI

KODLAMA SİSTEMİ - CODE SYSTEMS **SERIE B-70**
XXX - L - XXX - XX



Hidrolik pompa sembolü
Hydraulic pump symbol



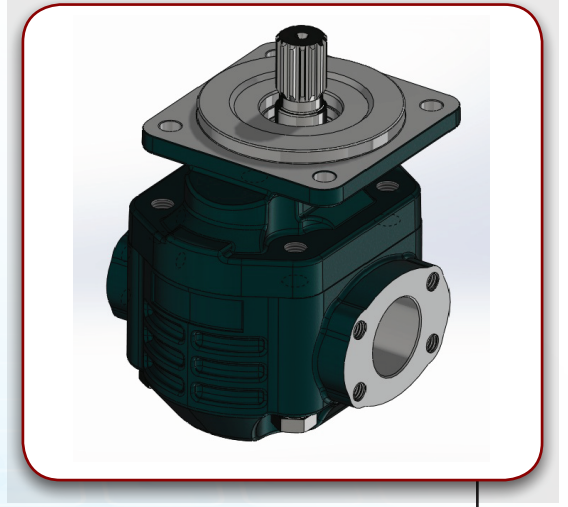
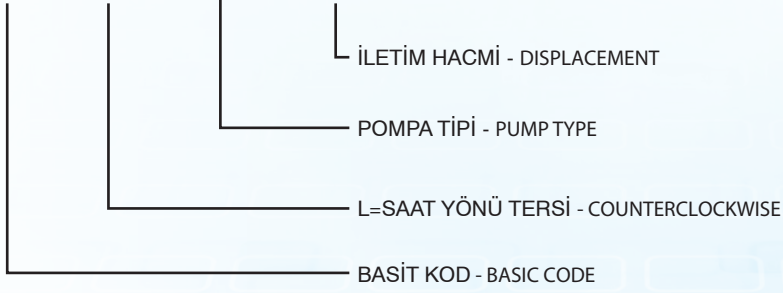
TEKNİK DATA - TECHNICAL DATA

Kod Code	İletim Hacmi Displacement cm ³ /rev	Max. Sürekli Çalışma Basıncı Max. Continuous Operating Pressure	Max. Sürekli Hız Max. Continuous Speed	Min. Aralıklı Hız Min. Intermitt Speed
KVD 80	81.10	230	1500	250

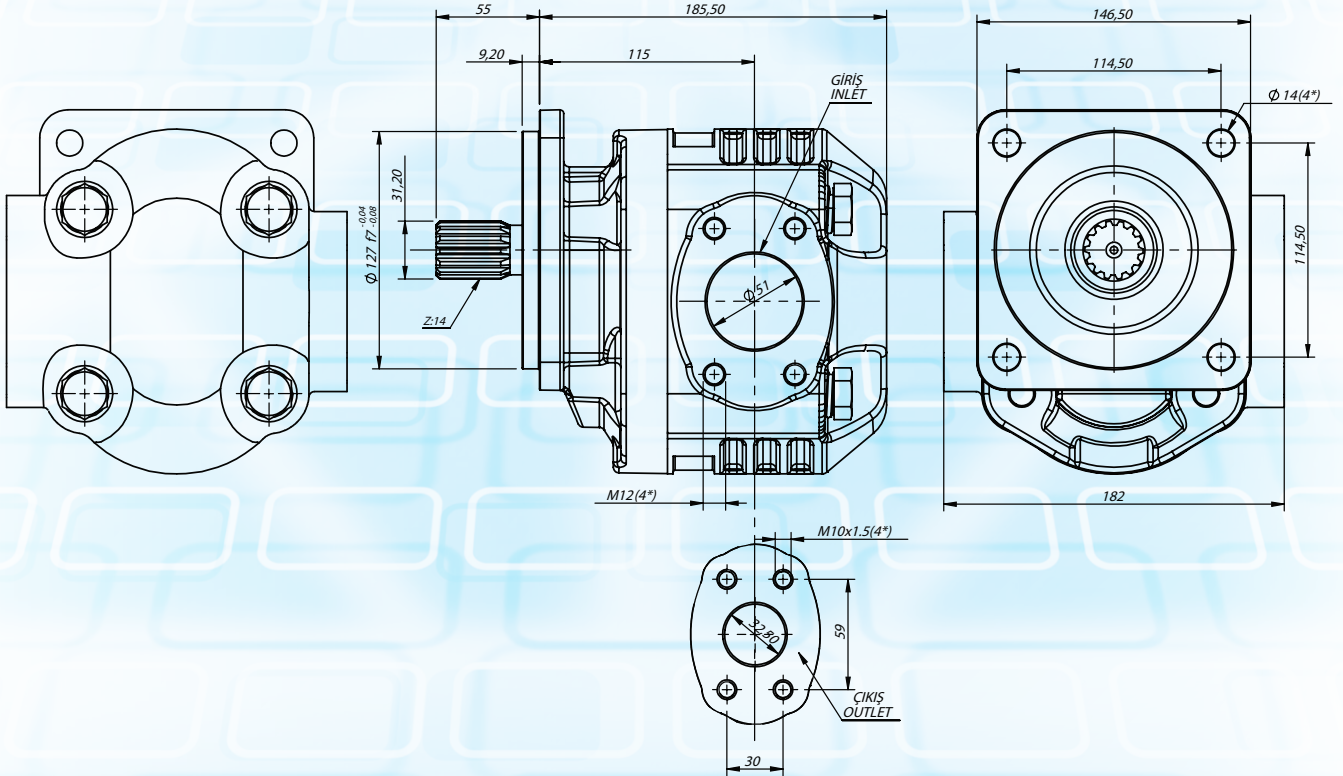
KAWASAKI B 70 İŞ MAKİNESİ POMPASI
KAWASAKI B 70 WORKING MACHINE MAIN PUMP

KAWASAKİ

KODLAMA SİSTEMİ - CODE SYSTEMS **SERIE B-70**
XXX - L - XXX - XX



Hidrolik pompa sembolü
Hydraulic pump symbol



TEKNİK DATA - TECHNICAL DATA

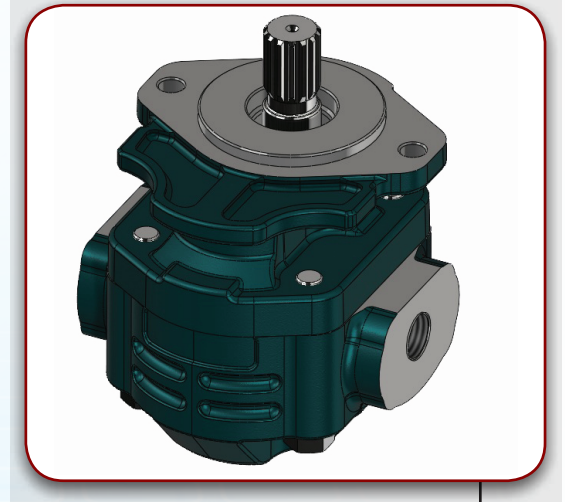
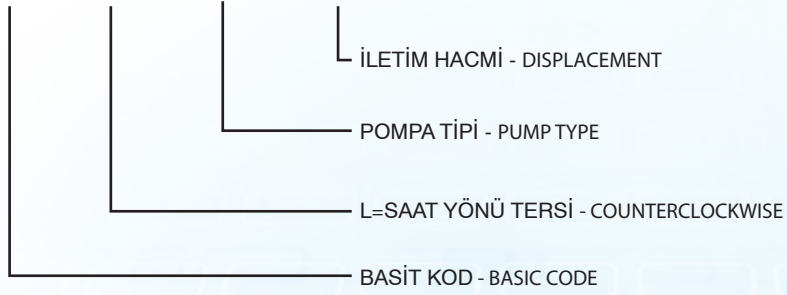
Kod Code	İletim Hacmi Displacement cm ³ /rev	Max. Sürekli Çalışma Basıncı Max. Continuous Operating Pressure	Max. Sürekli Hız Max. Continuous Speed	Min. Aralıklı Hız Min. Intermitt Speed	Ağırlık Weight (kg)
KVB 110	110	230	1500	250	25

KAWASAKI B 70 İŞ MAKİNESİ POMPASI
KAWASAKI B 70 WORKING MACHINE MAIN PUMP

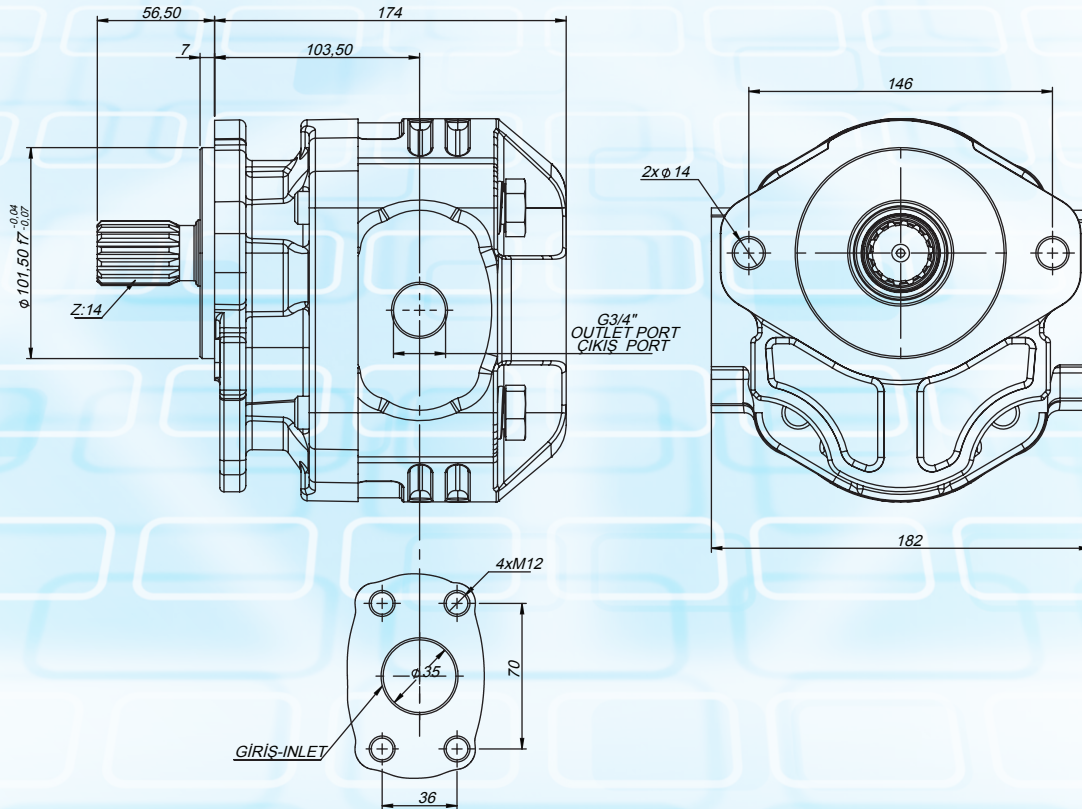
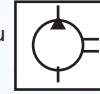
KAWASAKI
SERIE B-70

KODLAMA SİSTEMİ - CODE SYSTEMS

XXX - L - XXX - XX



Hidrolik pompa sembolü
Hydraulic pump symbol



TEKNİK DATA - TECHNICAL DATA

Kod Code	İletim Hacmi Displacement cm ³ /rev	Max. Sürekli Çalışma Basıncı Max. Continuous Operating Pressure	Max. Sürekli Hız Max. Continuous Speed	Min. Aralıklı Hız Min. Intermitt Speed
KVC-55	55	230	1500	250

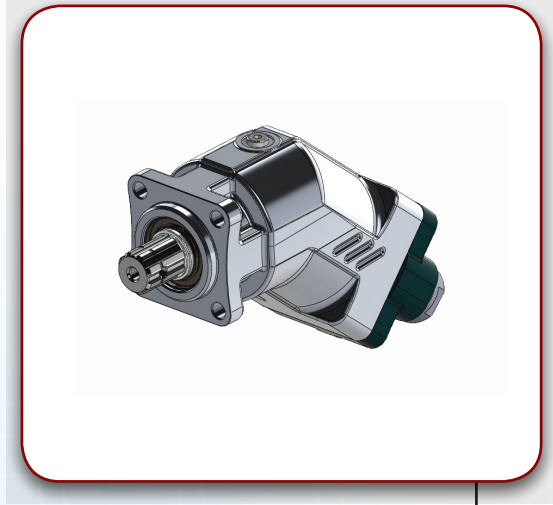
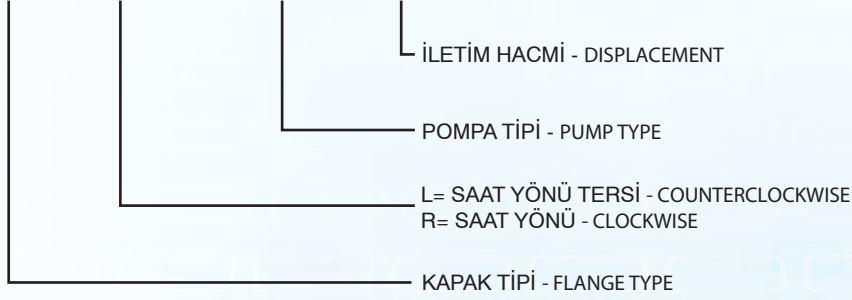
REXROTH TYPE BENT AXIS PISTON PUMP SERIE
22-33 LITERS

ISO SERIE 22-33

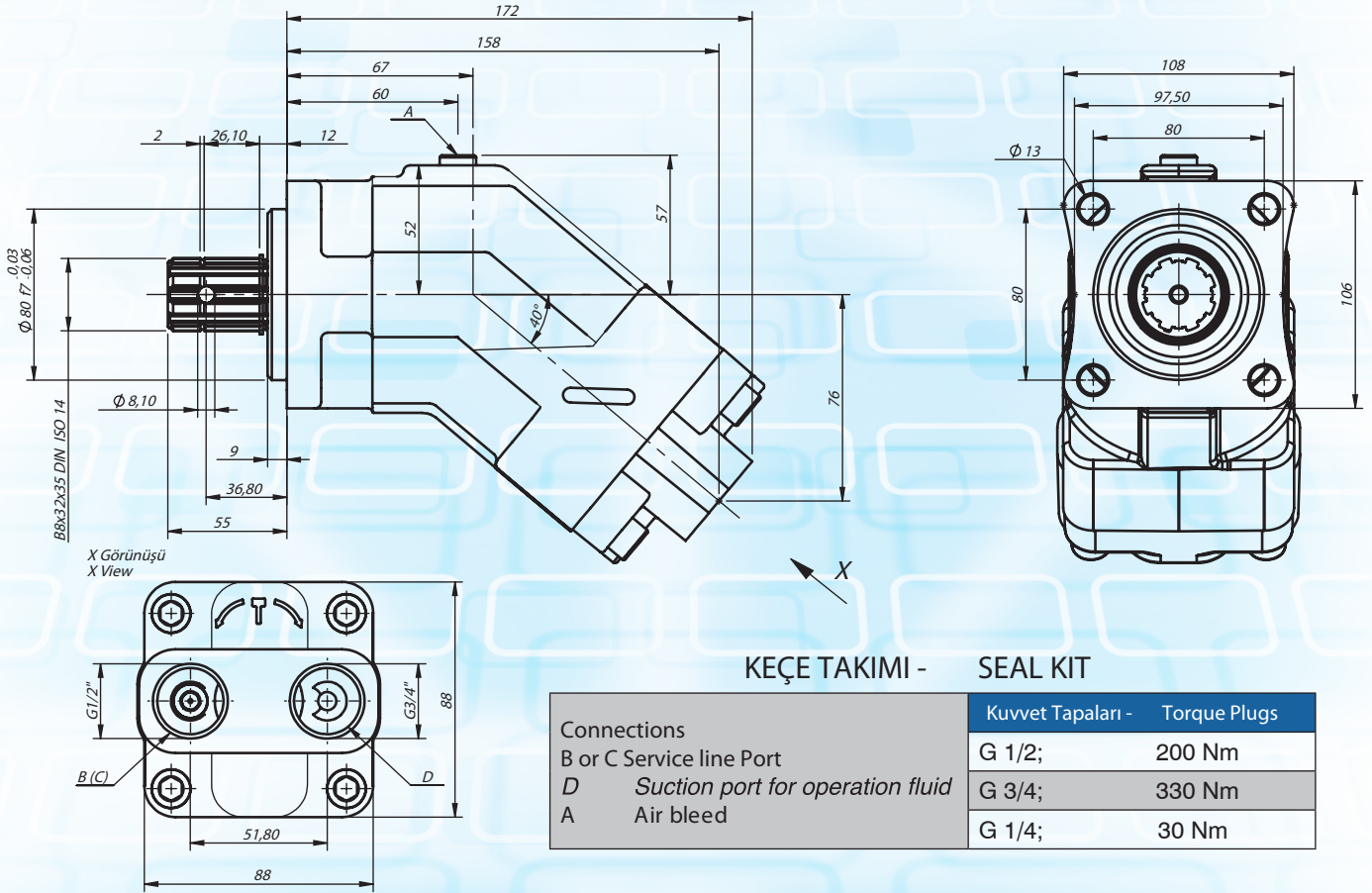
KODLAMA SİSTEMİ - CODE SYSTEMS

DIN 5462

XXX - R(L) - XXX - XX



Hidrolik pompa sembolü
Hydraulic pump symbol



TEKNİK DATA - TECHNICAL DATA

Kod Code	İletim Hacmi Displacement cm ³ /rev	Normal Basınç Nominal Pressure (bar)	Zirve Basınç Peak Pressure (bar)	Max. Hız Max. Speed min ⁻¹	Ağırlık Weight kg
ISO R (L) 22	21.9	300	350	2920	5.8
ISO R (L) 33	32.9	300	350	2890	5.8

REXROTH TYPE BENT AXIS PISTON PUMP SERIE
45 LITERS

ISO SERIE 45

KODLAMA SİSTEMİ - CODE SYSTEMS

DIN 5462

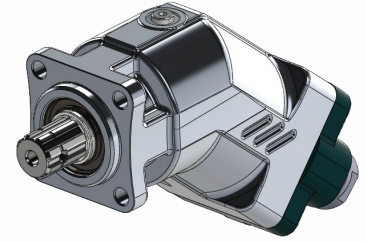
XXX - R(L) - XXX - XX

İLETİM HACMİ - DISPLACEMENT

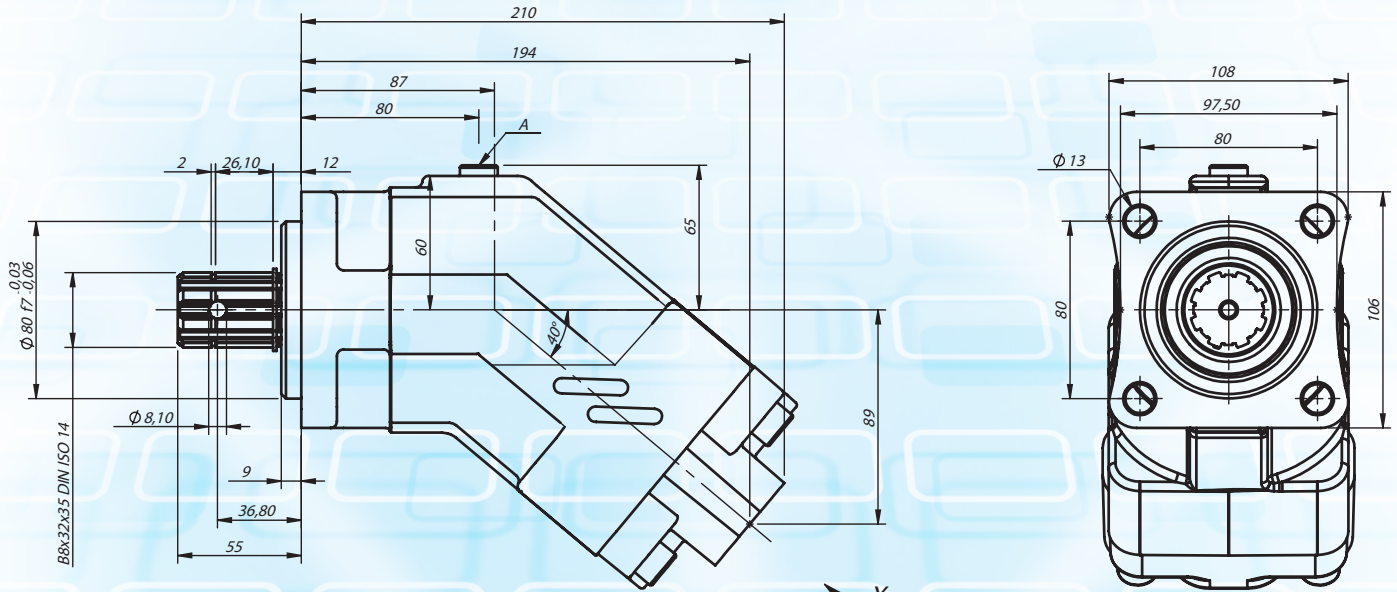
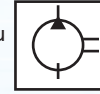
POMPA TİPİ - PUMP TYPE

L= SAAT YÖNÜ TERSİ - COUNTERCLOCKWISE
R= SAAT YÖNÜ - CLOCKWISE

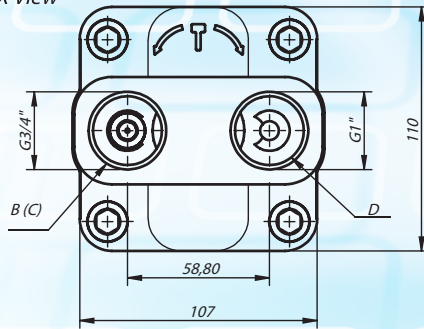
KAPAK TİPİ - FLANGE TYPE



Hidrolik pompa sembolü
Hydraulic pump symbol



X Görünüşü
X View



KEÇE TAKIMI - SEAL KIT

Connections
B or C Service line Port
D Suction port for operation fluid
A Air bleed

Kuvvet Tapaları - Torque Plugs	
G 3/4;	330 Nm
G 1;	480 Nm
G 1/4;	30 Nm

TEKNİK DATA - TECHNICAL DATA

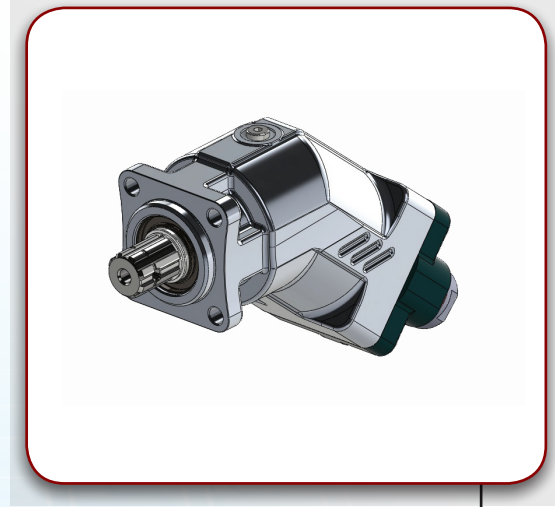
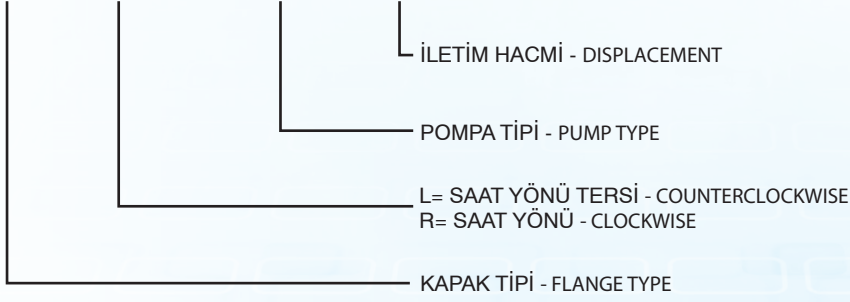
Kod Code	İletim Hacmi Displacement cm ³ /rev	Normal Basınç Nominal Pressure (bar)	Zirve Basınç Peak Pressure (bar)	Max. Hız Max. Speed min ⁻¹	Ağırlık Weight kg
ISO R (L) 45	45.6	300	350	2550	8

REXROTH TYPE BENT AXIS PISTON PUMP SERIE
65 LITERS

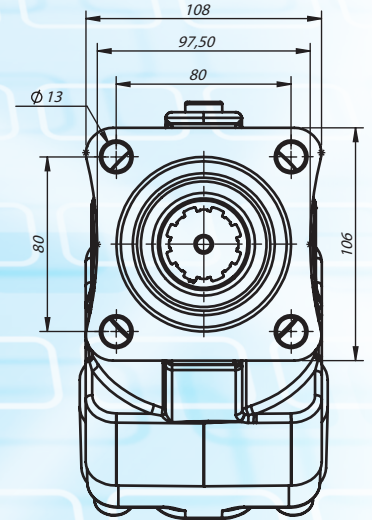
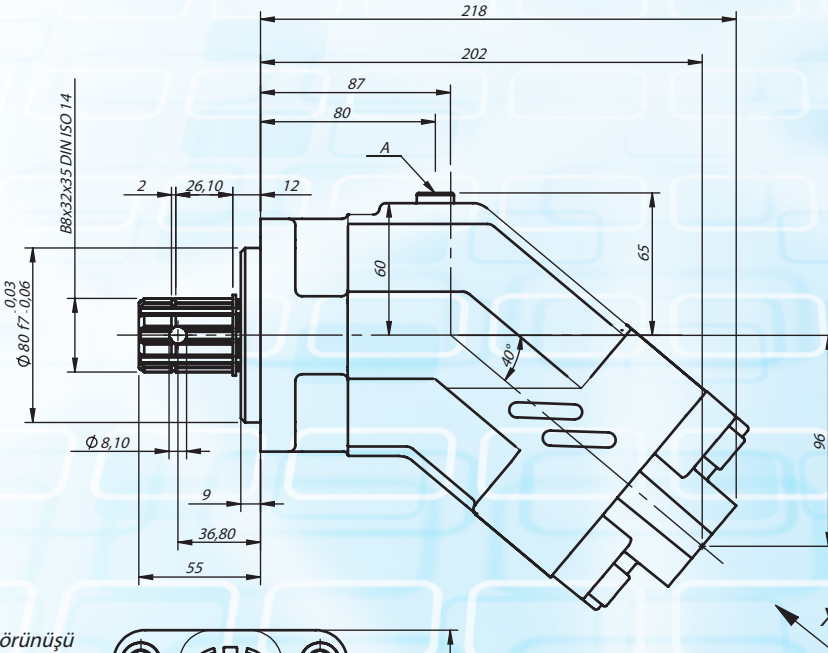
ISO SERIE 65

KODLAMA SİSTEMİ - CODE SYSTEMS
XXX - R(L) - XXX - XX

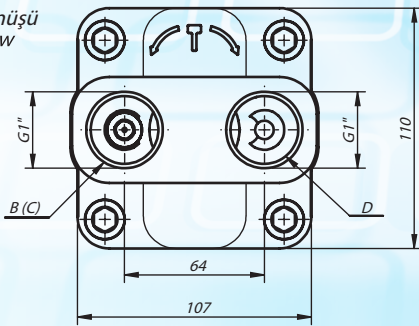
DIN 5462



Hidrolik pompa sembolü
Hydraulic pump symbol



X Görünüşü
X View



KEÇE TAKIMI - SEAL KIT

Connections	Kuvvet Tapaları - Torque Plugs
B or C Service line Port	G 1; 480 Nm
D Suction port for operation fluid	G 1; 480 Nm
A Air bleed	G 1/4; 30 Nm

TEKNİK DATA - TECHNICAL DATA

Kod Code	İletim Hacmi Displacement cm ³ /rev	Normal Basınç Nominal Pressure (bar)	Zirve Basınç Peak Pressure (bar)	Max. Hız Max. Speed min ⁻¹	Ağırlık Weight kg
ISO R (L) 65	64.50	300	350	2300	9

REXROTH TYPE BENT AXIS PISTON PUMP SERIE
80-90 LITERS

ISO SERIE 80-90

KODLAMA SİSTEMİ - CODE SYSTEMS

DIN 5462

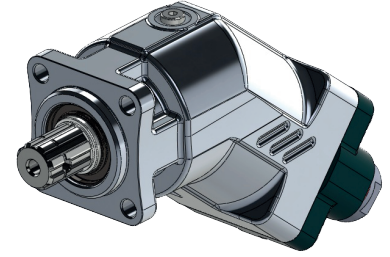
XXX - R(L) - XXX - XX

İLETİM HACMİ - DISPLACEMENT

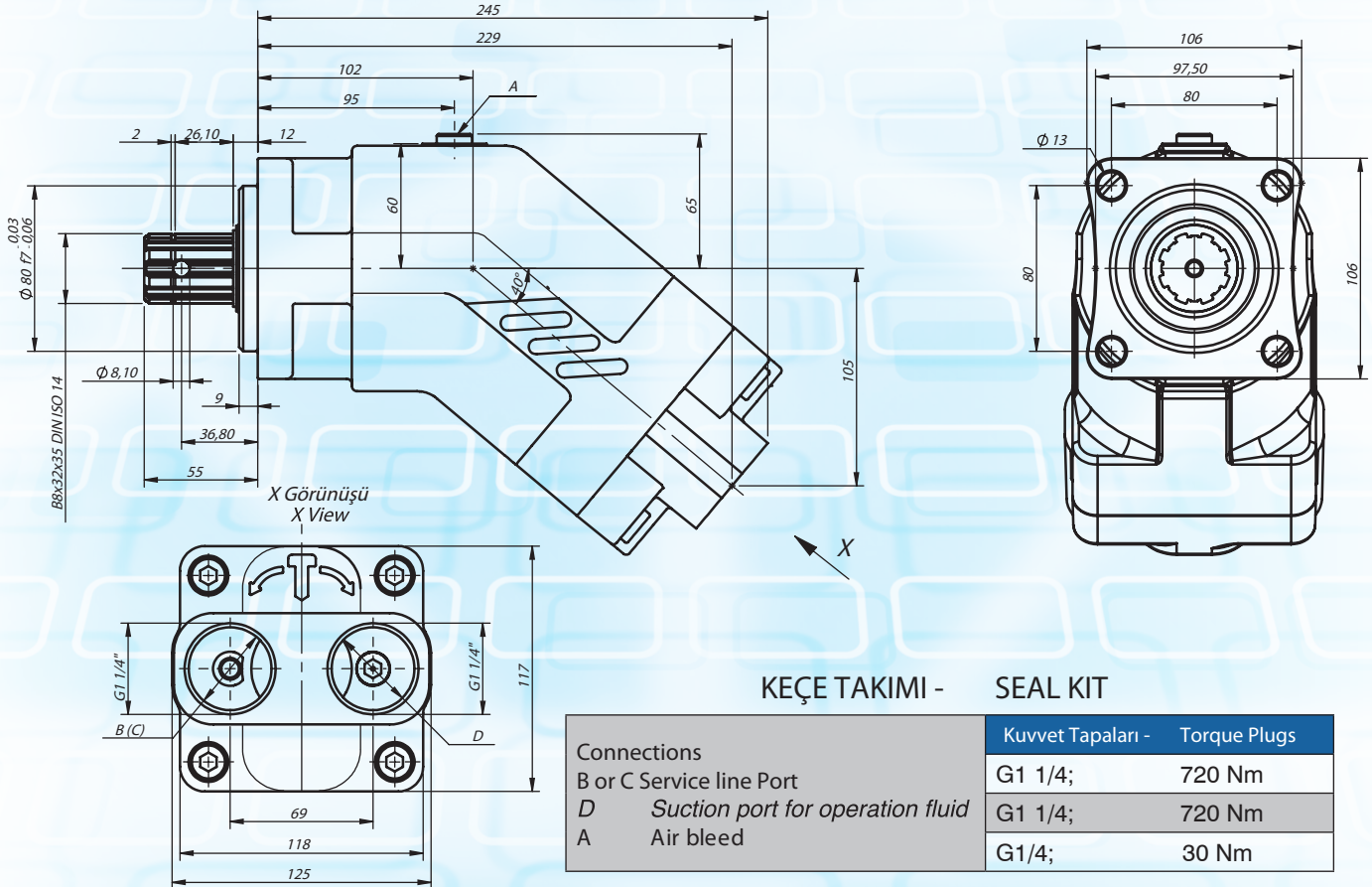
POMPA TİPİ - PUMP TYPE

L= SAAT YÖNÜ TERSİ - COUNTERCLOCKWISE
R= SAAT YÖNÜ - CLOCKWISE

KAPAK TİPİ - FLANGE TYPE



Hidrolik pompa sembolü
Hydraulic pump symbol



TEKNİK DATA - TECHNICAL DATA

Kod Code	İletim Hacmi Displacement cm ³ /rev	Normal Basınç Nominal Pressure (bar)	Zirve Basınç Peak Pressure (bar)	Max. Hız Max. Speed min ⁻¹	Ağırlık Weight kg
ISO R (L) 80	80.4	300	350	2135	12
ISO R (L) 90	90.7	300	350	2050	12

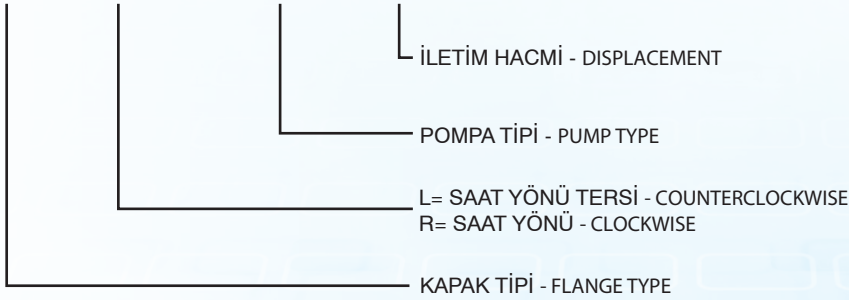
REXROTH TYPE BENT AXIS PISTON PUMP SERIE
107-125 LITERS

ISO SERIE 107-125

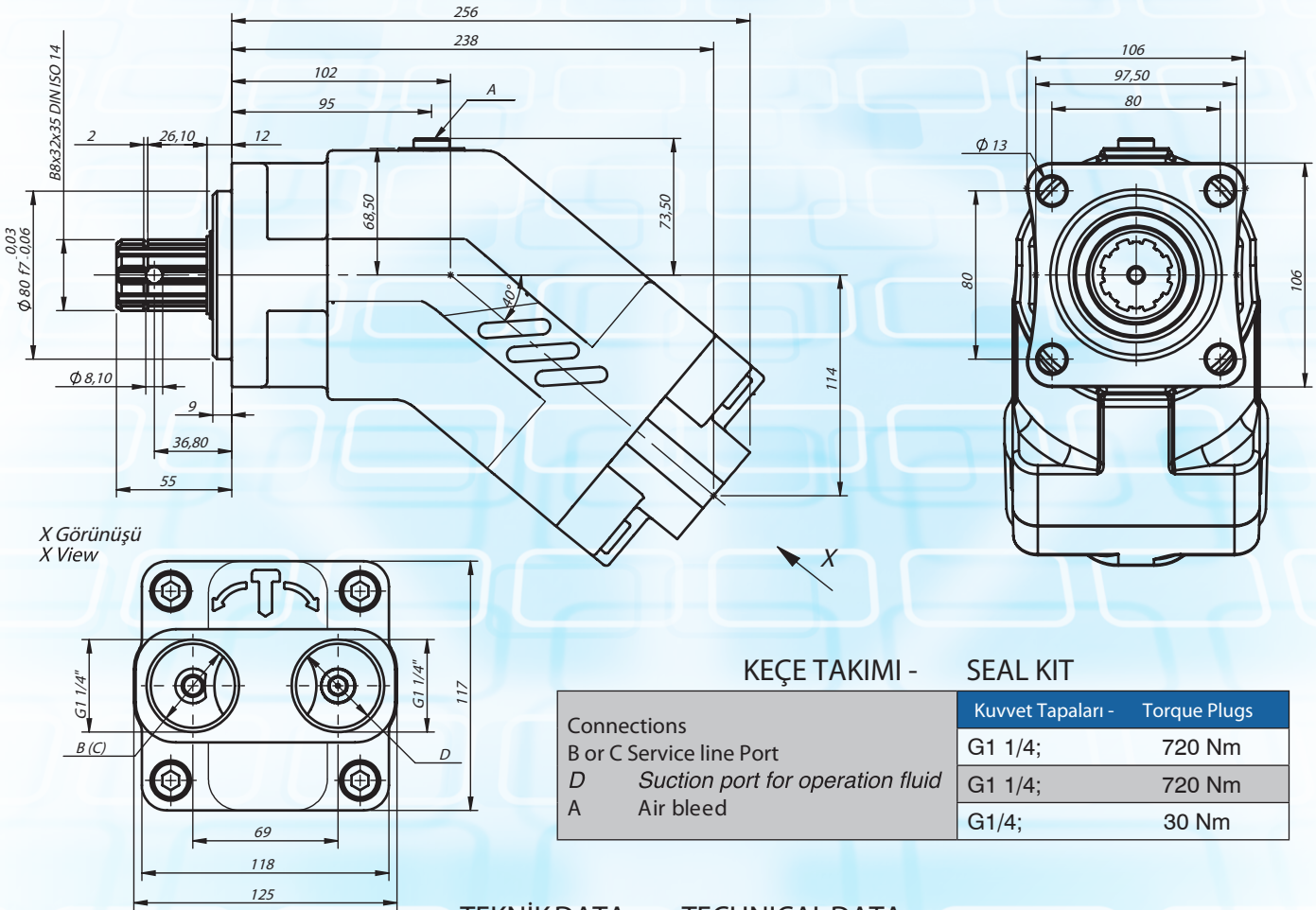
KODLAMA SİSTEMİ - CODE SYSTEMS

DIN 5462

XXX - R(L) - XXX - XX

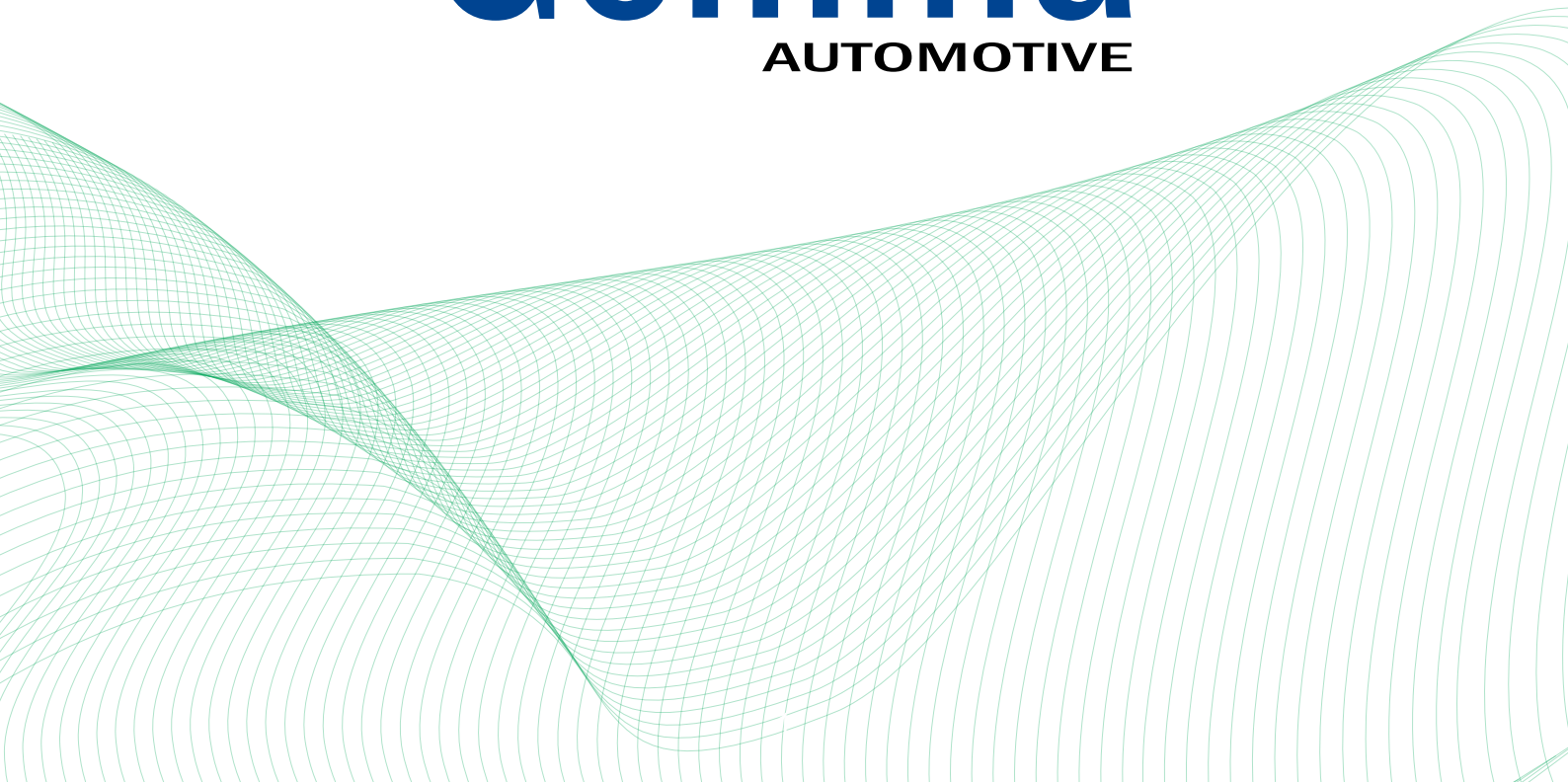


Hidrolik pompa sembolü
Hydraulic pump symbol



TEKNİK DATA - TECHNICAL DATA

Kod Code	İletim Hacmi Displacement cm ³ /rev	Normal Basınç Nominal Pressure (bar)	Zirve Basınç Peak Pressure (bar)	Max. Hız Max. Speed min ⁻¹	Ağırlık Weight kg
ISO R (L) 107	106.7	300	350	1850	14.5
ISO R (L) 125	124.5	250	300	1790	14.5



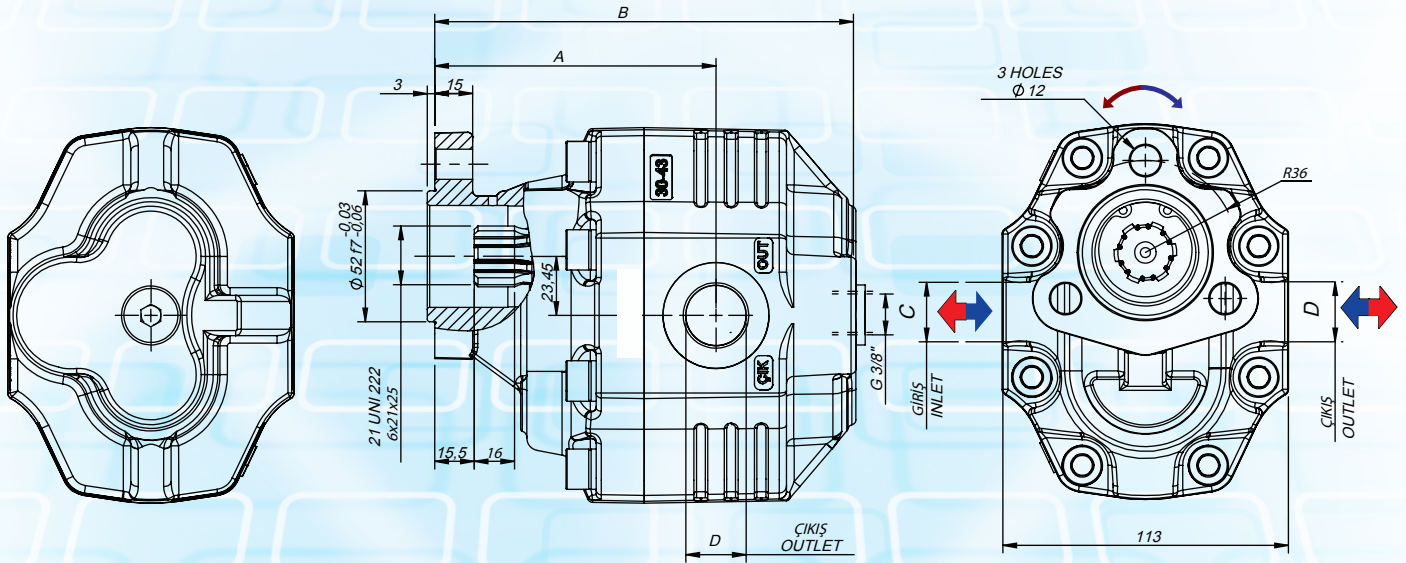
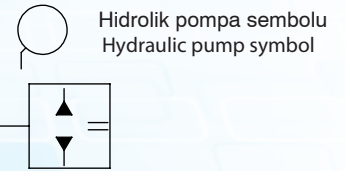
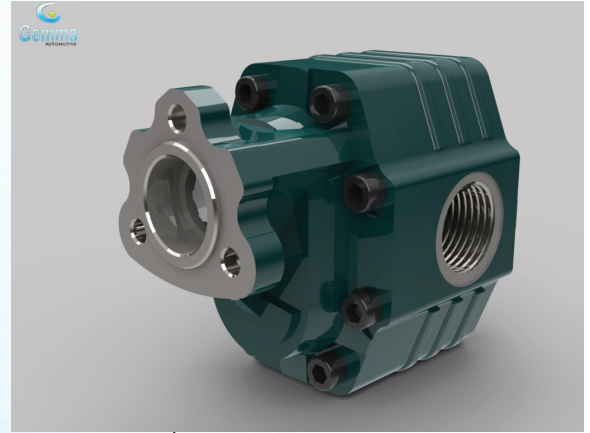
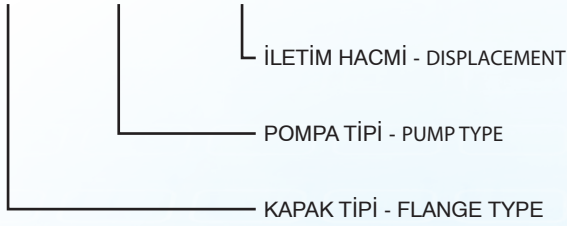
HYDRAULIC MOTOR 30 SERIES

UNI SERIE

KODLAMA SİSTEMİ - CODE SYSTEMS

UNI 21-222

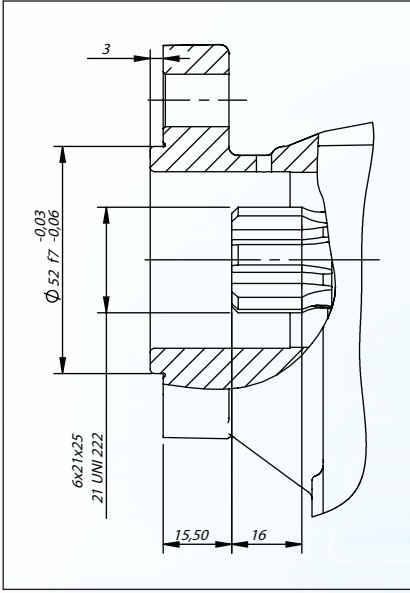
XXX - XX - XXX



TEKNİK DATA - TECHNICAL DATA

Kod Code	İletim Hacmi Displacement cm^3/rev	A mm	B mm	C GİRİŞ INLET	D ÇIKIŞ OUTLET	AĞIRLIK WEIGHT kg
UNI 27 BDM	27	108	159	G3/4Ó	G3/4Ó	9
UNI 34 BDM	34	108	159	G3/4Ó	G3/4Ó	9.5
UNI 43 BDM	43	114.50	170	G1Ó	G1Ó	10
UNI 51 BDM	51	116	175	G1Ó	G1Ó	10.5
UNI 61 BDM	61	120	183	G1Ó	G1Ó	11
UNI 82 BDM	82	125	194	G1 1/4Ó	G1 1/4Ó	11.5

TEKNİK DATA - TECHNICAL DATA



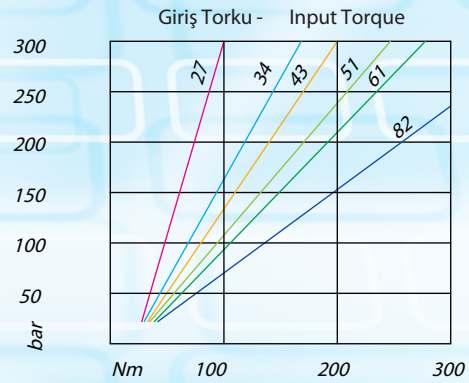
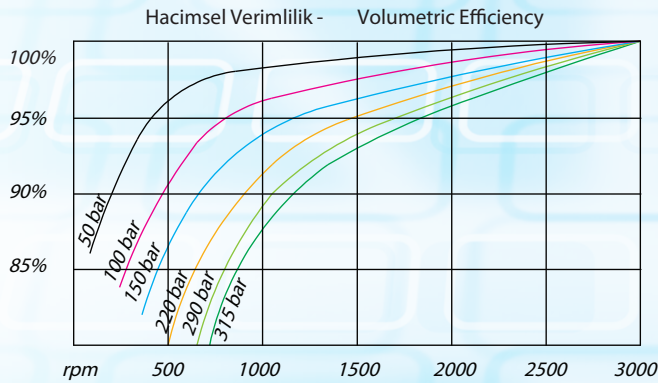
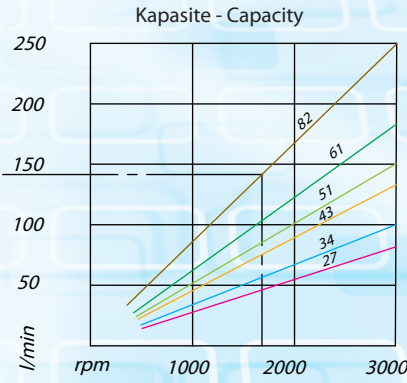
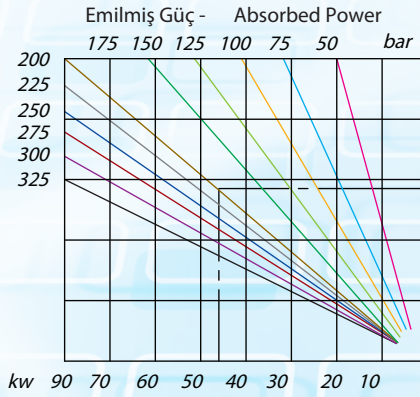
ŞAFT ÖZELLİKLERİ
SHAFT FEATURES

Giriş Basıncı Inlet Pressure	0.7 ÷ 1.5 bar
Çalışma Viskozite Seviyesi Operating Viscosity Range	-12 : 100 cSt
Sıvı Sıcaklığı °C (t) Fluid Temperature °C (t)	-10 _i +80 _j C

TAVSİYE EDİLEN FİLTRE (Geri Dönüş)
RECOMMENDED FILTER (Return Or Outlet)

Çalışma Basıncı Working Pressure	Kirlilik - Contamination NAS 1638 ISO 4406	Filtre - Filter β _x =75
≤ 200 bar	12	21/18
≥ 200 bar	11	20/17

DİYAGRAMLAR- DIAGRAMS



TİP - TYPE		27	34	43	51	61	82
Yer Değişirme Displacement	cm/n ³ cm/rev. ³	27.30	33.80	43.80	51.73	61.95	82.13
Maksimum Sürekli Çalışma Basıncı Max. Continuous Operating Pressure	bar	300	285	280	230	225	200
Max. Hız Max. Speed	min ⁻¹	2800	2600	2300	2300	1900	1700

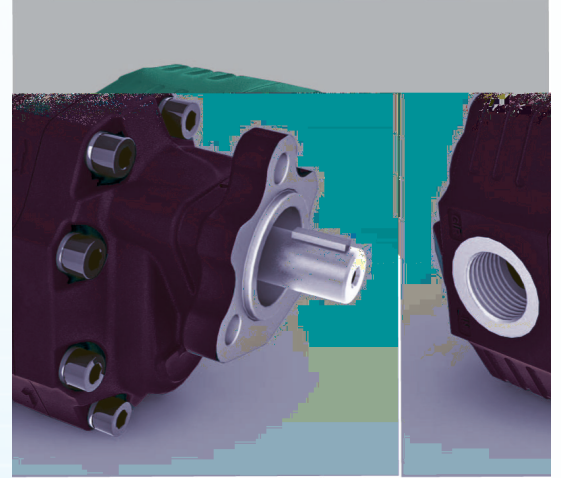
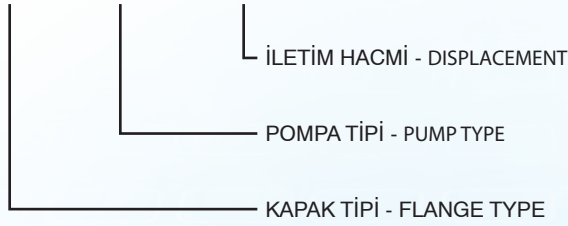
HYDRAULIC MOTOR 30 SERIES

UNI SERIE

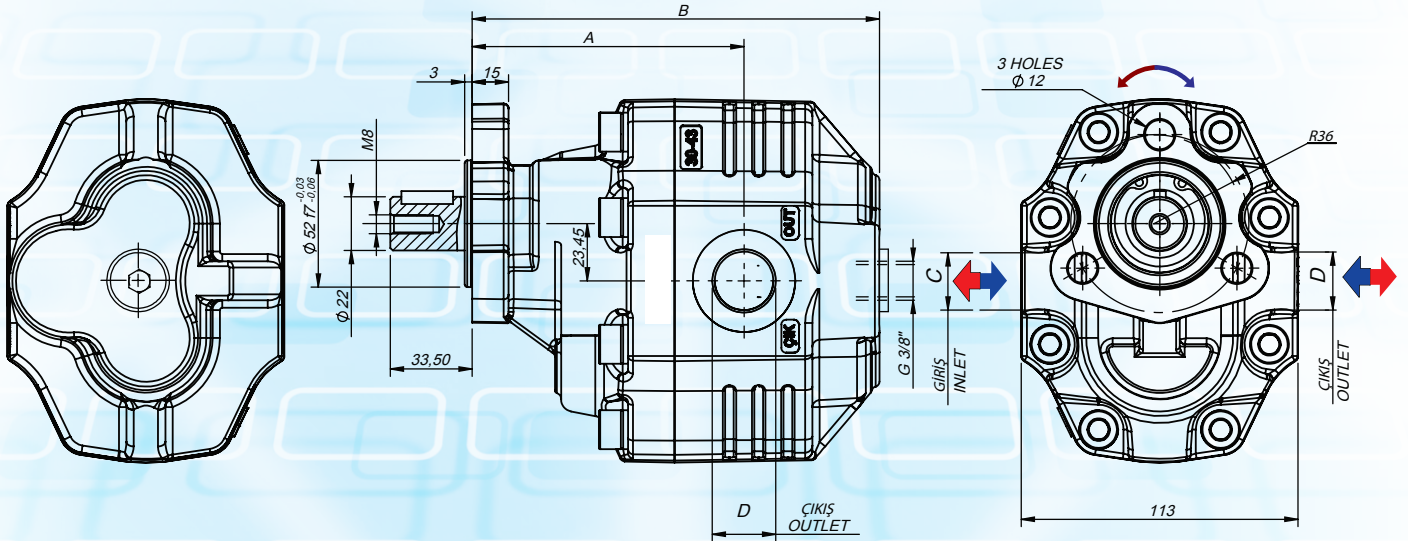
KODLAMA SİSTEMİ - CODE SYSTEMS

XXX - XX - XXX

UNI 21-222



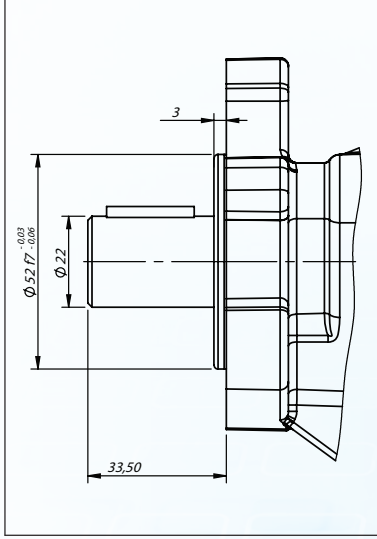
Hidrolik pompa sembolü
Hydraulic pump symbol



TEKNİK DATA - TECHNICAL DATA

Kod Code	İletim Hacmi Displacement cm ³ / rev	A mm	B mm	C GİRİŞ INLET	D ÇIKIŞ OUTLET	AĞIRLIK WEIGHT kg
UNI 27 BDM	27	108	159	G3/4Ó	G3/4Ó	9
UNI 34 BDM	34	108	159	G3/4Ó	G3/4Ó	9.5
UNI 43 BDM	43	114.50	170	G1Ó	G1Ó	10
UNI 51 BDM	51	116	175	G1Ó	G1Ó	10.5
UNI 61 BDM	61	120	183	G1Ó	G1Ó	11
UNI 82 BDM	82	125	194	G1 1/4Ó	G1 1/4Ó	11.5

TEKNİK DATA - TECHNICAL DATA



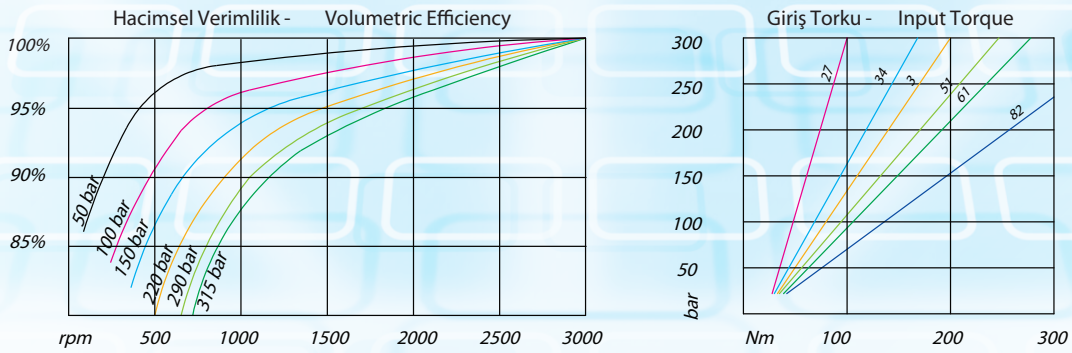
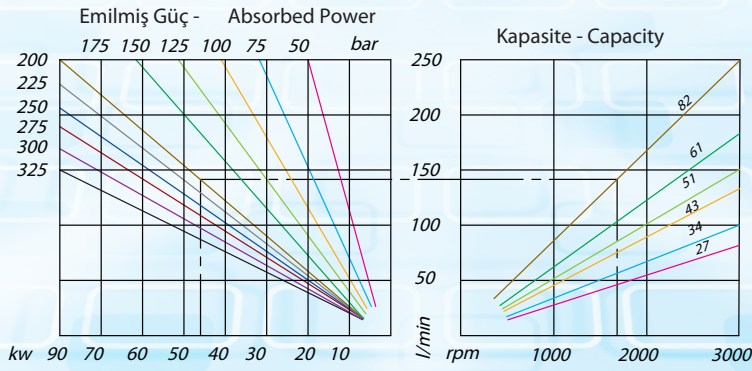
ŞAFT ÖZELLİKLERİ
SHAFT FEATURES

Giriş Basıncı Inlet Pressure	0.7 ÷ 1.5 bar
Çalışma Viskozite Seviyesi Operating Viscosity Range	-12 : 100 cSt
Sıvı Sıcaklığı °C (t) Fluid Temperature °C (t)	-10 _i +80 _j C

TAVSİYE EDİLEN FİLTRE (Geri Dönüş)
RECOMMENDED FILTER (Return Or Outlet)

Çalışma Basıncı Working Pressure	Kirlilik - Contamination NAS 1638 ISO 4406	Filtre- Filter β _x =75
≤ 200 bar	12	21/18
≥ 200 bar	11	20/17

DİYAGRAMLAR- DIAGRAMS



TİP - TYPE		27	34	43	51	61	82
Yer Değiştirme Displacement	cm ³ / cm/rev. ³	27.30	33.80	43.80	51.73	61.95	82.13
Maksimum Sürekli Çalışma Basıncı Max. Continuous Operating Pressure	bar	300	285	280	230	225	200
Max. Hız Max. Speed	min ⁻¹	2800	2600	2300	2300	1900	1700

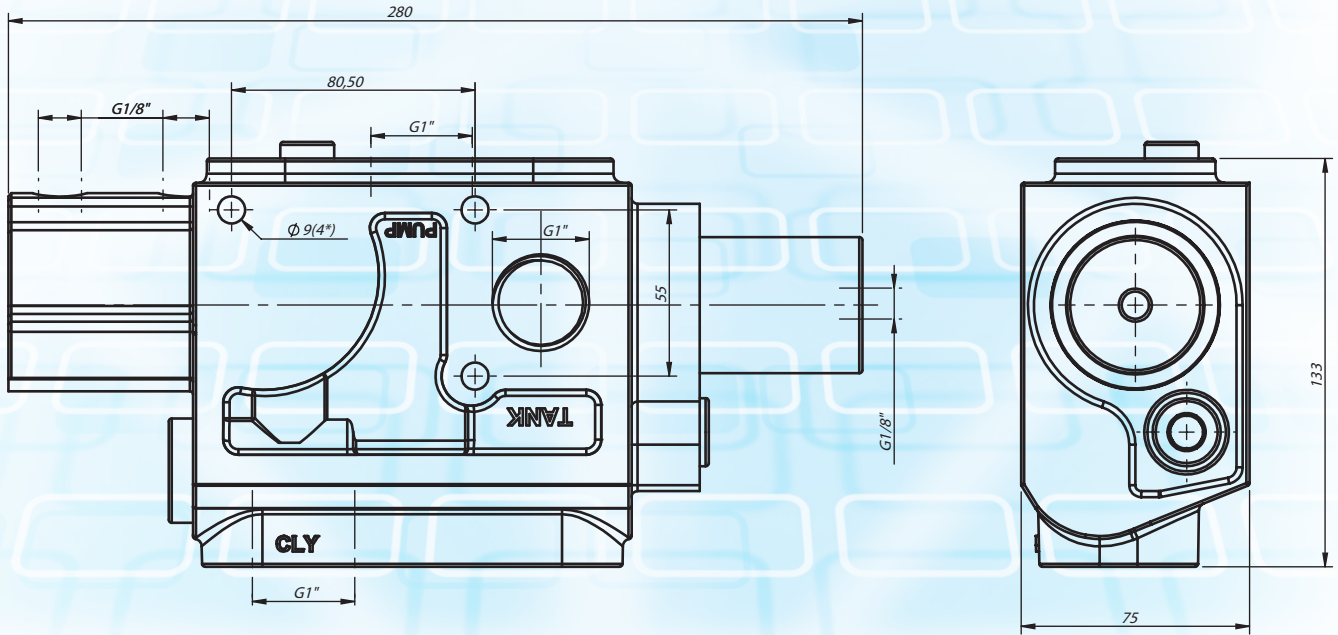
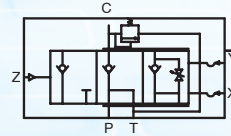
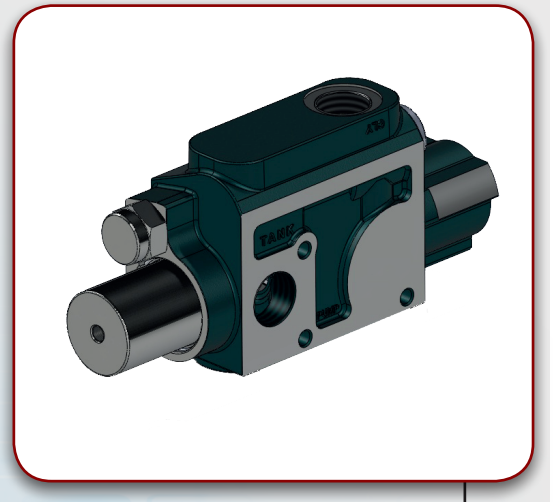
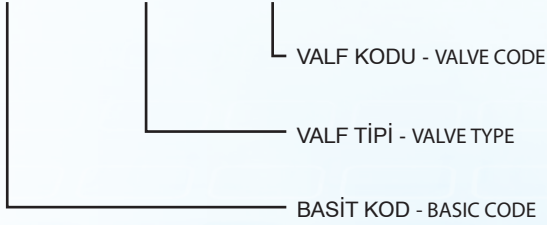


CLOSED CYCLE BIDIRECTIONAL CONTROL VALVE

VALVE SERIES

KODLAMA SİSTEMİ - CODE SYSTEMS

XXX - XXX - XX



TEKNİK DATA - TECHNICAL DATA

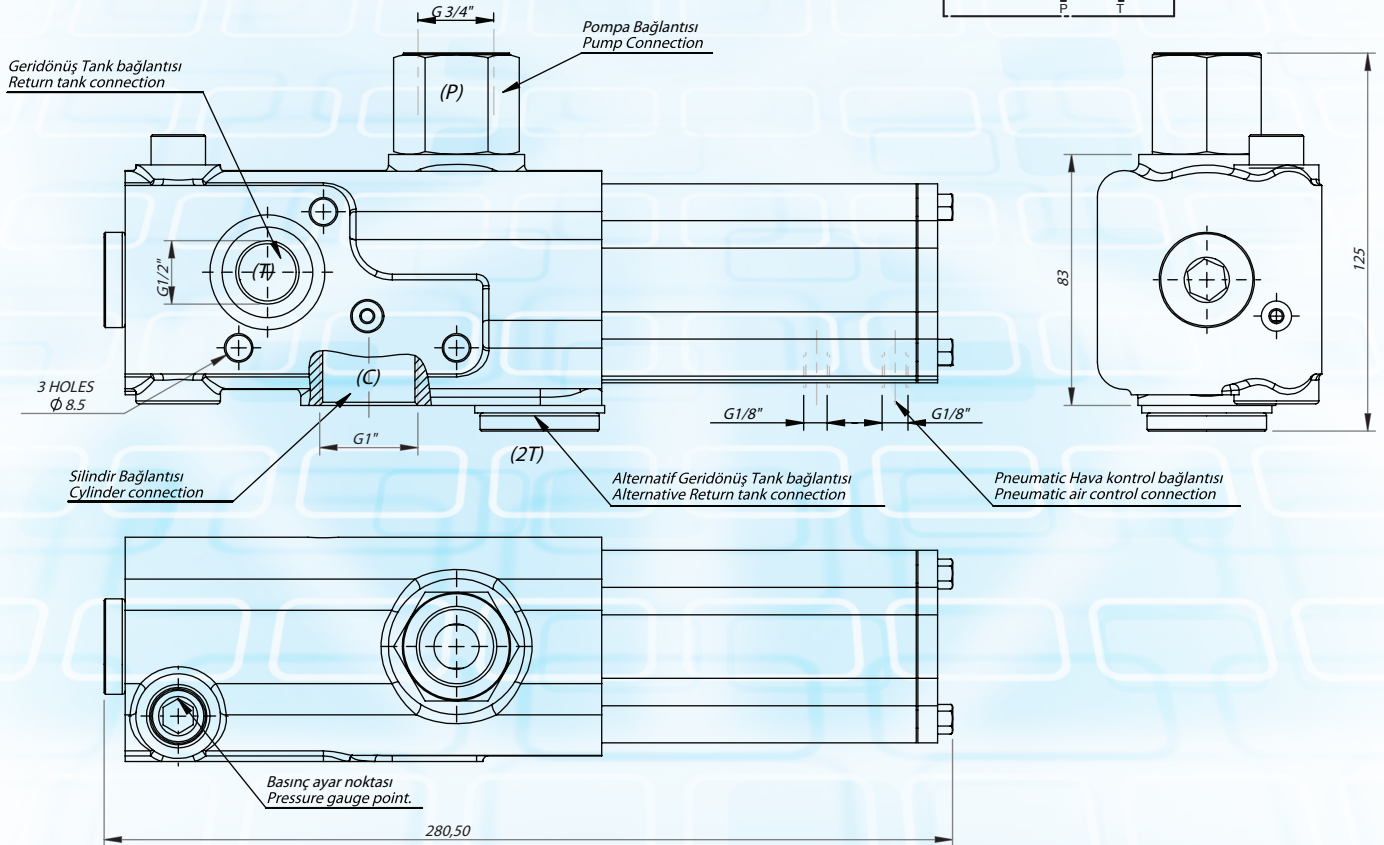
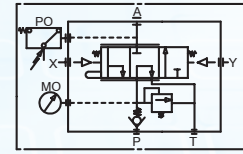
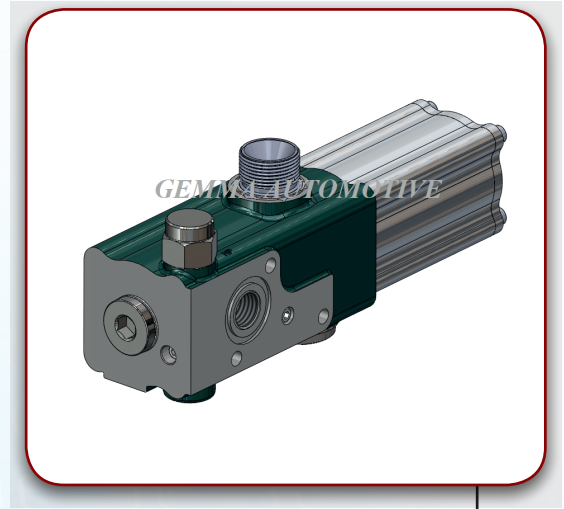
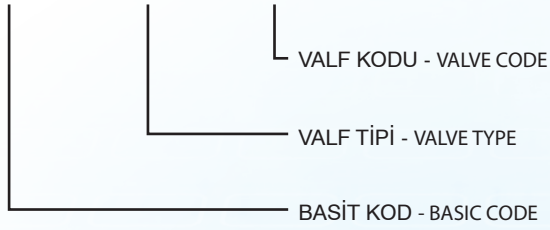
Kod/ Code	36001092	Sıvı Sıcaklığı Fluid Temperature $^{\circ}\text{C}$ (t)	-25 +80 $^{\circ}\text{C}$
Akış Oranı Flow Rate	180 l/min	Vizkosite Oranı Viscosity Range	12-100 cSt
Normal Çalışma Basıncı Normal Working Pressure	200 bar	FILTER ISO 4406 $\beta_x=75$	20/17 25 μm
Max. Çalışma Basıncı Max. Working Pressure	350 bar	Mineral Yağ Mineral Oil	ISO VG 46
Havalı Çalışma Basıncı Pneumactical Working Pressure	7-12 bar	Ağırlık Weight	9.5 kg

FIXED PRESSURE HYVA TYPE
CLOSED CYCLE BIDIRECTIONAL CONTROL VALVE

VALVE SERIES

KODLAMA SİSTEMİ - CODE SYSTEMS

XXX - XXX - XX



TEKNİK DATA - TECHNICAL DATA

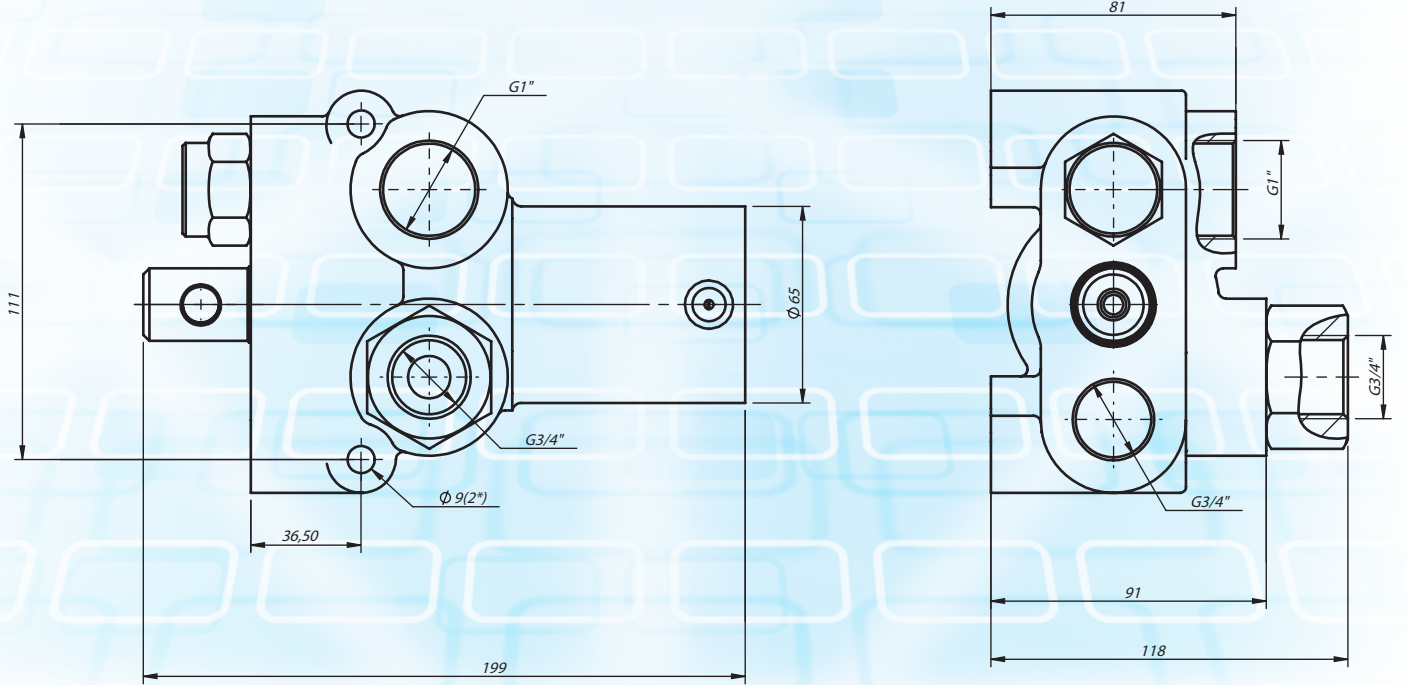
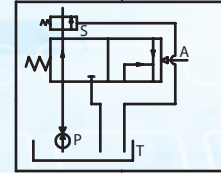
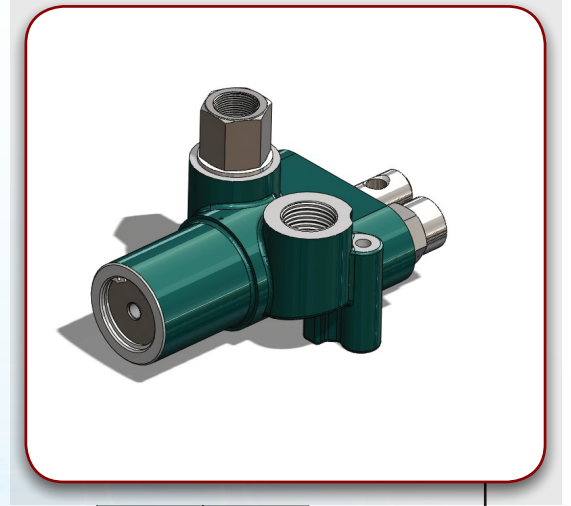
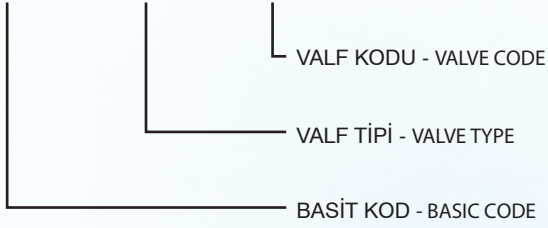
Kod/ Code	36001090	Sıvı Sıcaklığı Fluid Temperature $^{\circ}\text{C}$ (t)	-25j +80 $^{\circ}\text{C}$
Akış Oranı Flow Rate	180 l/min	Vizkosite Oranı Viscosity Range	12-100 cSt
Max. Çalışma Basıncı Max. Working Pressure	200 bar	FILTER ISO 4406 $\beta_x=75$	20/17 25 μm
Max. Zirve Basıncı Max. Peak Pressure	350 bar	Mineral Yağ Mineral Oil	DIN 51524 DIN 51525
Havalı Çalışma Basıncı Pneumatically Working Pressure	7-12 bar	Ağırlık Weight	6.4 kg

SINGLE CONTROL VALVE

VALVE SERIES

KODLAMA SİSTEMİ - CODE SYSTEMS

XXX - XXX - XX



TEKNİK DATA - TECHNICAL DATA

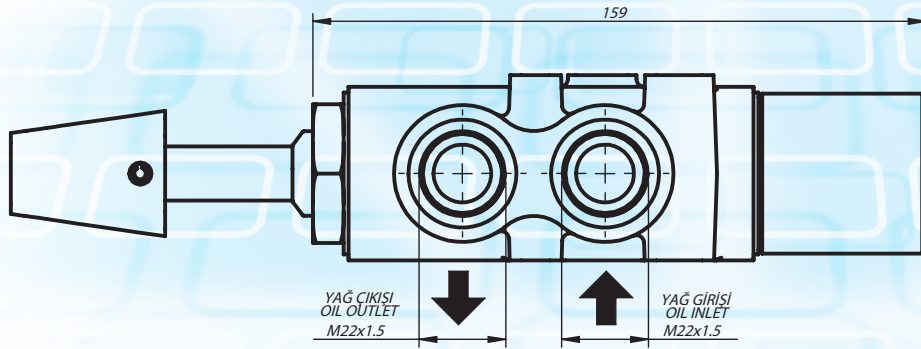
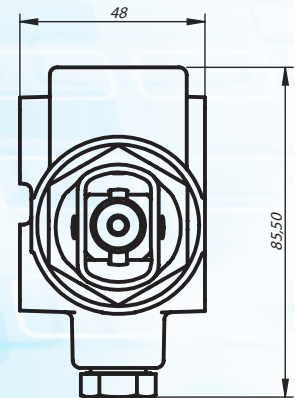
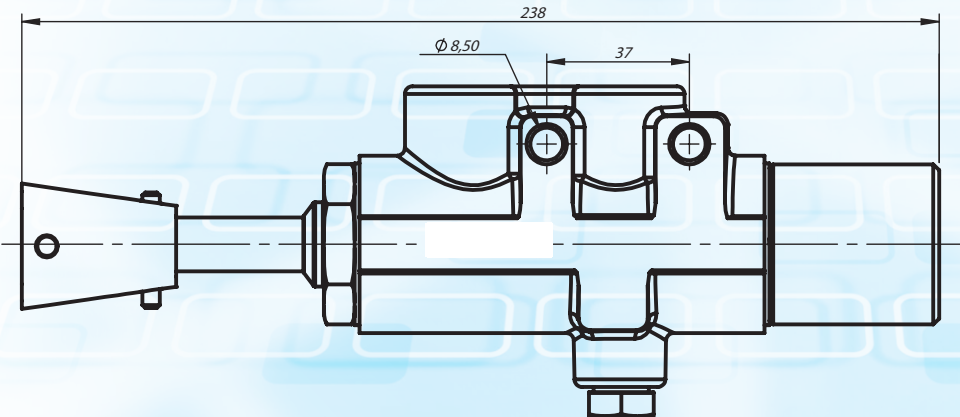
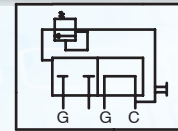
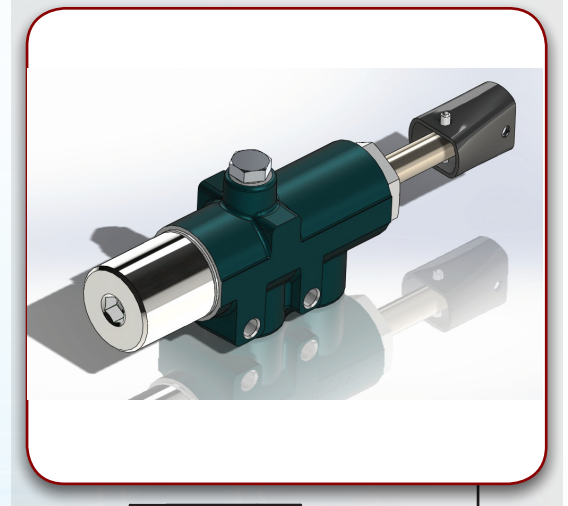
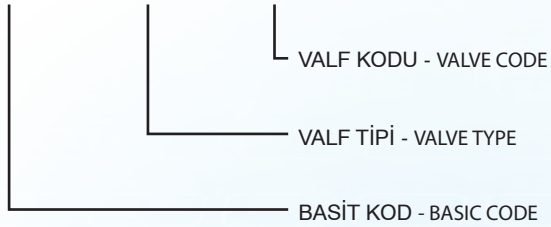
Kod/C ode	36001093	Sıvı Sıcaklığı Fluid Temperature $^{\circ}\text{C}$ (t)	-25 +80 $^{\circ}\text{C}$
Akış Oranı Flow Rate	140 l/min	Vizkosite Oranı Viscosity Range	12-100 cSt
Normal Çalışma Basıncı Normal Working Pressure	170 bar	FILTER ISO 4406 $\beta x=75$	20/17 25 μm
Max. Çalışma Basıncı Max. Working Pressure	190 bar	Mineral Yağ Mineral Oil	ISO VG 46
Havalı Çalışma Basıncı Pneumatical Working Pressure	7-12 bar	Ağırlık Weight	4.3 kg

MECHANIC VALVE

VALVE SERIES

KODLAMA SİSTEMİ - CODE SYSTEMS

XXX - XXX - XX



TEKNİK DATA - TECHNICAL DATA

Kod/ Code	36001091	Sıvı Sıcaklığı Fluid Temperature °C (t)	-25j +80 °C
Akış Oranı Flow Rate	110 l/min	Vizkosite Oranı Viscosity Range	12-100 cSt
Normal Çalışma Basıncı Normal Working Pressure	160 bar	FILTER ISO 4406 $\beta_x=75$	20/17 25 μm
Max. Çalışma Basıncı Max. Working Pressure	220 bar	Mineral Yağ Mineral Oil	ISO VG 46
Havalı Çalışma Basıncı Pneumatical Working Pressure	7-12 bar	Ağırlık Weight	2.20 kg

